

Datasheet for ABIN7151059
anti-MKRN1 antibody (AA 109-209)[Go to Product page](#)

1 Image

Overview

Quantity:	100 µg
Target:	MKRN1
Binding Specificity:	AA 109-209
Reactivity:	Human
Host:	Rabbit
Clonality:	Polyclonal
Conjugate:	This MKRN1 antibody is un-conjugated
Application:	ELISA, Immunohistochemistry (IHC)

Product Details

Immunogen:	Recombinant Human E3 ubiquitin-protein ligase makorin-1 protein (109-209AA)
Isotype:	IgG
Cross-Reactivity:	Human
Purification:	>95%, Protein G purified

Target Details

Target:	MKRN1
Alternative Name:	MKRN1 (MKRN1 Products)
Background:	Background: E3 ubiquitin ligase catalyzing the covalent attachment of ubiquitin moieties onto substrate proteins. These substrates include FILIP1, p53/TP53, CDKN1A and TERT. Keeps cells

Target Details

alive by suppressing p53/TP53 under normal conditions, but stimulates apoptosis by repressing CDKN1A under stress conditions. Acts as a negative regulator of telomerase. Has negative and positive effects on RNA polymerase II-dependent transcription.

Aliases: E3 ubiquitin-protein ligase makorin-1 antibody, FLJ21334 antibody, HGNC:7112 antibody, Makorin antibody, Makorin ring finger protein 1 antibody, MKRN 1 antibody, mkrn1 antibody, MKRN1_HUMAN antibody, OTTHUMP00000212117 antibody, OTTHUMP00000212118 antibody, OTTHUMP00000212121 antibody, OTTHUMP00000212124 antibody, Ring finger protein 1 antibody, RING finger protein 61 antibody, RNF61 antibody

UniProt: [Q9UHC7](#)

Pathways: [Chromatin Binding](#)

Application Details

Application Notes: Recommended dilution: IHC:1:500-1:1000,

Restrictions: For Research Use only

Handling

Format: Liquid

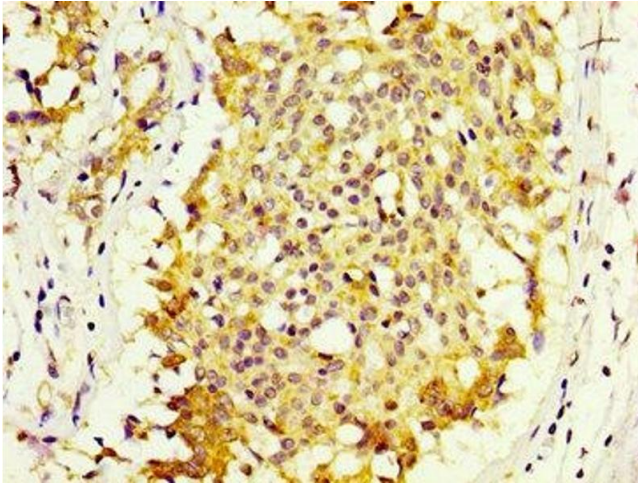
Buffer: Preservative: 0.03 % Proclin 300
Constituents: 50 % Glycerol, 0.01M PBS, pH 7.4

Preservative: ProClin

Precaution of Use: This product contains ProClin: a POISONOUS AND HAZARDOUS SUBSTANCE which should be handled by trained staff only.

Storage: -20 °C, -80 °C

Storage Comment: Upon receipt, store at -20°C or -80°C. Avoid repeated freeze.



Immunohistochemistry

Image 1. IHC image of ABIN7151059 diluted at 1:600 and staining in paraffin-embedded human breast cancer performed on a Leica Bond™ system. After dewaxing and hydration, antigen retrieval was mediated by high pressure in a citrate buffer (pH 6.0). Section was blocked with 10% normal goat serum 30min at RT. Then primary antibody (1% BSA) was incubated at 4°C overnight. The primary is detected by a biotinylated secondary antibody and visualized using an HRP conjugated SP system.