



[Go to Product page](#)

Datasheet for ABIN715106
anti-NUAK2 antibody (AA 31-130)

1 Image

Overview

Quantity:	100 µL
Target:	NUAK2
Binding Specificity:	AA 31-130
Reactivity:	Human, Mouse
Host:	Rabbit
Clonality:	Polyclonal
Conjugate:	This NUAK2 antibody is un-conjugated
Application:	Western Blotting (WB), ELISA, Immunofluorescence (Cultured Cells) (IF (cc)), Immunofluorescence (Paraffin-embedded Sections) (IF (p)), Immunohistochemistry (Paraffin-embedded Sections) (IHC (p)), Immunohistochemistry (Frozen Sections) (IHC (fro))

Product Details

Immunogen:	KLH conjugated synthetic peptide derived from human NUAK2
Isotype:	IgG
Cross-Reactivity:	Human, Mouse
Predicted Reactivity:	Rat,Dog,Cow,Rabbit
Purification:	Purified by Protein A.

Target Details

Target:	NUAK2
---------	-------

Target Details

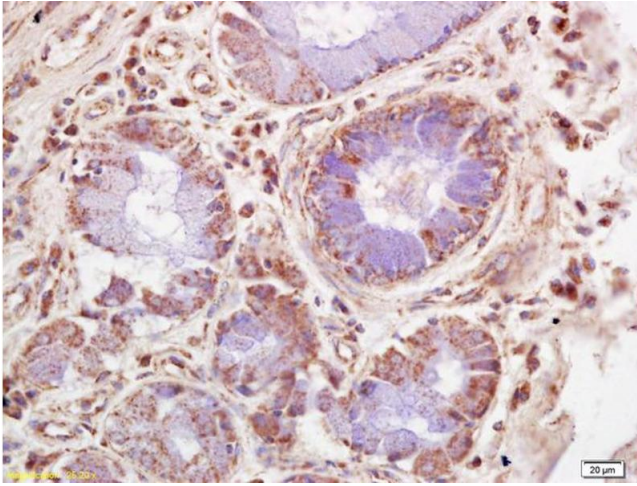
Alternative Name:	NUAK2 (NUAK2 Products)
Background:	<p>Synonyms: SNARK, NUAKE family SNF1-like kinase 2, Omphalocyte kinase 2, SNF1/AMP kinase-related kinase, NUAKE2, OMPHK2</p> <p>Background: Stress-activated kinase involved in tolerance to glucose starvation. Induces cell-cell detachment by increasing F-actin conversion to G-actin. Expression is induced by CD95 or TNF-alpha, via NF-kappa-B. Protects cells from CD95-mediated apoptosis and is required for the increased motility and invasiveness of CD95-activated tumor cells. Able to phosphorylate 'Ser-464' of LATS1.</p>
Gene ID:	81788
UniProt:	Q9H093

Application Details

Application Notes:	WB 1:300-5000 ELISA 1:500-1000 IHC-P 1:200-400 IHC-F 1:100-500 IF(IHC-P) 1:50-200 IF(IHC-F) 1:50-200 IF(ICC) 1:50-200
Restrictions:	For Research Use only

Handling

Format:	Liquid
Concentration:	1 µg/µL
Buffer:	0.01M TBS(pH 7.4) with 1 % BSA, 0.02 % Proclin300 and 50 % Glycerol.
Preservative:	ProClin
Precaution of Use:	This product contains ProClin: a POISONOUS AND HAZARDOUS SUBSTANCE, which should be handled by trained staff only.
Storage:	4 °C, -20 °C
Storage Comment:	Shipped at 4°C. Store at -20°C for one year. Avoid repeated freeze/thaw cycles.
Expiry Date:	12 months



Immunohistochemistry

Image 1. Formalin-fixed and paraffin embedded human lung carcinoma labeled with Rabbit Anti NUA2 Polyclonal Antibody, Unconjugated (ABIN715106) at 1:200 followed by conjugation to the secondary antibody and DAB staining