

Datasheet for ABIN7151111
anti-RBBP6 antibody (AA 51-97)

4 Images

[Go to Product page](#)

Overview

Quantity:	100 µg
Target:	RBBP6
Binding Specificity:	AA 51-97
Reactivity:	Human
Host:	Rabbit
Clonality:	Polyclonal
Conjugate:	This RBBP6 antibody is un-conjugated
Application:	Western Blotting (WB), ELISA, Immunofluorescence (IF), Immunohistochemistry (IHC)

Product Details

Immunogen:	Recombinant Human E3 ubiquitin-protein ligase RBBP6 protein (51-97AA)
Isotype:	IgG
Cross-Reactivity:	Human, Mouse
Purification:	>95%, Protein G purified

Target Details

Target:	RBBP6
Alternative Name:	RBBP6 (RBBP6 Products)
Background:	Background: E3 ubiquitin-protein ligase which promotes ubiquitination of YBX1, leading to its degradation by the proteasome (PubMed:18851979). May play a role as a scaffold protein to

Target Details

promote the assembly of the p53/TP53-MDM2 complex, resulting in increase of MDM2-mediated ubiquitination and degradation of p53/TP53, may function as negative regulator of p53/TP53, leading to both apoptosis and cell growth (By similarity). Regulates DNA-replication and the stability of chromosomal common fragile sites (CFSs) in a ZBTB38- and MCM10-dependent manner. Controls ZBTB38 protein stability and abundance via ubiquitination and proteasomal degradation, and ZBTB38 in turn negatively regulates the expression of MCM10 which plays an important role in DNA-replication (PubMed:24726359).

Aliases: DKFZp686P0638 antibody, DKFZp761B2423 antibody, E3 ubiquitin-protein ligase RBBP6 antibody, MY038 antibody, P2P R antibody, P2PR antibody, p53 associated cellular protein of testis antibody, p53-associated cellular protein of testis antibody, p53-associated cellular protein, testis-derived antibody, PACT antibody, Proliferation potential related protein antibody, Proliferation potential-related protein antibody, Protein P2P R antibody, Protein P2P-R antibody, Protein P2PR antibody, Protein RBQ 1 antibody, Protein RBQ1 antibody, RB binding protein 6, ubiquitin ligase antibody, RB binding Q protein 1 antibody, RBBP 6 antibody, Rbbp6 antibody, RBBP6_HUMAN antibody, RBQ 1 antibody, RBQ-1 antibody, RBQ1 antibody, Retinoblastoma binding protein 6 isoform 3 antibody, Retinoblastoma binding Q protein 1 antibody, Retinoblastoma-binding protein 6 antibody, Retinoblastoma-binding Q protein 1 antibody, SNAMA antibody, SNAMA, Drosophila, homolog of antibody

UniProt: [Q7Z6E9](#)

Pathways: [Regulatory RNA Pathways](#)

Application Details

Application Notes: Recommended dilution: WB:1:500-1:5000, IHC:1:20-1:200, IF:1:50-1:200,

Restrictions: For Research Use only

Handling

Format: Liquid

Buffer: Preservative: 0.03 % Proclin 300
Constituents: 50 % Glycerol, 0.01M PBS, pH 7.4

Preservative: ProClin

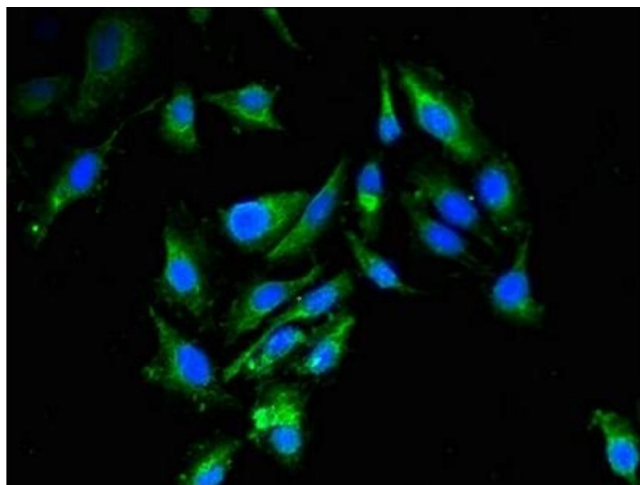
Precaution of Use: This product contains ProClin: a POISONOUS AND HAZARDOUS SUBSTANCE which should be handled by trained staff only.

Handling

Storage: -20 °C, -80 °C

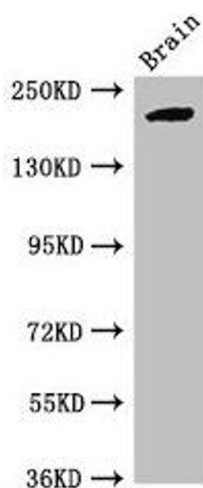
Storage Comment: Upon receipt, store at -20°C or -80°C. Avoid repeated freeze.

Images



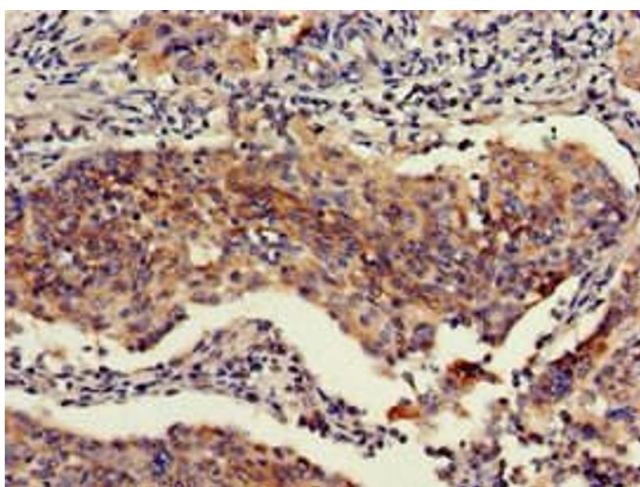
Immunofluorescence

Image 1. Immunofluorescent analysis of HeLa cells using ABIN7151111 at dilution of 1:100 and Alexa Fluor 488-conjugated AffiniPure Goat Anti-Rabbit IgG(H+L)



Western Blotting

Image 2. Western Blot Positive WB detected in: Mouse brain tissue All lanes: RBBP6 antibody at 2.7 µg/mL Secondary Goat polyclonal to rabbit IgG at 1/50000 dilution Predicted band size: 202, 198, 14, 107 kDa Observed band size: 202 kDa



Immunohistochemistry

Image 3. Immunohistochemistry of paraffin-embedded human cervical cancer using ABIN7151111 at dilution of 1:100

Please check the [product details page](#) for more images. Overall 4 images are available for ABIN7151111.