



[Go to Product page](#)

Datasheet for ABIN7151115  
**anti-RBX1 antibody (AA 1-108)**

3 Images

### Overview

Quantity:	100 µL
Target:	RBX1
Binding Specificity:	AA 1-108
Reactivity:	Human
Host:	Rabbit
Clonality:	Polyclonal
Conjugate:	This RBX1 antibody is un-conjugated
Application:	Western Blotting (WB), Immunohistochemistry (IHC), ELISA

### Product Details

Immunogen:	Recombinant Human E3 ubiquitin-protein ligase RBX1 protein (1-108AA)
Isotype:	IgG
Cross-Reactivity:	Human
Purification:	Antigen Affinity Purified

### Target Details

Target:	RBX1
Alternative Name:	RBX1 ( <a href="#">RBX1 Products</a> )
Background:	Background: E3 ubiquitin ligase component of multiple cullin-RING-based E3 ubiquitin-protein ligase complexes which mediate the ubiquitination and subsequent proteasomal degradation

## Target Details

---

of target proteins, including proteins involved in cell cycle progression, signal transduction, transcription and transcription-coupled nucleotide excision repair. The functional specificity of the E3 ubiquitin-protein ligase complexes depends on the variable substrate recognition components. As a component of the CSA complex promotes the ubiquitination of ERCC6 resulting in proteasomal degradation. Through the RING-type zinc finger, seems to recruit the E2 ubiquitination enzyme, like CDC34, to the complex and brings it into close proximity to the substrate. Probably also stimulates CDC34 autoubiquitination. May be required for histone H3 and histone H4 ubiquitination in response to ultraviolet and for subsequent DNA repair. Promotes the neddylation of CUL1, CUL2, CUL4 and CUL4 via its interaction with UBE2M. Involved in the ubiquitination of KEAP1, ENC1 and KLHL41. In concert with ATF2 and CUL3, promotes degradation of KAT5 thereby attenuating its ability to acetylate and activate ATM. Aliases: BA554C12.1 antibody, E3 ubiquitin-protein ligase RBX1 antibody, FLJ60363 antibody, MGC13357 antibody, MGC1481 antibody, OTTHUMP00000028983 antibody, Protein ZYP antibody, Rbx 1 antibody, Rbx1 antibody, RBX1\_HUMAN antibody, Regulator of cullins 1 antibody, Ring box 1 antibody, Ring box 1 E3 ubiquitin protein ligase antibody, RING box protein 1 antibody, RING finger protein 75 antibody, RING finger protein antibody, RING-box protein 1 antibody, Ringbox protein 1 antibody, RNF 75 antibody, RNF75 antibody, ROC 1 antibody, ROC1 antibody, ZYP protein antibody

---

UniProt: [P62877](#)

---

Pathways: [Cell Division Cycle](#), [M Phase](#), [SARS-CoV-2 Protein Interactome](#)

## Application Details

---

Application Notes: Recommended dilution: WB:1:500-1:2000, IHC:1:20-1:200,

---

Restrictions: For Research Use only

## Handling

---

Format: Liquid

---

Buffer: PBS with 0.02 % sodium azide, 50 % glycerol, pH 7.3.

---

Preservative: Sodium azide

---

Precaution of Use: This product contains Sodium azide: a POISONOUS AND HAZARDOUS SUBSTANCE which should be handled by trained staff only.

---

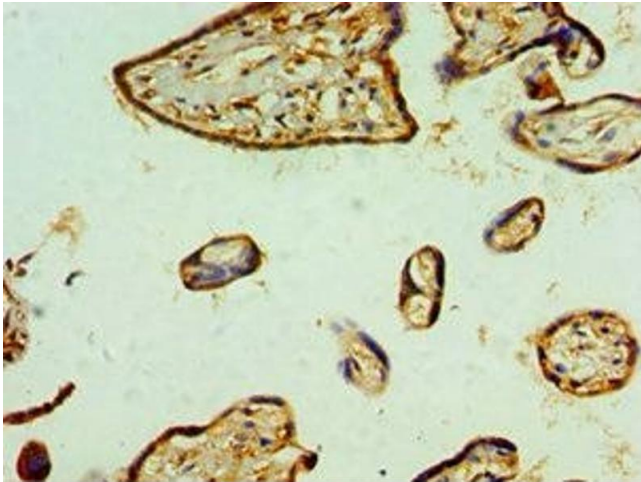
Storage: -20 °C,-80 °C

---

## Handling

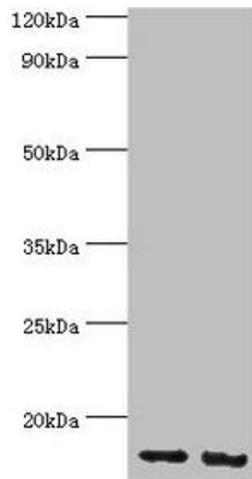
Storage Comment: Upon receipt, store at -20°C or -80°C. Avoid repeated freeze.

## Images



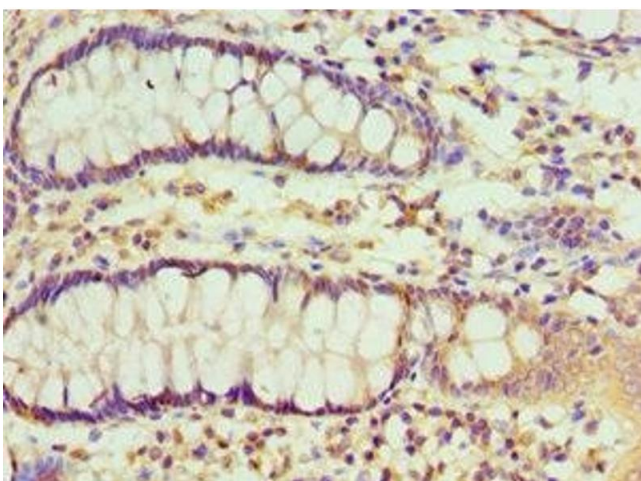
### Immunohistochemistry

**Image 1.** Immunohistochemistry of paraffin-embedded human placenta tissue using ABIN7151115 at dilution of 1:100



### Western Blotting

**Image 2.** Western blot All lanes: E3 ubiquitin-protein ligase RBX1 antibody at 4 µg/mL Lane 1: Hela whole cell lysate Lane 2: HepG2 whole cell lysate Secondary Goat polyclonal to rabbit IgG at 1/10000 dilution Predicted band size: 12 kDa Observed band size: 12 kDa



### Immunohistochemistry

**Image 3.** Immunohistochemistry of paraffin-embedded human colon tissue using ABIN7151115 at dilution of 1:100