

Datasheet for ABIN7151148  
**anti-RNF135 antibody (AA 339-432)**



[Go to Product page](#)

3 Images

### Overview

Quantity:	100 µL
Target:	RNF135
Binding Specificity:	AA 339-432
Reactivity:	Human
Host:	Rabbit
Clonality:	Polyclonal
Conjugate:	This RNF135 antibody is un-conjugated
Application:	Western Blotting (WB), ELISA, Immunohistochemistry (IHC)

### Product Details

Immunogen:	Recombinant Human E3 ubiquitin-protein ligase RNF135 protein (339-432AA)
Isotype:	IgG
Cross-Reactivity:	Human
Purification:	Antigen Affinity Purified

### Target Details

Target:	RNF135
Alternative Name:	RNF135 ( <a href="#">RNF135 Products</a> )
Background:	Background: Acts as an E2-dependent E3 ubiquitin-protein ligase, involved in innate immune defense against viruses. Ubiquitinates DDX58 and is required for full activation of the DDX58

## Target Details

signaling resulting in interferon beta production.

Aliases: E3 ubiquitin-protein ligase RNF135 antibody, L13 antibody, MGC13061 antibody, MMFD antibody, REUL antibody, RIG-I E3 ubiquitin ligase antibody, RING finger protein 135 antibody, Riplet antibody, RN135\_HUMAN antibody, Rnf135 antibody

UniProt: [Q8IUD6](#)

## Application Details

Application Notes: Recommended dilution: WB:1:1000-1:5000, IHC:1:20-1:200,

Restrictions: For Research Use only

## Handling

Format: Liquid

Buffer: PBS with 0.02 % sodium azide, 50 % glycerol, pH 7.3.

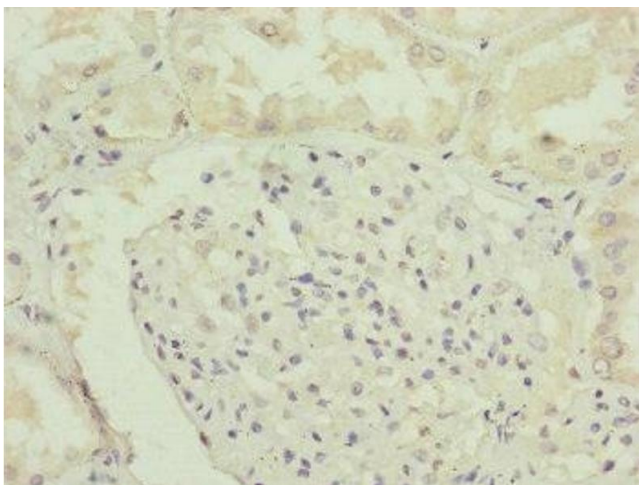
Preservative: Sodium azide

Precaution of Use: This product contains Sodium azide: a POISONOUS AND HAZARDOUS SUBSTANCE which should be handled by trained staff only.

Storage: -20 °C,-80 °C

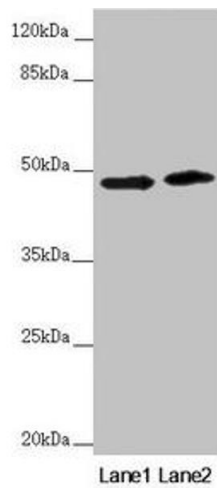
Storage Comment: Upon receipt, store at -20°C or -80°C. Avoid repeated freeze.

## Images



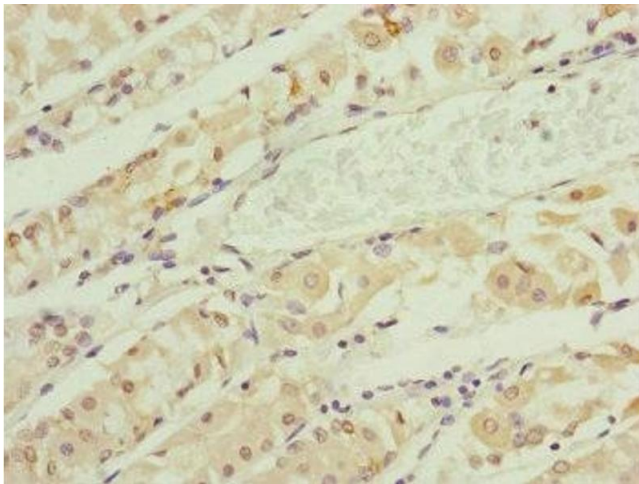
### Immunohistochemistry

**Image 1.** Immunohistochemistry of paraffin-embedded human kidney tissue using ABIN7151148 at dilution of 1:100



### Western Blotting

**Image 2.** Western blot All lanes: RNF135 antibody at 3.51  $\mu$ g/mL Lane 1: 293T whole cell lysate Lane 2: Jurkat whole cell lysate Secondary Goat polyclonal to rabbit IgG at 1/10000 dilution Predicted band size: 48, 23, 31 kDa Observed band size: 48 kDa



### Immunohistochemistry

**Image 3.** Immunohistochemistry of paraffin-embedded human gastric cancer using ABIN7151148 at dilution of 1:100