



[Go to Product page](#)

Datasheet for ABIN7151154  
**anti-RNF139 antibody (AA 510-664)**

2 Images

Overview

Quantity:	100 µL
Target:	RNF139
Binding Specificity:	AA 510-664
Reactivity:	Human
Host:	Rabbit
Clonality:	Polyclonal
Conjugate:	This RNF139 antibody is un-conjugated
Application:	ELISA, Immunohistochemistry (IHC)

Product Details

Immunogen:	Recombinant Human E3 ubiquitin-protein ligase RNF139 protein (510-664AA)
Isotype:	IgG
Cross-Reactivity:	Human
Purification:	Antigen Affinity Purified

Target Details

Target:	RNF139
Alternative Name:	RNF139 ( <a href="#">RNF139 Products</a> )
Background:	Background: E3-ubiquitin ligase, acts as a negative regulator of the cell proliferation through mechanisms involving G2/M arrest and cell death. Required for MHC class I ubiquitination in

## Target Details

---

cells expressing the cytomegalovirus protein US2 before dislocation from the endoplasmic reticulum (ER). Affects SREBP processing by hindering the SREBP/SCAP complex translocation from the ER to the Golgi, thereby reducing SREBF2 target gene expression. Required for INSIG1 ubiquitination. May be required for EIF3 complex ubiquitination. May function as a signaling receptor.

Aliases: RNF139 antibody, TRC8 antibody, E3 ubiquitin-protein ligase RNF139 antibody, EC 2.3.2.27 antibody, RING finger protein 139 antibody, RING-type E3 ubiquitin transferase RNF139 antibody, Translocation in renal carcinoma on chromosome 8 protein antibody

UniProt: [Q8WU17](#)

## Application Details

---

Application Notes: Recommended dilution: IHC:1:20-1:200,

Restrictions: For Research Use only

## Handling

---

Format: Liquid

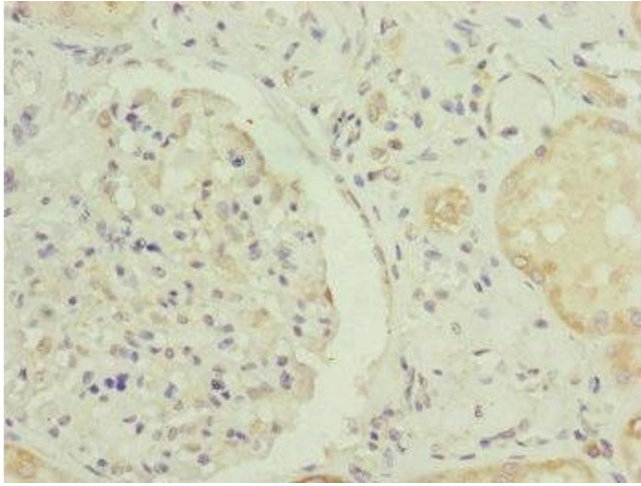
Buffer: PBS with 0.02 % sodium azide, 50 % glycerol, pH 7.3.

Preservative: Sodium azide

Precaution of Use: This product contains Sodium azide: a POISONOUS AND HAZARDOUS SUBSTANCE which should be handled by trained staff only.

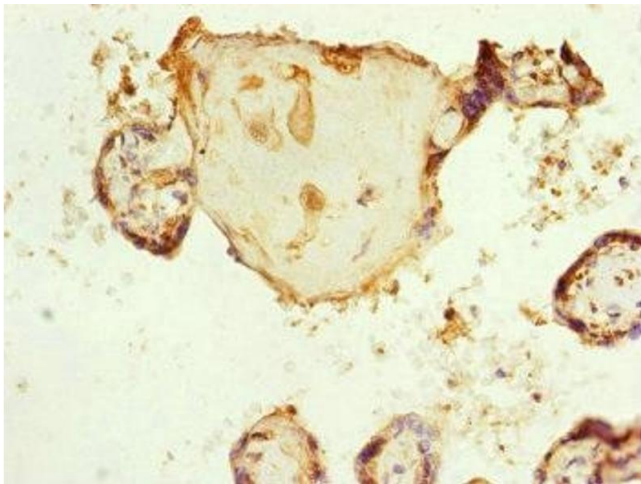
Storage: -20 °C,-80 °C

Storage Comment: Upon receipt, store at -20°C or -80°C. Avoid repeated freeze.



#### Immunohistochemistry

**Image 1.** Immunohistochemistry of paraffin-embedded human kidney tissue using ABIN7151154 at dilution of 1:100



#### Immunohistochemistry

**Image 2.** Immunohistochemistry of paraffin-embedded human placenta tissue using ABIN7151154 at dilution of 1:100