



[Go to Product page](#)

Datasheet for ABIN7151188
anti-RNF31 antibody (AA 421-700)

2 Images

Overview

Quantity:	100 µg
Target:	RNF31
Binding Specificity:	AA 421-700
Reactivity:	Human
Host:	Rabbit
Clonality:	Polyclonal
Conjugate:	This RNF31 antibody is un-conjugated
Application:	ELISA, Immunofluorescence (IF), Immunohistochemistry (IHC)

Product Details

Immunogen:	Recombinant Human E3 ubiquitin-protein ligase RNF31 protein (421-700AA)
Isotype:	IgG
Cross-Reactivity:	Human
Purification:	>95%, Protein G purified

Target Details

Target:	RNF31
Alternative Name:	RNF31 (RNF31 Products)
Background:	Background: E3 ubiquitin-protein ligase component of the LUBAC complex which conjugates linear (Met-1-linked) polyubiquitin chains to substrates and plays a key role in NF-kappa-B

Target Details

activation and regulation of inflammation. LUBAC conjugates linear polyubiquitin to IKBKG and RIPK1 and is involved in activation of the canonical NF-kappa-B and the JNK signaling pathways. Linear ubiquitination mediated by the LUBAC complex interferes with TNF-induced cell death and thereby prevents inflammation. LUBAC is proposed to be recruited to the TNF-R1 signaling complex (TNF-RSC) following polyubiquitination of TNF-RSC components by BIRC2 and/or BIRC3 and to conjugate linear polyubiquitin to IKBKG and possibly other components contributing to the stability of the complex. Together with FAM105B/otulin, the LUBAC complex regulates the canonical Wnt signaling during angiogenesis. Binds polyubiquitin of different linkage types.

Aliases: E3 ubiquitin protein ligase RNF31 antibody, FLJ10111 antibody, FLJ23501 antibody, HOIL 1L interacting protein antibody, HOIL-1-interacting protein antibody, HOIL1L interacting protein antibody, HOIP antibody, RING finger protein 31 antibody, RNF31 antibody, RNF31_HUMAN antibody, ZIBRA antibody, Zinc in between ring finger ubiquitin associated domain antibody, Zinc in-between-RING-finger ubiquitin-associated domain protein antibody

UniProt: [Q96EPO](#)

Application Details

Application Notes: Recommended dilution: IHC:1:20-1:200, IF:1:50-1:200,

Restrictions: For Research Use only

Handling

Format: Liquid

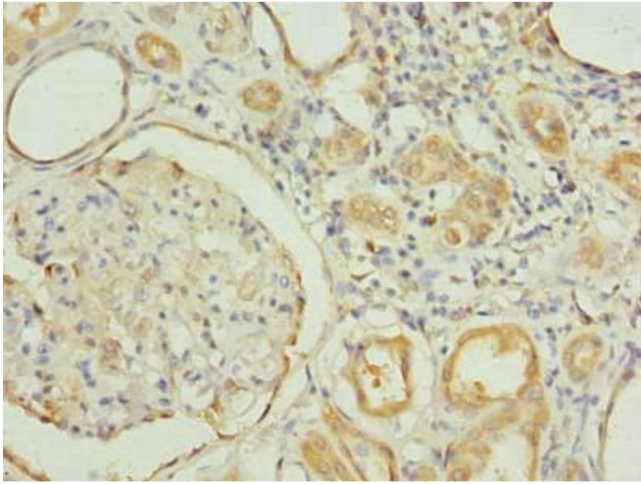
Buffer: Preservative: 0.03 % Proclin 300
Constituents: 50 % Glycerol, 0.01M PBS, PH 7.4

Preservative: ProClin

Precaution of Use: This product contains ProClin: a POISONOUS AND HAZARDOUS SUBSTANCE which should be handled by trained staff only.

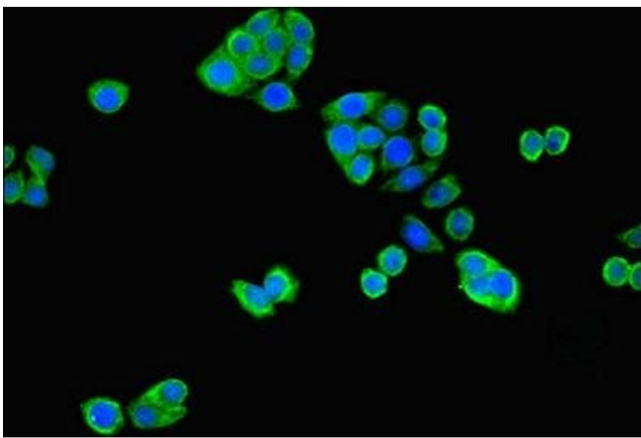
Storage: -20 °C,-80 °C

Storage Comment: Upon receipt, store at -20°C or -80°C. Avoid repeated freeze.



Immunohistochemistry

Image 1. Immunohistochemistry of paraffin-embedded human kidney tissue using ABIN7151188 at dilution of 1:100



Immunofluorescence

Image 2. Immunofluorescent analysis of PC-3 cells using ABIN7151188 at dilution of 1:100 and Alexa Fluor 488-conjugated AffiniPure Goat Anti-Rabbit IgG(H+L)