

Datasheet for ABIN7151209  
**anti-SH3RF1 antibody (AA 628-742)**[Go to Product page](#)

## 1 Image

## Overview

Quantity:	100 µg
Target:	SH3RF1
Binding Specificity:	AA 628-742
Reactivity:	Human
Host:	Rabbit
Clonality:	Polyclonal
Conjugate:	This SH3RF1 antibody is un-conjugated
Application:	ELISA, Immunofluorescence (IF)

## Product Details

Immunogen:	Recombinant Human E3 ubiquitin-protein ligase SH3RF1 protein (628-742AA)
Isotype:	IgG
Cross-Reactivity:	Human
Purification:	>95%, Protein G purified

## Target Details

Target:	SH3RF1
Alternative Name:	SH3RF1 ( <a href="#">SH3RF1 Products</a> )
Background:	Background: Acts as a scaffold protein, contributes to Rac-induced signal transduction such as JNKs (MAPK8 and MAPK9) activation and induces apoptosis. Within a signaling complex, it

## Target Details

probably recruits protein kinases such as MAP3K10 or MAP3K11 which are in turn activated leading to the sequential activation of MAP2K4, MAP2K7 and JNKs (MAPK8 and MAPK9) (By similarity). May be involved in targeting of HIV-1 GAG and GAG-POL polyproteins to the plasma membrane.

Aliases: SH3RF1 antibody, KIAA1494 antibody, POSH antibody, POSH1 antibody, RNF142 antibody, SH3MD2 antibody, E3 ubiquitin-protein ligase SH3RF1 antibody, EC 2.3.2.27 antibody, Plenty of SH3s antibody, Protein POSH antibody, RING finger protein 142 antibody, RING-type E3 ubiquitin transferase SH3RF1 antibody, SH3 domain-containing RING finger protein 1 antibody, SH3 multiple domains protein 2 antibody

UniProt: [Q7Z6J0](#)

## Application Details

Application Notes: Recommended dilution: IF:1:200-1:500,

Restrictions: For Research Use only

## Handling

Format: Liquid

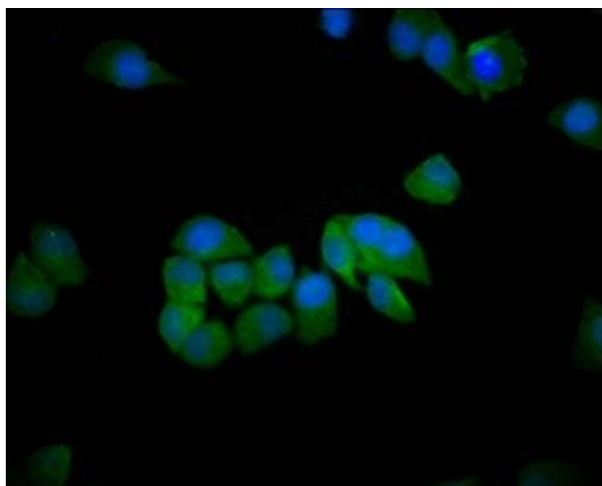
Buffer: Preservative: 0.03 % Proclin 300  
Constituents: 50 % Glycerol, 0.01M PBS, pH 7.4

Preservative: ProClin

Precaution of Use: This product contains ProClin: a POISONOUS AND HAZARDOUS SUBSTANCE which should be handled by trained staff only.

Storage: -20 °C,-80 °C

Storage Comment: Upon receipt, store at -20°C or -80°C. Avoid repeated freeze.



#### Immunofluorescence

**Image 1.** Immunofluorescence staining of HeLa cells with ABIN7151209 at 1:200, counter-stained with DAPI. The cells were fixed in 4% formaldehyde, permeabilized using 0.2% Triton X-100 and blocked in 10% normal Goat Serum. The cells were then incubated with the antibody overnight at 4°C. The secondary antibody was Alexa Fluor 488-conjugated AffiniPure Goat Anti-Rabbit IgG(H+L).