

Datasheet for ABIN7151248
anti-TRIM21 antibody (AA 1-475)



[Go to Product page](#)

2 Images

Overview

Quantity:	100 µg
Target:	TRIM21
Binding Specificity:	AA 1-475
Reactivity:	Human
Host:	Rabbit
Clonality:	Polyclonal
Conjugate:	This TRIM21 antibody is un-conjugated
Application:	Western Blotting (WB), ELISA, Immunohistochemistry (IHC)

Product Details

Immunogen:	Recombinant Human E3 ubiquitin-protein ligase TRIM21 protein (1-475AA)
Isotype:	IgG
Cross-Reactivity:	Human
Purification:	>95%, Protein G purified

Target Details

Target:	TRIM21
Alternative Name:	TRIM21 (TRIM21 Products)
Background:	Background: E3 ubiquitin-protein ligase whose activity is dependent on E2 enzymes, UBE2D1, UBE2D2, UBE2E1 and UBE2E2. Forms a ubiquitin ligase complex in cooperation with the E2

Target Details

UBE2D2 that is used not only for the ubiquitination of USP4 and IKBKB but also for its self-ubiquitination. Component of cullin-RING-based SCF (SKP1-CUL1-F-box protein) E3 ubiquitin-protein ligase complexes such as SCF(SKP2)-like complexes. A TRIM21-containing SCF(SKP2)-like complex is shown to mediate ubiquitination of CDKN1B (\\'Thr-187\\' phosphorylated-form), thereby promoting its degradation by the proteasome. Monoubiquitinates IKBKB that will negatively regulates Tax-induced NF-kappa-B signaling. Negatively regulates IFN-beta production post-pathogen recognition by polyubiquitin-mediated degradation of IRF3. Mediates the ubiquitin-mediated proteasomal degradation of IgG1 heavy chain, which is linked to the VCP-mediated ER-associated degradation (ERAD) pathway. Promotes IRF8 ubiquitination, which enhanced the ability of IRF8 to stimulate cytokine genes transcription in macrophages. Plays a role in the regulation of the cell cycle progression. Enhances the decapping activity of DCP2. Exists as a ribonucleoprotein particle present in all mammalian cells studied and composed of a single polypeptide and one of four small RNA molecules. At least two isoforms are present in nucleated and red blood cells, and tissue specific differences in RO/SSA proteins have been identified. The common feature of these proteins is their ability to bind HY RNAs.2. Involved in the regulation of innate immunity and the inflammatory response in response to IFNG/IFN-gamma. Organizes autophagic machinery by serving as a platform for the assembly of ULK1, Beclin 1/BECN1 and ATG8 family members and recognizes specific autophagy targets, thus coordinating target recognition with assembly of the autophagic apparatus and initiation of autophagy. Acts as an autophagy receptor for the degradation of IRF3, hence attenuating type I interferon (IFN)-dependent immune responses (PubMed:26347139). Aliases: 52 kDa ribonucleoprotein autoantigen Ro/SS-A antibody, 52 kDa Ro protein antibody, 52kD Ro/SSA autoantigen antibody, Autoantigen Ro/SSA, 52-KD antibody, E3 ubiquitin-protein ligase TRIM21 antibody, RING finger protein 81 antibody, RNF81 antibody, Ro 52 antibody, Ro(SS-A) antibody, Ro52 antibody, R052_HUMAN antibody, Sicca syndrome antigen A antibody, Sjogren syndrome type A antigen antibody, Sjogren syndrome antigen A1 antibody, Sjogren syndrome type A antigen antibody, SS-A antibody, SSA antibody, SSA1: Sjogren syndrome antigen A1 (52 kDa ribonucleoprotein autoantigen SS-A/Ro) antibody, TRIM21 antibody, Tripartite motif protein TRIM21 antibody, Tripartite motif-containing 21 antibody, Tripartite motif-containing protein 21 antibody

UniProt: [P19474](#)

Application Details

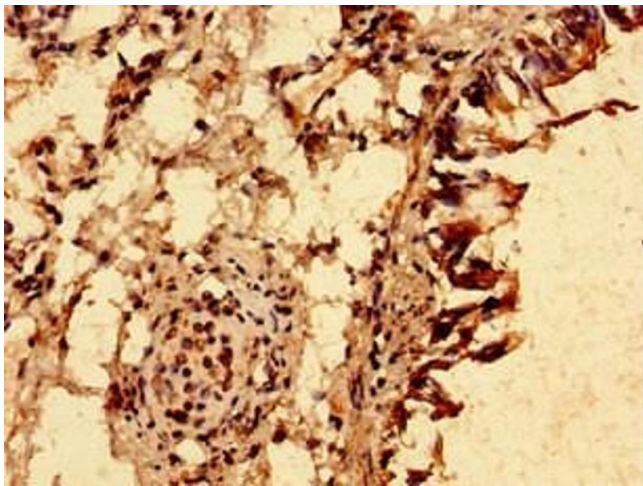
Application Notes: Recommended dilution: WB:1:500-1:5000, IHC:1:20-1:200,

Restrictions: For Research Use only

Handling

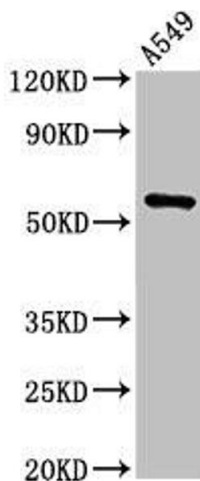
Format:	Liquid
Buffer:	Preservative: 0.03 % Proclin 300 Constituents: 50 % Glycerol, 0.01M PBS, pH 7.4
Preservative:	ProClin
Precaution of Use:	This product contains ProClin: a POISONOUS AND HAZARDOUS SUBSTANCE which should be handled by trained staff only.
Storage:	-20 °C,-80 °C
Storage Comment:	Upon receipt, store at -20°C or -80°C. Avoid repeated freeze.

Images



Immunohistochemistry

Image 1. Immunohistochemistry of paraffin-embedded human lung tissue using ABIN7151248 at dilution of 1:100



Western Blotting

Image 2. Western Blot Positive WB detected in: A549 whole cell lysate All lanes: TRIM21 antibody at 2 µg/mL Secondary Goat polyclonal to rabbit IgG at 1/50000 dilution Predicted band size: 55, 46 kDa Observed band size: 55 kDa