

Datasheet for ABIN7151293
anti-UBR1 antibody (AA 722-862)[Go to Product page](#)

2 Images

Overview

Quantity:	100 µg
Target:	UBR1
Binding Specificity:	AA 722-862
Reactivity:	Human
Host:	Rabbit
Clonality:	Polyclonal
Conjugate:	This UBR1 antibody is un-conjugated
Application:	ELISA, Immunohistochemistry (IHC), Immunofluorescence (IF)

Product Details

Immunogen:	Recombinant Human E3 ubiquitin-protein ligase UBR1 protein (722-862AA)
Isotype:	IgG
Cross-Reactivity:	Human
Purification:	>95%, Protein G purified

Target Details

Target:	UBR1
Alternative Name:	UBR1 (UBR1 Products)
Background:	Background: E3 ubiquitin-protein ligase which is a component of the N-end rule pathway. Recognizes and binds to proteins bearing specific N-terminal residues that are destabilizing

Target Details

according to the N-end rule, leading to their ubiquitination and subsequent degradation. May be involved in pancreatic homeostasis. Binds leucine and is a negative regulator of the leucine-mTOR signaling pathway, thereby controlling cell growth.

Aliases: E3 ubiquitin-protein ligase UBR1 antibody, JBS antibody, N-recognin-1 antibody, ubiquitin protein ligase E3 component n-recognin 1 antibody, Ubiquitin-protein ligase E3-alpha-1 antibody, Ubiquitin-protein ligase E3-alpha-I antibody, UBR1 antibody, UBR1_HUMAN antibody

UniProt: [Q8I WV7](#)

Application Details

Application Notes: Recommended dilution: IHC:1:500-1:1000, IF:1:50-1:200,

Restrictions: For Research Use only

Handling

Format: Liquid

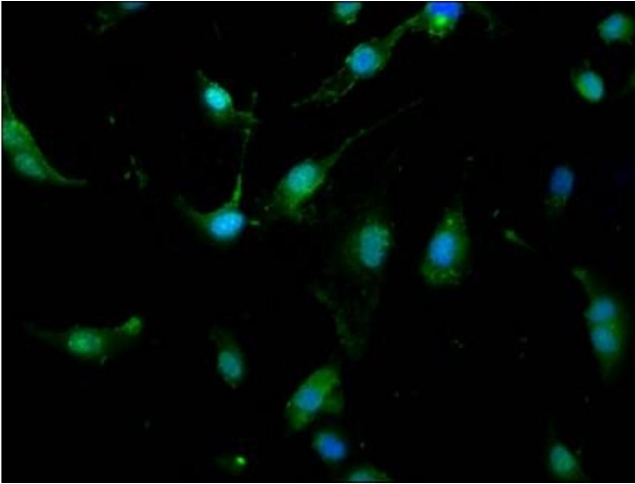
Buffer: Preservative: 0.03 % Proclin 300
Constituents: 50 % Glycerol, 0.01M PBS, pH 7.4

Preservative: ProClin

Precaution of Use: This product contains ProClin: a POISONOUS AND HAZARDOUS SUBSTANCE which should be handled by trained staff only.

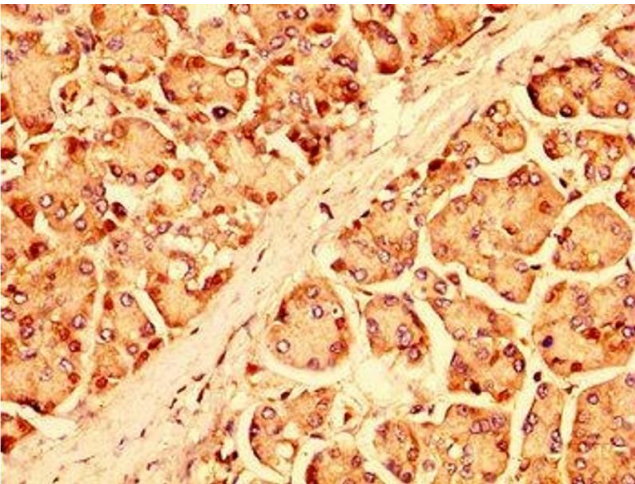
Storage: -20 °C, -80 °C

Storage Comment: Upon receipt, store at -20°C or -80°C. Avoid repeated freeze.



Immunofluorescence

Image 1. Immunofluorescence staining of U251 cells with ABIN7151293 at 1:166, counter-stained with DAPI. The cells were fixed in 4% formaldehyde, permeabilized using 0.2% Triton X-100 and blocked in 10% normal Goat Serum. The cells were then incubated with the antibody overnight at 4°C. The secondary antibody was Alexa Fluor 488-conjugated AffiniPure Goat Anti-Rabbit IgG(H+L).



Immunohistochemistry

Image 2. IHC image of ABIN7151293 diluted at 1:500 and staining in paraffin-embedded human pancreatic tissue performed on a Leica Bond™ system. After dewaxing and hydration, antigen retrieval was mediated by high pressure in a citrate buffer (pH 6.0). Section was blocked with 10% normal goat serum 30min at RT. Then primary antibody (1% BSA) was incubated at 4°C overnight. The primary is detected by a biotinylated secondary antibody and visualized using an HRP conjugated SP system.