



[Go to Product page](#)

Datasheet for ABIN7151305
anti-TIMMDC1 antibody (AA 444-585)

2 Images

Overview

Quantity:	100 µg
Target:	TIMMDC1
Binding Specificity:	AA 444-585
Reactivity:	Human
Host:	Rabbit
Clonality:	Polyclonal
Conjugate:	This TIMMDC1 antibody is un-conjugated
Application:	ELISA, Western Blotting (WB), Immunohistochemistry (IHC)

Product Details

Immunogen:	Recombinant Human E3 ubiquitin-protein ligase UHRF2 protein (444-585AA)
Isotype:	IgG
Cross-Reactivity:	Human, Mouse
Purification:	>95%, Protein G purified

Target Details

Target:	TIMMDC1
Alternative Name:	TIMMDC1 (TIMMDC1 Products)
Background:	Background: Chaperone protein involved in the assembly of the mitochondrial NADH: ubiquinone oxidoreductase complex (complex I). Participates in constructing the membrane

Target Details

arm of complex I.

Aliases: C3orf1 antibody, M5 14 protein antibody, Protein M5-14 antibody, TIDC1_HUMAN antibody, TIMMDC 1 antibody, timmdc1 antibody, Translocase of inner mitochondrial membrane domain containing 1 antibody, Translocase of inner mitochondrial membrane domain containing protein 1 antibody, Translocase of inner mitochondrial membrane domain-containing protein 1 antibody, Transmembrane protein C3orf1 antibody

UniProt: [Q9NPL8](#)

Application Details

Application Notes: Recommended dilution: WB:1:500-1:5000, IHC:1:20-1:200,

Restrictions: For Research Use only

Handling

Format: Liquid

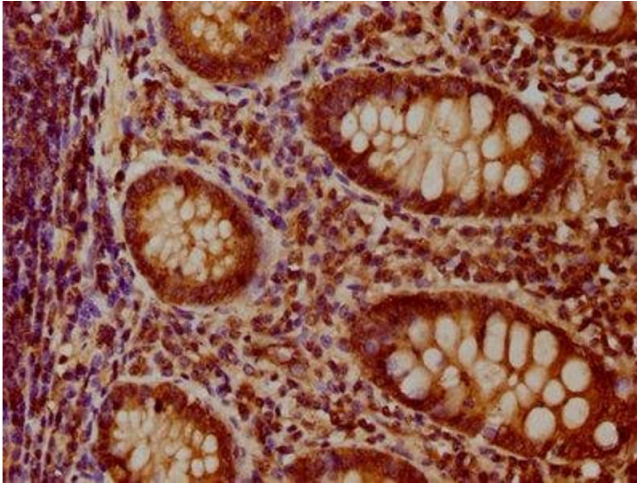
Buffer: Preservative: 0.03 % Proclin 300
Constituents: 50 % Glycerol, 0.01M PBS, pH 7.4

Preservative: ProClin

Precaution of Use: This product contains ProClin: a POISONOUS AND HAZARDOUS SUBSTANCE which should be handled by trained staff only.

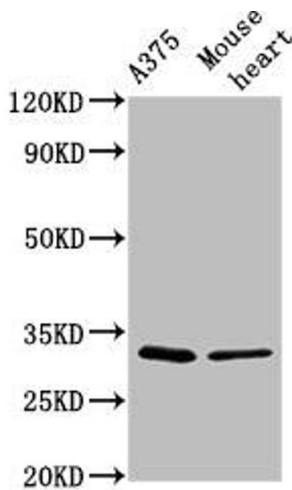
Storage: -20 °C,-80 °C

Storage Comment: Upon receipt, store at -20°C or -80°C. Avoid repeated freeze.



Immunohistochemistry

Image 1. IHC image of ABIN7151305 diluted at 1:100 and staining in paraffin-embedded human appendix tissue performed on a Leica Bond™ system. After dewaxing and hydration, antigen retrieval was mediated by high pressure in a citrate buffer (pH 6.0). Section was blocked with 10% normal goat serum 30min at RT. Then primary antibody (1% BSA) was incubated at 4°C overnight. The primary is detected by a biotinylated secondary antibody and visualized using an HRP conjugated SP system.



Western Blotting

Image 2. Western Blot Positive WB detected in: A375 whole cell lysate, Mouse heart tissue All lanes: TIMMDC1 antibody at 2.9 µg/mL Secondary Goat polyclonal to rabbit IgG at 1/50000 dilution Predicted band size: 33 kDa Observed band size: 33 kDa