

Datasheet for ABIN715136
anti-PRODH antibody (AA 141-240)[Go to Product page](#)

2 Images

Overview

Quantity:	100 µL
Target:	PRODH
Binding Specificity:	AA 141-240
Reactivity:	Mouse, Rat
Host:	Rabbit
Clonality:	Polyclonal
Conjugate:	This PRODH antibody is un-conjugated
Application:	Western Blotting (WB), ELISA, Immunofluorescence (Cultured Cells) (IF (cc)), Immunofluorescence (Paraffin-embedded Sections) (IF (p)), Immunohistochemistry (Paraffin-embedded Sections) (IHC (p)), Immunohistochemistry (Frozen Sections) (IHC (fro))

Product Details

Immunogen:	KLH conjugated synthetic peptide derived from human PRODH
Isotype:	IgG
Cross-Reactivity:	Mouse, Rat
Predicted Reactivity:	Human,Horse
Purification:	Purified by Protein A.

Target Details

Target:	PRODH
---------	-------

Target Details

Alternative Name:	PRODH (PRODH Products)
Background:	<p>Synonyms: POX, PIG6, HSPOX2, PRODH1, PRODH2, TP53I6, Proline dehydrogenase 1, mitochondrial, Proline oxidase, Proline oxidase 2, p53-induced gene 6 protein, PRODH, POX2</p> <p>Background: Proline oxidase catalyzes the conversion of proline to pyrroline-5-carboxylate, or P5C during the degradation of the amino acid Proline. Defects in PRODH are the cause of hyperprolinemia type 1, a disorder characterized by elevated serum proline levels. Defective PRODH may be involved in the psychiatric and behavioral phenotypes associated with the 22q11 velocardiofacial and DiGeorge syndrome and may be associated with susceptibility to schizophrenia 4 (SCZD4).</p>
Gene ID:	5625
UniProt:	O43272
Pathways:	Response to Water Deprivation , Monocarboxylic Acid Catabolic Process

Application Details

Application Notes:	<p>WB 1:300-5000</p> <p>ELISA 1:500-1000</p> <p>IHC-P 1:200-400</p> <p>IHC-F 1:100-500</p> <p>IF(IHC-P) 1:50-200</p> <p>IF(IHC-F) 1:50-200</p> <p>IF(ICC) 1:50-200</p>
Restrictions:	For Research Use only

Handling

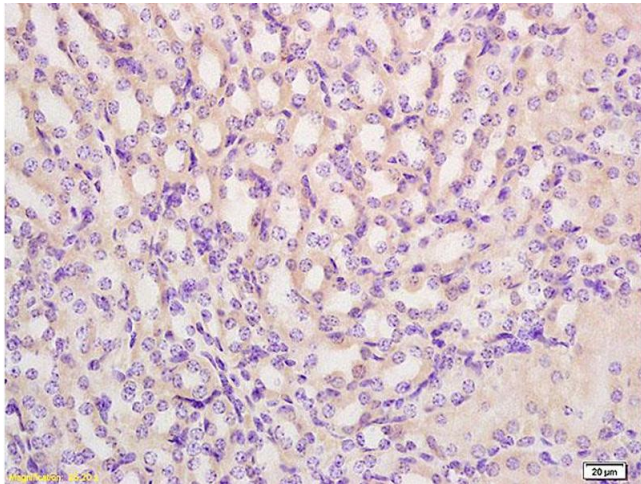
Format:	Liquid
Concentration:	1 µg/µL
Buffer:	0.01M TBS(pH 7.4) with 1 % BSA, 0.02 % Proclin300 and 50 % Glycerol.
Preservative:	ProClin
Precaution of Use:	This product contains ProClin: a POISONOUS AND HAZARDOUS SUBSTANCE, which should be handled by trained staff only.
Storage:	4 °C, -20 °C

Handling

Storage Comment: Shipped at 4°C. Store at -20°C for one year. Avoid repeated freeze/thaw cycles.

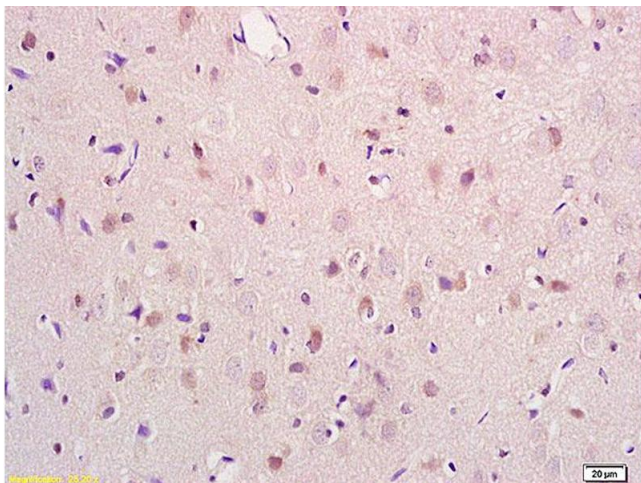
Expiry Date: 12 months

Images



Immunohistochemistry

Image 1. Formalin-fixed and paraffin embedded rat brain tissue labeled with Anti PRODH Polyclonal Antibody, Unconjugated (ABIN715136) at 1:200 followed by conjugation to the secondary antibody and DAB staining.



Immunohistochemistry

Image 2. Formalin-fixed and paraffin embedded mouse kidney tissue labeled with Anti PRODH Polyclonal Antibody, Unconjugated (ABIN715136) at 1:200 followed by conjugation to the secondary antibody and DAB staining.