

Datasheet for ABIN7151367  
**anti-CD39 antibody (AA 316-474)**[Go to Product page](#)

## 3 Images

## Overview

Quantity:	100 µg
Target:	CD39 (ENTPD1)
Binding Specificity:	AA 316-474
Reactivity:	Human
Host:	Rabbit
Clonality:	Polyclonal
Conjugate:	This CD39 antibody is un-conjugated
Application:	Western Blotting (WB), Immunohistochemistry (IHC), ELISA, Immunofluorescence (IF)

## Product Details

Immunogen:	Recombinant Human Ectonucleoside triphosphate diphosphohydrolase 1 protein (316-474AA)
Isotype:	IgG
Cross-Reactivity:	Human
Purification:	>95%, Protein G purified

## Target Details

Target:	CD39 (ENTPD1)
Alternative Name:	ENTPD1 ( <a href="#">ENTPD1 Products</a> )
Background:	Background: In the nervous system, could hydrolyze ATP and other nucleotides to regulate purinergic neurotransmission. Could also be implicated in the prevention of platelet aggregation

## Target Details

by hydrolyzing platelet-activating ADP to AMP. Hydrolyzes ATP and ADP equally well.

Aliases: ATPDase antibody, CD 39 antibody, CD39 antibody, CD39 antigen antibody, DKFZp686D194 antibody, DKFZp686I093 antibody, Ecto apyrase antibody, Ecto ATP diphosphohydrolase antibody, Ecto-apyrase antibody, Ecto-ATP diphosphohydrolase 1 antibody, Ecto-ATPase 1 antibody, Ecto-ATPDase 1 antibody, Ectonucleoside triphosphate diphosphohydrolase 1 antibody, ENTP1\_HUMAN antibody, ENTPD 1 antibody, ENTPD1 antibody, FLJ40921 antibody, FLJ40959 antibody, Lymphoid cell activation antigen antibody, NTPDase 1 antibody, NTPDase1 antibody, SPG64 antibody

UniProt: [P49961](#)

## Application Details

Application Notes: Recommended dilution: WB:1:500-1:5000, IHC:1:500-1:1000, IF:1:50-1:200,

Restrictions: For Research Use only

## Handling

Format: Liquid

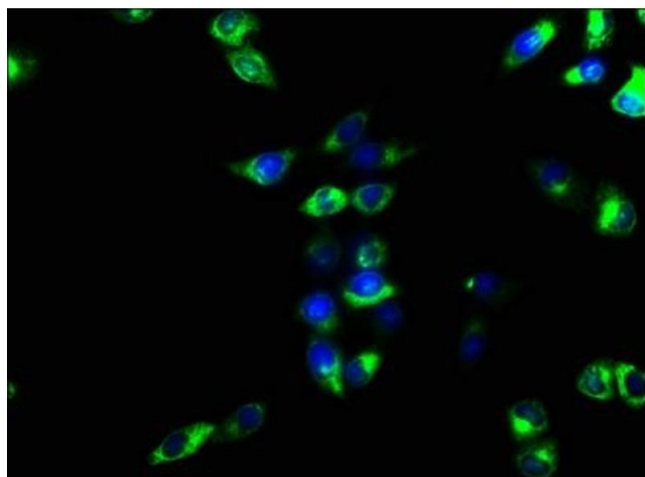
Buffer: Preservative: 0.03 % Proclin 300  
Constituents: 50 % Glycerol, 0.01M PBS, pH 7.4

Preservative: ProClin

Precaution of Use: This product contains ProClin: a POISONOUS AND HAZARDOUS SUBSTANCE which should be handled by trained staff only.

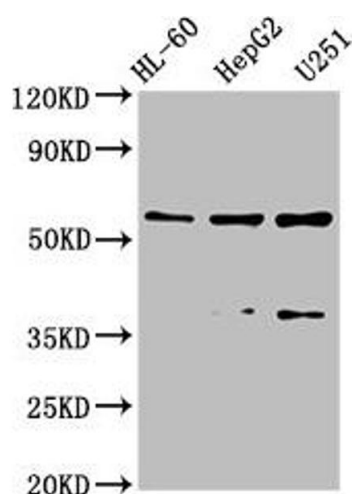
Storage: -20 °C,-80 °C

Storage Comment: Upon receipt, store at -20°C or -80°C. Avoid repeated freeze.



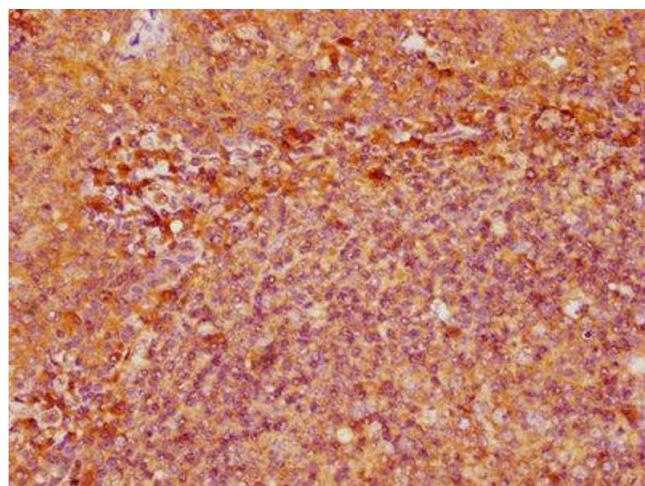
### Immunofluorescence

**Image 1.** Immunofluorescence staining of HeLa cells with ABIN7151367 at 1:166, counter-stained with DAPI. The cells were fixed in 4% formaldehyde, permeabilized using 0.2% Triton X-100 and blocked in 10% normal Goat Serum. The cells were then incubated with the antibody overnight at 4°C. The secondary antibody was Alexa Fluor 488-conjugated AffiniPure Goat Anti-Rabbit IgG(H+L).



### Western Blotting

**Image 2.** Western Blot Positive WB detected in: HL-60 whole cell lysate, HepG2 whole cell lysate, U251 whole cell lysate. All lanes: ENTDP1 antibody at 2.6 µg/mL. Secondary Goat polyclonal to rabbit IgG at 1/50000 dilution. Predicted band size: 58, 59, 35, 43, 47, 60 kDa. Observed band size: 58, 43 kDa.



### Immunohistochemistry

**Image 3.** IHC image of ABIN7151367 diluted at 1:500 and staining in paraffin-embedded human tonsil tissue performed on a Leica Bond™ system. After dewaxing and hydration, antigen retrieval was mediated by high pressure in a citrate buffer (pH 6.0). Section was blocked with 10% normal goat serum 30min at RT. Then primary antibody (1% BSA) was incubated at 4°C overnight. The primary is detected by a biotinylated secondary antibody and visualized using an HRP conjugated SP system.