

Datasheet for ABIN7151389
anti-ENPP2 antibody (AA 564-863)[Go to Product page](#)

2 Images

Overview

Quantity:	100 µL
Target:	ENPP2
Binding Specificity:	AA 564-863
Reactivity:	Human
Host:	Rabbit
Clonality:	Polyclonal
Conjugate:	This ENPP2 antibody is un-conjugated
Application:	ELISA, Immunohistochemistry (IHC)

Product Details

Immunogen:	Recombinant Human Ectonucleotide pyrophosphatase/phosphodiesterase family member 2 protein (564-863AA)
Isotype:	IgG
Cross-Reactivity:	Human
Purification:	Antigen Affinity Purified

Target Details

Target:	ENPP2
Alternative Name:	ENPP2 (ENPP2 Products)
Background:	Background: Hydrolyzes lysophospholipids to produce lysophosphatidic acid (LPA) in

Target Details

extracellular fluids. Major substrate is lysophosphatidylcholine. Also can act on sphingosylphosphorylcholine producing sphingosine-1-phosphate, a modulator of cell motility. Can hydrolyze, in vitro, bis-pNPP, to some extent pNP-TMP, and barely ATP. Involved in several motility-related processes such as angiogenesis and neurite outgrowth. Acts as an angiogenic factor by stimulating migration of smooth muscle cells and microtubule formation. Stimulates migration of melanoma cells, probably via a pertussis toxin-sensitive G protein. May have a role in induction of parturition. Possible involvement in cell proliferation and adipose tissue development. Tumor cell motility-stimulating factor.

Aliases: ATX antibody, ATX X antibody, Autotaxin antibody, Autotaxin t antibody, E NPP 2 antibody, E-NPP 2 antibody, Ectonucleotide pyrophosphatase/phosphodiesterase 2 antibody, Ectonucleotide pyrophosphatase/phosphodiesterase family member 2 antibody, Enpp2 antibody, ENPP2_HUMAN antibody, Extracellular lysophospholipase D antibody, FLJ26803 antibody, LysoPLD antibody, NPP2 antibody, PD IALPHA antibody, PDNP2 antibody, Phosphodiesterase I alpha antibody, Phosphodiesterase I/nucleotide pyrophosphatase 2 antibody, Plasma lysophospholipase D antibody

UniProt: [Q13822](#)

Application Details

Application Notes: Recommended dilution: IHC:1:20-1:200,

Restrictions: For Research Use only

Handling

Format: Liquid

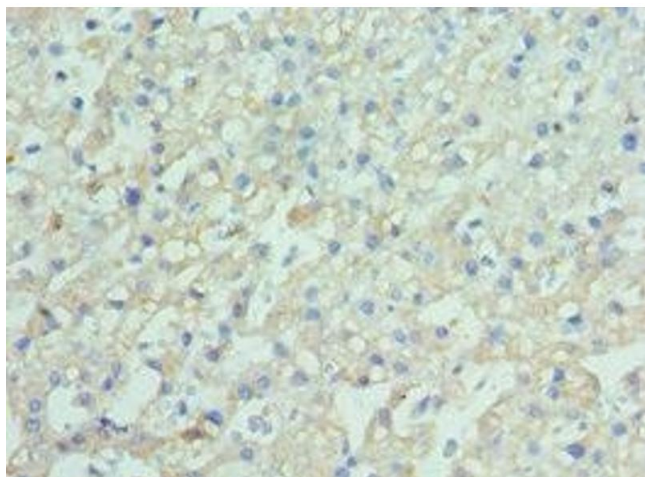
Buffer: PBS with 0.02 % sodium azide, 50 % glycerol, pH 7.3.

Preservative: Sodium azide

Precaution of Use: This product contains Sodium azide: a POISONOUS AND HAZARDOUS SUBSTANCE which should be handled by trained staff only.

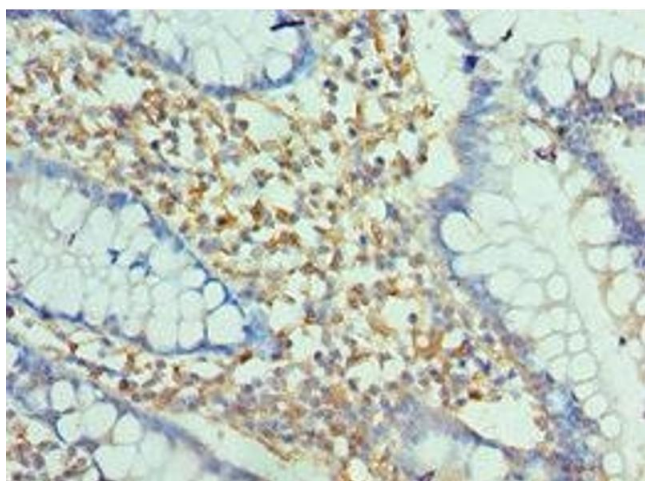
Storage: -20 °C,-80 °C

Storage Comment: Upon receipt, store at -20°C or -80°C. Avoid repeated freeze.



Immunohistochemistry

Image 1. Immunohistochemistry of paraffin-embedded human liver cancer using ABIN7151389 at dilution of 1:100



Immunohistochemistry

Image 2. Immunohistochemistry of paraffin-embedded human small intestine tissue using ABIN7151389 at dilution of 1:100