

Datasheet for ABIN7151394
anti-ENPP7 antibody (AA 22-216)[Go to Product page](#)

2 Images

Overview

Quantity:	100 µL
Target:	ENPP7
Binding Specificity:	AA 22-216
Reactivity:	Human
Host:	Rabbit
Clonality:	Polyclonal
Conjugate:	This ENPP7 antibody is un-conjugated
Application:	Western Blotting (WB), ELISA, Immunofluorescence (IF)

Product Details

Immunogen:	Recombinant Human Ectonucleotide pyrophosphatase/phosphodiesterase family member 7 protein (22-216AA)
Isotype:	IgG
Cross-Reactivity:	Human, Mouse
Purification:	>95%, Protein G purified

Target Details

Target:	ENPP7
Alternative Name:	ENPP7 (ENPP7 Products)
Background:	Background: Converts sphingomyelin to ceramide. Also has phospholipase C activity toward

Target Details

palmitoyl lyso-phosphocholine. Does not appear to have nucleotide pyrophosphatase activity.
Aliases: ALK SMase antibody, Alk-SMase antibody, Alkaline sphingomyelin phosphodiesterase antibody, E-NPP 7 antibody, Ectonucleotide pyrophosphatase/phosphodiesterase 7 antibody, Ectonucleotide pyrophosphatase/phosphodiesterase family member 7 antibody, ENPP7 antibody, ENPP7_HUMAN antibody, Intestinal alkaline sphingomyelinase antibody, NPP-7 antibody

UniProt: [Q6UWV6](#)

Application Details

Application Notes: Recommended dilution: WB:1:1000-1:5000, IF:1:200-1:500,

Restrictions: For Research Use only

Handling

Format: Liquid

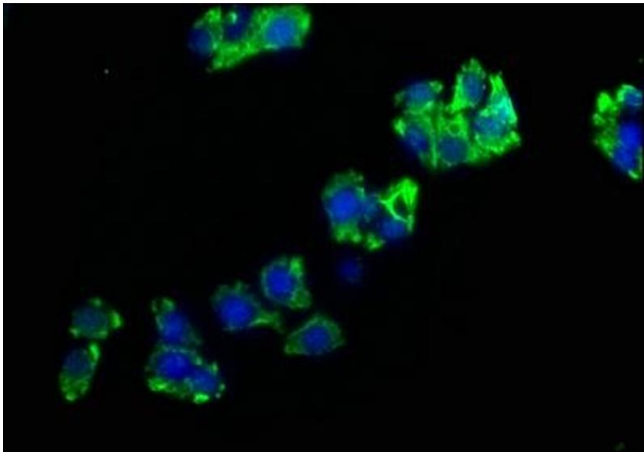
Buffer: Preservative: 0.03 % Proclin 300
Constituents: 50 % Glycerol, 0.01M PBS, pH 7.4

Preservative: ProClin

Precaution of Use: This product contains ProClin: a POISONOUS AND HAZARDOUS SUBSTANCE which should be handled by trained staff only.

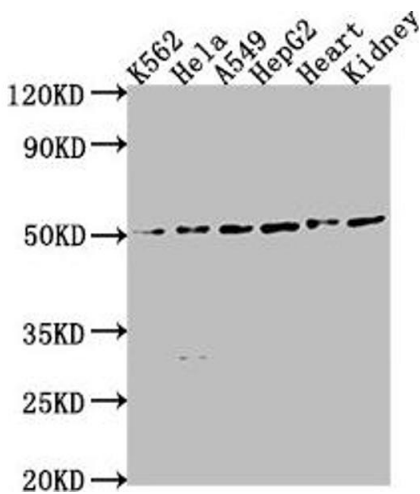
Storage: -20 °C, -80 °C

Storage Comment: Upon receipt, store at -20°C or -80°C. Avoid repeated freeze.



Immunofluorescence

Image 1. Immunofluorescence staining of HepG2 cells with ABIN7151394 at 1:200, counter-stained with DAPI. The cells were fixed in 4 % formaldehyde, permeabilized using 0.2 % Triton X-100 and blocked in 10 % normal Goat Serum. The cells were then incubated with the antibody overnight at 4 °C. The secondary antibody was Alexa Fluor 488-conjugated AffiniPure Goat Anti-Rabbit IgG(H+L).



Western Blotting

Image 2. Western Blot Positive WB detected in: K562 whole cell lysate, HeLa whole cell lysate, A549 whole cell lysate, HepG2 whole cell lysate, Mouse heart tissue, Mouse kidney tissue. All lanes: ENPP7 antibody at 1:2000. Secondary Goat polyclonal to rabbit IgG at 1/50000 dilution. Predicted band size: 52 kDa. Observed band size: 52 kDa.