

Datasheet for ABIN7151432
anti-FBLN3 antibody (AA 27-184)[Go to Product page](#)

2 Images

Overview

Quantity:	100 µg
Target:	FBLN3
Binding Specificity:	AA 27-184
Reactivity:	Human
Host:	Rabbit
Clonality:	Polyclonal
Conjugate:	This FBLN3 antibody is un-conjugated
Application:	Immunohistochemistry (IHC), ELISA, Immunofluorescence (IF)

Product Details

Immunogen:	Recombinant Human EGF-containing fibulin-like extracellular matrix protein 1 protein (27-184AA)
Isotype:	IgG
Cross-Reactivity:	Human
Purification:	>95%, Protein G purified

Target Details

Target:	FBLN3
Alternative Name:	EFEMP1 (FBLN3 Products)
Background:	Background: Binds EGFR, the EGF receptor, inducing EGFR autophosphorylation and the

Target Details

activation of downstream signaling pathways. May play a role in cell adhesion and migration. May function as a negative regulator of chondrocyte differentiation. In the olfactory epithelium, it may regulate glial cell migration, differentiation and the ability of glial cells to support neuronal neurite outgrowth.

Aliases: DHRD antibody, Doyne honeycomb retinal degeneration antibody, DRAD antibody, EFEMP 1 antibody, EFEMP1 antibody, EGF containing fibulin like extracellular matrix protein 1 antibody, EGF containing fibulin like extracellular matrix protein 1 precursor antibody, EGF-containing fibulin-like extracellular matrix protein 1 antibody, Epidermal growth factor containing fibulin like extracellular matrix protein 1 antibody, Extracellular protein S1 5 antibody, Extracellular protein S1-5 antibody, FBLN 3 antibody, FBLN3 antibody, FBLN3_HUMAN antibody, FBNL antibody, FIBL 3 antibody, FIBL-3 antibody, FIBL3 antibody, Fibrillin like antibody, Fibrillin like protein antibody, Fibrillin-like protein antibody, FIBULIN 3 antibody, Fibulin-3 antibody, Fibulin3 antibody, FLJ35535 antibody, Heat shock 70 KD protein 1 antibody, MGC111353 antibody, MLVT antibody, MTLV antibody, S1 5 antibody, T16 protein antibody

UniProt: [Q12805](#)

Pathways: [EGFR Signaling Pathway](#)

Application Details

Application Notes: Recommended dilution: IHC:1:20-1:200, IF:1:50-1:200,

Restrictions: For Research Use only

Handling

Format: Liquid

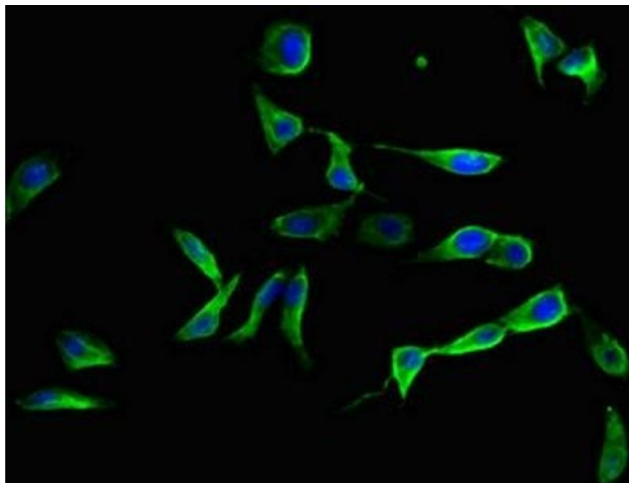
Buffer: Preservative: 0.03 % Proclin 300
Constituents: 50 % Glycerol, 0.01M PBS, PH 7.4

Preservative: ProClin

Precaution of Use: This product contains ProClin: a POISONOUS AND HAZARDOUS SUBSTANCE which should be handled by trained staff only.

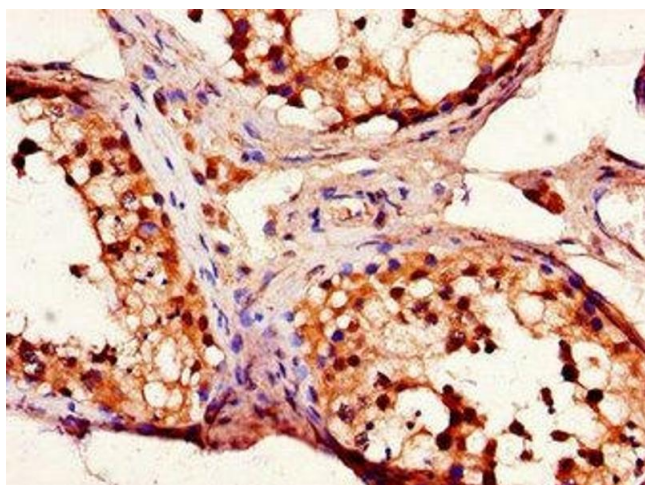
Storage: -20 °C,-80 °C

Storage Comment: Upon receipt, store at -20°C or -80°C. Avoid repeated freeze.



Immunofluorescence

Image 1. Immunofluorescent analysis of HeLa cells using ABIN7151432 at dilution of 1:100 and Alexa Fluor 488-conjugated AffiniPure Goat Anti-Rabbit IgG(H+L)



Immunohistochemistry

Image 2. Immunohistochemistry of paraffin-embedded human testis tissue using ABIN7151432 at dilution of 1:100