

Datasheet for ABIN7151440
anti-EDIL3 antibody (AA 60-300)



[Go to Product page](#)

2 Images

Overview

Quantity:	100 µL
Target:	EDIL3 (DEL1)
Binding Specificity:	AA 60-300
Reactivity:	Human
Host:	Rabbit
Clonality:	Polyclonal
Conjugate:	This EDIL3 antibody is un-conjugated
Application:	Western Blotting (WB), Immunohistochemistry (IHC), ELISA

Product Details

Immunogen:	Recombinant Human EGF-like repeat and discoidin I-like domain-containing protein 3 protein (60-300AA)
Isotype:	IgG
Cross-Reactivity:	Human
Purification:	Antigen Affinity Purified

Target Details

Target:	EDIL3 (DEL1)
Alternative Name:	EDIL3 (DEL1 Products)
Background:	Background: Promotes adhesion of endothelial cells through interaction with the alpha-v/beta-3

Target Details

integrin receptor. Inhibits formation of vascular-like structures. May be involved in regulation of vascular morphogenesis of remodeling in embryonic development.

Aliases: DEL1 antibody, Developmental endothelial locus 1 antibody, Developmentally regulated endothelial cell locus 1 protein antibody, Developmentally-regulated endothelial cell locus 1 protein antibody, Edil3 antibody, EDIL3_HUMAN antibody, EGF like repeat and discoidin I like domain containing protein 3 antibody, EGF like repeats and discoidin I like domains 3 antibody, EGF like repeats and discoidin I like domains protein 3 antibody, EGF-like repeat and discoidin I-like domain-containing protein 3 antibody, Integrin binding protein DEL1 antibody, Integrin-binding protein DEL1 antibody

UniProt: [O43854](#)

Application Details

Application Notes: Recommended dilution: WB:1:1000-1:5000, IHC:1:20-1:200,

Restrictions: For Research Use only

Handling

Format: Liquid

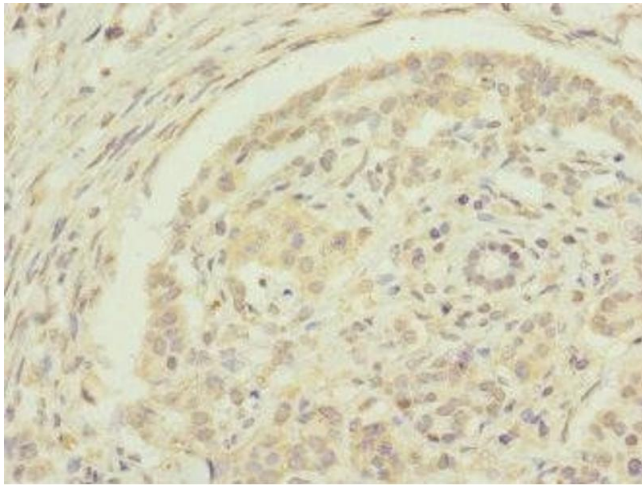
Buffer: PBS with 0.02 % sodium azide, 50 % glycerol, pH 7.3.

Preservative: Sodium azide

Precaution of Use: This product contains Sodium azide: a POISONOUS AND HAZARDOUS SUBSTANCE which should be handled by trained staff only.

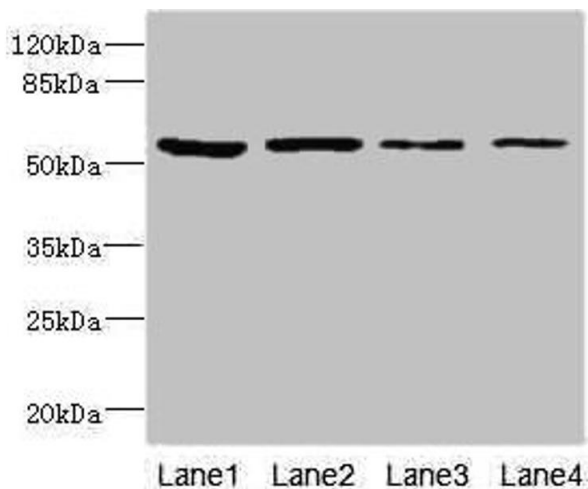
Storage: -20 °C,-80 °C

Storage Comment: Upon receipt, store at -20°C or -80°C. Avoid repeated freeze.



Immunohistochemistry

Image 1. Immunohistochemistry of paraffin-embedded human pancreatic cancer using ABIN7151440 at dilution of 1:100



Western Blotting

Image 2. Western blot All lanes: EDIL3 antibody at 3.09 μ g/mL Lane 1: 293T whole cell lysate Lane 2: Hela whole cell lysate Lane 3: HepG2 whole cell lysate Lane 4: K562 whole cell lysate Secondary Goat polyclonal to rabbit IgG at 1/10000 dilution Predicted band size: 54, 53 kDa Observed band size: 54 kDa