



Datasheet for ABIN7151487
anti-ELAVL4 antibody (AA 1-150)



[Go to Product page](#)

4 Images

Overview

Quantity:	100 µg
Target:	ELAVL4
Binding Specificity:	AA 1-150
Reactivity:	Human
Host:	Rabbit
Clonality:	Polyclonal
Conjugate:	This ELAVL4 antibody is un-conjugated
Application:	ELISA, Western Blotting (WB), Immunohistochemistry (IHC), Immunofluorescence (IF)

Product Details

Immunogen:	Recombinant Human ELAV-like protein 4 protein (1-150AA)
Isotype:	IgG
Cross-Reactivity:	Human
Purification:	Antigen Affinity Purified

Target Details

Target:	ELAVL4
Alternative Name:	ELAVL4 (ELAVL4 Products)
Background:	Background: May play a role in neuron-specific RNA processing. Protects CDKN1A mRNA from decay by binding to its 3' UTR (By similarity). Binds to AU-rich sequences (AREs) of target

Target Details

mRNAs, including VEGF and FOS mRNA.

Aliases: ELAV (embryonic lethal abnormal vision Drosophila) like 4 antibody, ELAV L4 antibody, ELAV like 4 antibody, ELAV like protein 4 antibody, ELAV-like protein 4 antibody, ELAV4_HUMAN antibody, Elavl4 antibody, Embryonic lethal abnormal vision Drosophila homolog of like 4 antibody, Hu antigen D antibody, Hu-antigen D antibody, HuD antibody, Paraneoplastic encephalomyelitis antigen HuD antibody, PNEM antibody

UniProt: [P26378](#)

Application Details

Application Notes: Recommended dilution: WB:1:500-1:2000, IHC:1:20-1:200, IF:1:50-1:200,

Restrictions: For Research Use only

Handling

Format: Liquid

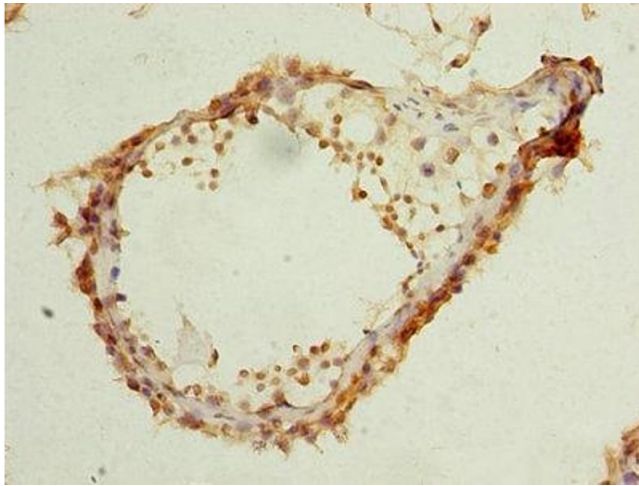
Buffer: Preservative: 0.03 % Proclin 300
Constituents: 50 % Glycerol, 0.01M PBS, PH 7.4

Preservative: ProClin

Precaution of Use: This product contains ProClin: a POISONOUS AND HAZARDOUS SUBSTANCE which should be handled by trained staff only.

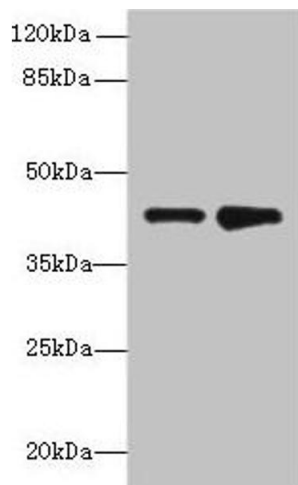
Storage: -20 °C,-80 °C

Storage Comment: Upon receipt, store at -20°C or -80°C. Avoid repeated freeze.



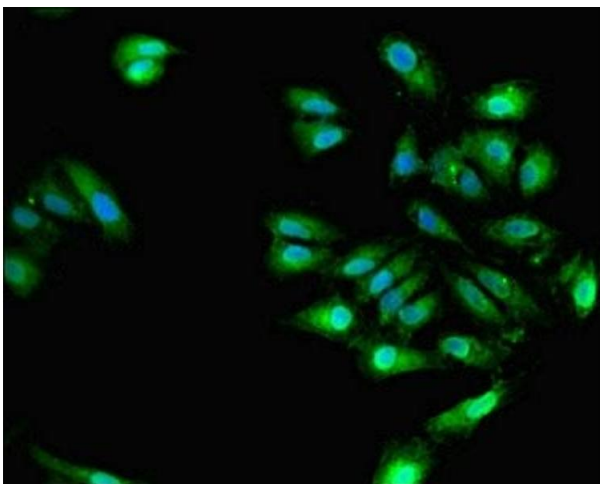
Immunohistochemistry

Image 1. Immunohistochemistry of paraffin-embedded human testis tissue using ABIN7151487 at dilution of 1:100



Western Blotting

Image 2. Western blot All lanes: ELAVL4 antibody at 2 μ g/mL Lane 1: MCF-7 whole cell lysate Lane 2: 293T whole cell lysate Secondary Goat polyclonal to rabbit IgG at 1/10000 dilution Predicted band size: 42, 41, 43 kDa Observed band size: 42 kDa



Immunofluorescence

Image 3. Immunofluorescent analysis of HeLa cells using ABIN7151487 at dilution of 1:100 and Alexa Fluor 488-conjugated AffiniPure Goat Anti-Rabbit IgG(H+L)

Please check the [product details page](#) for more images. Overall 4 images are available for ABIN7151487.