



[Go to Product page](#)

Datasheet for ABIN7151499
anti-ETFA antibody (AA 1-333)

3 Images

Overview

Quantity:	100 µL
Target:	ETFA
Binding Specificity:	AA 1-333
Reactivity:	Human
Host:	Rabbit
Clonality:	Polyclonal
Conjugate:	This ETFA antibody is un-conjugated
Application:	Western Blotting (WB), Immunohistochemistry (IHC), ELISA

Product Details

Immunogen:	Recombinant Human Electron transfer flavoprotein subunit alpha, mitochondrial protein (1-333AA)
Isotype:	IgG
Cross-Reactivity:	Human
Purification:	Antigen Affinity Purified

Target Details

Target:	ETFA
Alternative Name:	ETFA (ETFA Products)
Background:	Background: The electron transfer flavoprotein serves as a specific electron acceptor for

Target Details

several dehydrogenases, including five acyl-CoA dehydrogenases, glutaryl-CoA and sarcosine dehydrogenase. It transfers the electrons to the main mitochondrial respiratory chain via ETF-ubiquinone oxidoreductase (ETF dehydrogenase).

Aliases: Alpha ETF antibody, Alpha-ETF antibody, Electron transfer flavoprotein alpha polypeptide antibody, Electron transfer flavoprotein alpha subunit antibody, Electron transfer flavoprotein subunit alpha mitochondrial antibody, Electron transfer flavoprotein subunit alpha mitochondrial antibody, Electron transferring flavoprotein alpha polypeptide antibody, EMA antibody, ETFA antibody, ETFA_HUMAN antibody, GA2 antibody, Glutaric aciduria II antibody

UniProt: [P13804](#)

Pathways: [SARS-CoV-2 Protein Interactome](#)

Application Details

Application Notes: Recommended dilution: WB:1:1000-1:5000, IHC:1:20-1:200,

Restrictions: For Research Use only

Handling

Format: Liquid

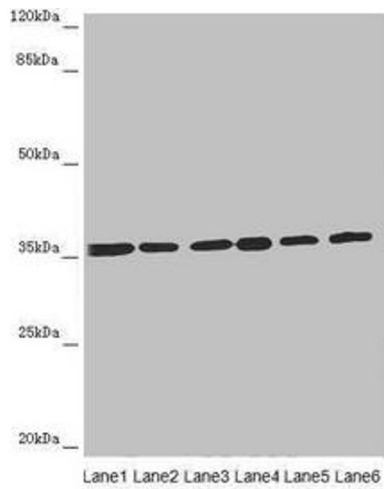
Buffer: PBS with 0.02 % sodium azide, 50 % glycerol, pH 7.3.

Preservative: Sodium azide

Precaution of Use: This product contains Sodium azide: a POISONOUS AND HAZARDOUS SUBSTANCE which should be handled by trained staff only.

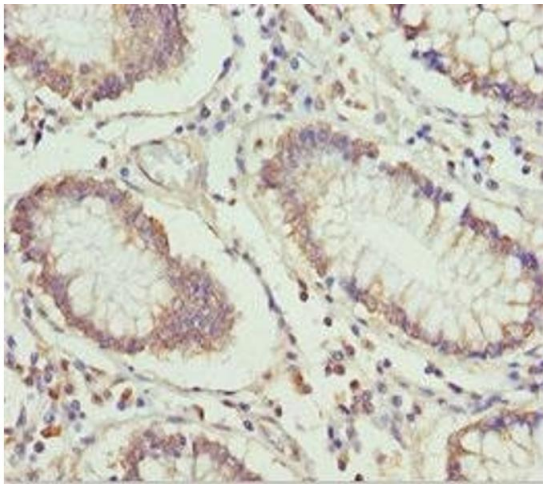
Storage: -20 °C,-80 °C

Storage Comment: Upon receipt, store at -20°C or -80°C. Avoid repeated freeze.



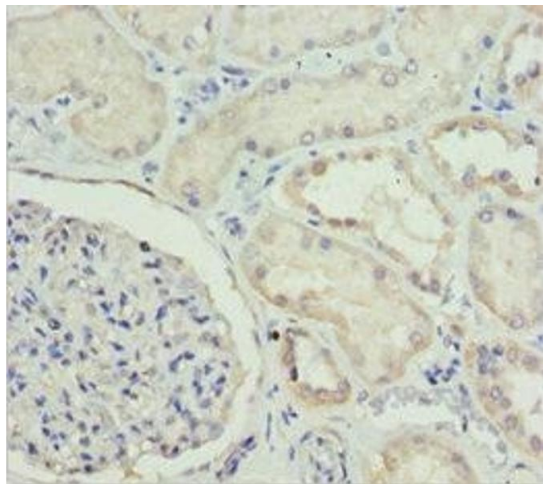
Western Blotting

Image 1. Western blot All lanes: ETFA antibody at 4.34 μ g/mL Lane 1: A431 whole cell lysate Lane 2: Hela whole cell lysate Lane 3: K562 whole cell lysate Lane 4: A549 whole cell lysate Lane 5: HepG2 whole cell lysate Lane 6: MCF-7 whole cell lysate Secondary Goat polyclonal to rabbit IgG at 1/10000 dilution Predicted band size: 36, 31 kDa Observed band size: 36 kDa



Immunohistochemistry

Image 2. Immunohistochemistry of paraffin-embedded human colon cancer using ABIN7151499 at dilution of 1:100



Immunohistochemistry

Image 3. Immunohistochemistry of paraffin-embedded human kidney tissue using ABIN7151499 at dilution of 1:100