



Datasheet for ABIN715151
anti-Prominin 2 antibody (AA 301-400)



[Go to Product page](#)

3 Images

2 Publications

Overview

Quantity:	100 µL
Target:	Prominin 2 (PROM2)
Binding Specificity:	AA 301-400
Reactivity:	Human
Host:	Rabbit
Clonality:	Polyclonal
Conjugate:	This Prominin 2 antibody is un-conjugated
Application:	Western Blotting (WB), ELISA, Flow Cytometry (FACS), Immunofluorescence (Cultured Cells) (IF (cc)), Immunofluorescence (Paraffin-embedded Sections) (IF (p)), Immunohistochemistry (Paraffin-embedded Sections) (IHC (p)), Immunohistochemistry (Frozen Sections) (IHC (fro))

Product Details

Immunogen:	KLH conjugated synthetic peptide derived from human Prominin 2
Isotype:	IgG
Cross-Reactivity:	Human
Predicted Reactivity:	Mouse,Rat,Dog,Pig
Purification:	Purified by Protein A.

Target Details

Target:	Prominin 2 (PROM2)
---------	--------------------

Target Details

Alternative Name: Prominin 2 ([PROM2 Products](#))

Background: Synonyms: PROMML2, Prominin-2, PROM-2, Prominin-like protein 2, hPROML2, PROM2, UNQ2521/PRO6014

Background: Prominin 2 is a 112 kDa glycoprotein structurally related to Prominin 1 (CD133) although amino acid similarity is not more than 30 % , but their genomic organization is strikingly similar. Like Prominin 1, the prominin 2 exhibit similar membrane topology with 5 trans-membrane domains and two large glycosylated extracellular domains. Similar to Prominin1 localization, the Prominin 2 is also associated with membrane protrusions of the epithelial cells from adult kidney, and all along the digestive track and other epithelial tissues. Prominin 2 expression is down-regulated in aggressive prostate cancer cell lines and transient transfection of PROMML2 expression vectors has been shown to induce apoptosis in cultured prostate cancer cells, suggesting a tumor suppressive role for Prominin 2. Prominin 2 expression is likely to be involved in growth suppression in the prostate, and down-regulation of Prominin 2 may disrupt normal prostatic homeostasis and lead to uncontrolled prostatic growth.

Gene ID: 150696

UniProt: [Q8N271](#)

Application Details

Application Notes: WB 1:300-5000
ELISA 1:500-1000
FCM 1:20-100
IHC-P 1:200-400
IHC-F 1:100-500
IF(IHC-P) 1:50-200
IF(IHC-F) 1:50-200
IF(ICC) 1:50-200

Restrictions: For Research Use only

Handling

Format: Liquid

Concentration: 1 µg/µL

Buffer: 0.01M TBS(pH 7.4) with 1 % BSA, 0.02 % Proclin300 and 50 % Glycerol.

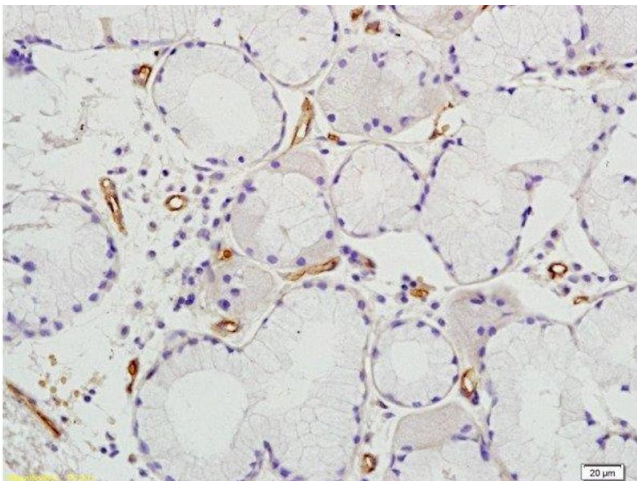
Handling

Preservative:	ProClin
Precaution of Use:	This product contains ProClin: a POISONOUS AND HAZARDOUS SUBSTANCE, which should be handled by trained staff only.
Storage:	4 °C,-20 °C
Storage Comment:	Shipped at 4°C. Store at -20°C for one year. Avoid repeated freeze/thaw cycles.
Expiry Date:	12 months

Publications

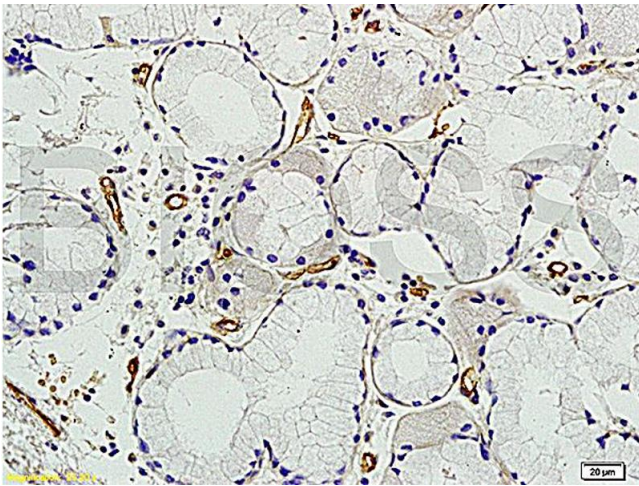
- Product cited in:
- Turco, Lam, Rule, Denic, Lieske, Miller, Larson, Kremers, Jayachandran: "Specific renal parenchymal-derived urinary extracellular vesicles identify age-associated structural changes in living donor kidneys." in: **Journal of extracellular vesicles**, Vol. 5, pp. 29642, (2016) ([PubMed](#)).
- Jayachandran, Lugo, Heiling, Miller, Rule, Lieske: "Extracellular vesicles in urine of women with but not without kidney stones manifest patterns similar to men: a case control study." in: **Biology of sex differences**, Vol. 6, pp. 2, (2015) ([PubMed](#)).

Images



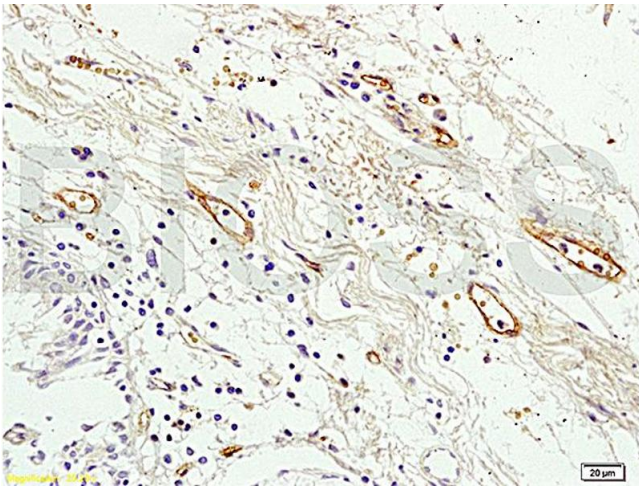
Immunohistochemistry (Paraffin-embedded Sections)

Image 1. Formalin-fixed and paraffin embedded human colon tissue labeled with Anti Prominin2 Polyclonal Antibody, Unconjugated at 1:200 followed by conjugation to the secondary antibody and DAB staining



Immunohistochemistry

Image 2. Formalin-fixed and paraffin embedded human colon tissue labeled with Anti Prominin2 Polyclonal Antibody, unconjugated (ABIN715151) at 1:200 followed by incubation with conjugated secondary antibody and DAB staining



Immunohistochemistry

Image 3. Formalin-fixed and paraffin embedded human colon tissue labeled with Anti Prominin2 Polyclonal Antibody, Unconjugated (ABIN715151) at 1:200 followed by conjugation to the secondary antibody and DAB staining