

Datasheet for ABIN7151510
anti-ERC1 antibody (AA 1-224)[Go to Product page](#)

2 Images

Overview

Quantity:	100 µL
Target:	ERC1
Binding Specificity:	AA 1-224
Reactivity:	Human
Host:	Rabbit
Clonality:	Polyclonal
Conjugate:	This ERC1 antibody is un-conjugated
Application:	Western Blotting (WB), ELISA, Immunofluorescence (IF)

Product Details

Immunogen:	Recombinant Human ELKS/Rab6-interacting/CAST family member 1 protein (1-224AA)
Isotype:	IgG
Cross-Reactivity:	Human
Purification:	>95%, Protein G purified

Target Details

Target:	ERC1
Alternative Name:	ERC1 (ERC1 Products)
Background:	Background: Regulatory subunit of the IKK complex. Probably recruits IκappaBalpha/NFKBIA to the complex. May be involved in the organization of the cytomatrix at the nerve terminals active

Target Details

zone (CAZ) which regulates neurotransmitter release. May be involved in vesicle trafficking at the CAZ. May be involved in Rab-6 regulated endosomes to Golgi transport.

Aliases: Cast 2 antibody, CAST2 antibody, CAZ associated structural protein 2 antibody, Elks antibody, ELKS/RAB6 interacting/CAST family member 1 antibody, ELKS/RAB6-interacting/CAST family member 1 antibody, ERC 1 antibody, ERC protein 1 antibody, ERC-1 antibody, Erc1 antibody, ERC1 protein antibody, KIAA1081 antibody, MGC12974 antibody, RAB6 interacting protein 2 antibody, RAB6-interacting protein 2 antibody, RAB6IP2 antibody, RB6I2_HUMAN antibody

UniProt: [Q8IUD2](#)

Pathways: [SARS-CoV-2 Protein Interactome](#), [The Global Phosphorylation Landscape of SARS-CoV-2 Infection](#)

Application Details

Application Notes: Recommended dilution: WB:1:1000-1:5000, IF:1:50-1:200,

Restrictions: For Research Use only

Handling

Format: Liquid

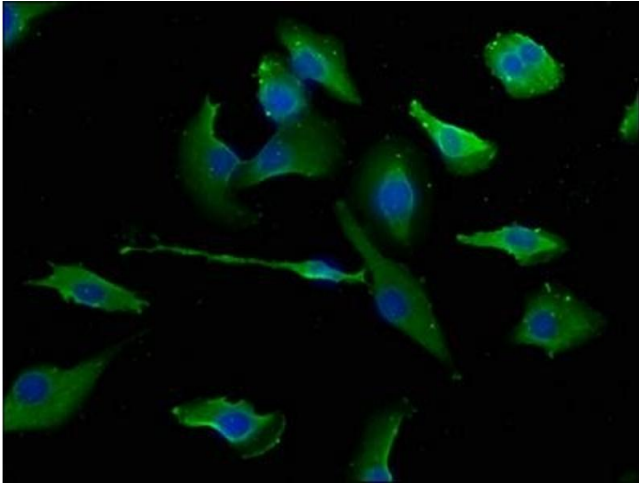
Buffer: Preservative: 0.03 % Proclin 300
Constituents: 50 % Glycerol, 0.01M PBS, pH 7.4

Preservative: ProClin

Precaution of Use: This product contains ProClin: a POISONOUS AND HAZARDOUS SUBSTANCE which should be handled by trained staff only.

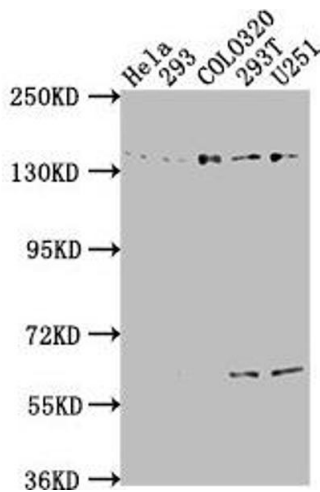
Storage: -20 °C,-80 °C

Storage Comment: Upon receipt, store at -20°C or -80°C. Avoid repeated freeze.



Immunofluorescence

Image 1. Immunofluorescence staining of U251 cells with ABIN7151510 at 1:133, counter-stained with DAPI. The cells were fixed in 4 % formaldehyde, permeabilized using 0.2 % Triton X-100 and blocked in 10 % normal Goat Serum. The cells were then incubated with the antibody overnight at 4 °C. The secondary antibody was Alexa Fluor 488-conjugated AffiniPure Goat Anti-Rabbit IgG(H+L).



Western Blotting

Image 2. Western Blot Positive WB detected in: HeLa whole cell lysate, 293 whole cell lysate, COLO320 whole cell lysate, 293T whole cell lysate, U251 whole cell lysate. All lanes: ERC1 antibody at 1:2000. Secondary Goat polyclonal to rabbit IgG at 1/50000 dilution. Predicted band size: 129, 114, 125, 109, 82 kDa. Observed band size: 135 kDa.