

Datasheet for ABIN7151514  
**anti-EAF2 antibody (AA 1-170)**

## 3 Images

[Go to Product page](#)

## Overview

Quantity:	100 µL
Target:	EAF2
Binding Specificity:	AA 1-170
Reactivity:	Human
Host:	Rabbit
Clonality:	Polyclonal
Conjugate:	This EAF2 antibody is un-conjugated
Application:	ELISA, Immunohistochemistry (IHC), Western Blotting (WB)

## Product Details

Immunogen:	Recombinant Human ELL-associated factor 2 protein (1-170AA)
Isotype:	IgG
Cross-Reactivity:	Human, Mouse, Rat
Purification:	Antigen Affinity Purified

## Target Details

Target:	EAF2
Alternative Name:	EAF2 ( <a href="#">EAF2 Products</a> )
Background:	Background: Acts as a transcriptional transactivator of TCEA1 elongation activity (By similarity). Acts as a transcriptional transactivator of ELL and ELL2 elongation activities. Potent inducer of

## Target Details

apoptosis in prostatic and non-prostatic cell lines. Inhibits prostate tumor growth in vivo.

Aliases: BM 040 antibody, BM040 antibody, EAF 2 antibody, EAF2 antibody, EAF2\_HUMAN antibody, Ehrlich S II transcriptional activator factor antibody, ELL associated factor 2 antibody, ELL-associated factor 2 antibody, Festa antibody, Testosterone regulated apoptosis inducer and tumor suppressor antibody, Testosterone regulated apoptosis inducer and tumor suppressor protein antibody, Testosterone-regulated apoptosis inducer and tumor suppressor protein antibody, TRAITS antibody, U19 antibody, Uncharacterized bone marrow protein BM 040 antibody, Uncharacterized bone marrow protein BM040 antibody

UniProt: [Q96CJ1](#)

## Application Details

Application Notes: Recommended dilution: WB:1:1000-1:5000, IHC:1:20-1:200,

Restrictions: For Research Use only

## Handling

Format: Liquid

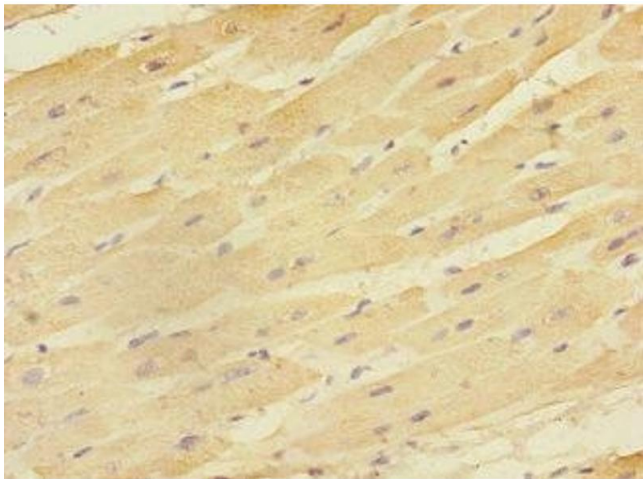
Buffer: PBS with 0.02 % sodium azide, 50 % glycerol, pH 7.3.

Preservative: Sodium azide

Precaution of Use: This product contains Sodium azide: a POISONOUS AND HAZARDOUS SUBSTANCE which should be handled by trained staff only.

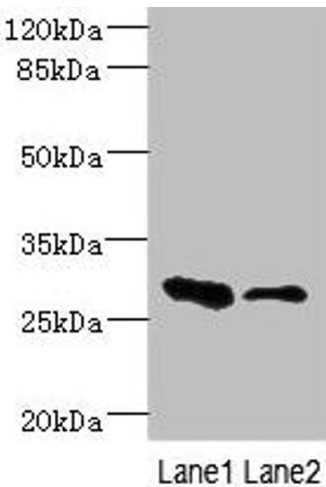
Storage: -20 °C,-80 °C

Storage Comment: Upon receipt, store at -20°C or -80°C. Avoid repeated freeze.



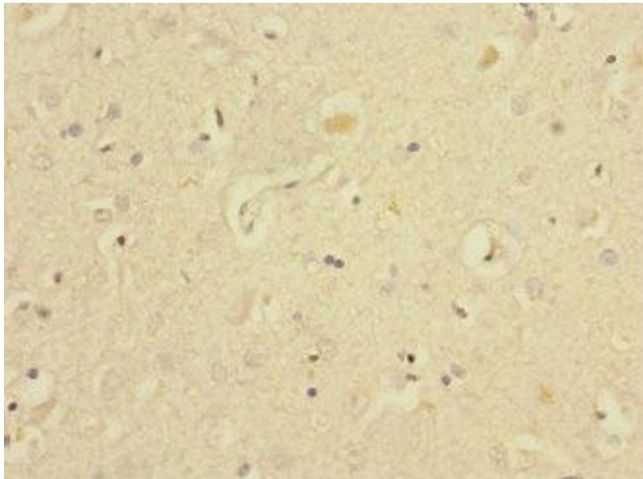
Immunohistochemistry

**Image 1.** Immunohistochemistry of paraffin-embedded human heart tissue using ABIN7151514 at dilution of 1:100



Western Blotting

**Image 2.** Western blot All lanes: EAF2 antibody at 3.6 µg/mL  
Lane 1: Rat heart tissue Lane 2: Mouse kidney tissue  
Secondary Goat polyclonal to rabbit IgG at 1/10000 dilution  
Predicted band size: 29, 15 kDa Observed band size: 29 kDa



Immunohistochemistry

**Image 3.** Immunohistochemistry of paraffin-embedded human brain tissue using ABIN7151514 at dilution of 1:100