

Datasheet for ABIN7151516
anti-EAF2 antibody (AA 6-100)[Go to Product page](#)

3 Images

Overview

Quantity:	100 µg
Target:	EAF2
Binding Specificity:	AA 6-100
Reactivity:	Human
Host:	Rabbit
Clonality:	Polyclonal
Conjugate:	This EAF2 antibody is un-conjugated
Application:	ELISA, Immunohistochemistry (IHC), Western Blotting (WB), Immunofluorescence (IF)

Product Details

Immunogen:	Recombinant Human ELL-associated factor 2 protein (6-100AA)
Isotype:	IgG
Cross-Reactivity:	Human, Mouse
Purification:	>95%, Protein G purified

Target Details

Target:	EAF2
Alternative Name:	EAF2 (EAF2 Products)
Background:	Background: Acts as a transcriptional transactivator of TCEA1 elongation activity (By similarity). Acts as a transcriptional transactivator of ELL and ELL2 elongation activities. Potent inducer of

Target Details

apoptosis in prostatic and non-prostatic cell lines. Inhibits prostate tumor growth in vivo.

Aliases: BM 040 antibody, BM040 antibody, EAF 2 antibody, EAF2 antibody, EAF2_HUMAN antibody, Ehrlich S II transcriptional activator factor antibody, ELL associated factor 2 antibody, ELL-associated factor 2 antibody, Festa antibody, Testosterone regulated apoptosis inducer and tumor suppressor antibody, Testosterone regulated apoptosis inducer and tumor suppressor protein antibody, Testosterone-regulated apoptosis inducer and tumor suppressor protein antibody, TRAITS antibody, U19 antibody, Uncharacterized bone marrow protein BM 040 antibody, Uncharacterized bone marrow protein BM040 antibody

UniProt: [Q96CJ1](#)

Application Details

Application Notes: Recommended dilution: WB:1:500-1:5000, IHC:1:1000-1:2000, IF:1:50-1:500,

Restrictions: For Research Use only

Handling

Format: Liquid

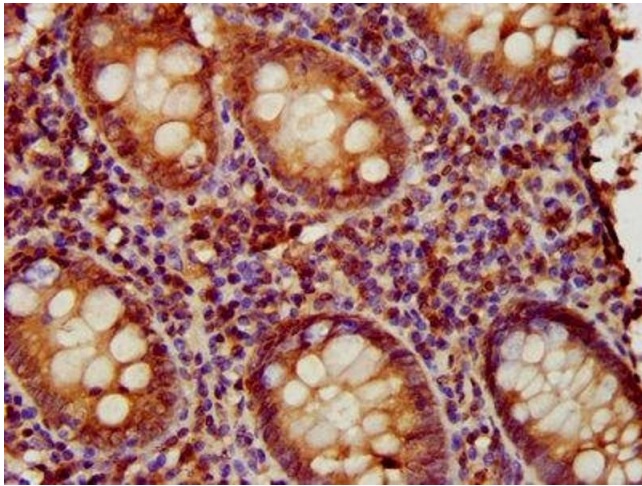
Buffer: Preservative: 0.03 % Proclin 300
Constituents: 50 % Glycerol, 0.01M PBS, PH 7.4

Preservative: ProClin

Precaution of Use: This product contains ProClin: a POISONOUS AND HAZARDOUS SUBSTANCE which should be handled by trained staff only.

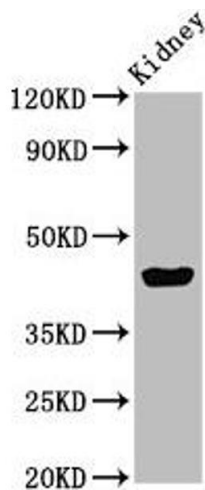
Storage: -20 °C,-80 °C

Storage Comment: Upon receipt, store at -20°C or -80°C. Avoid repeated freeze.



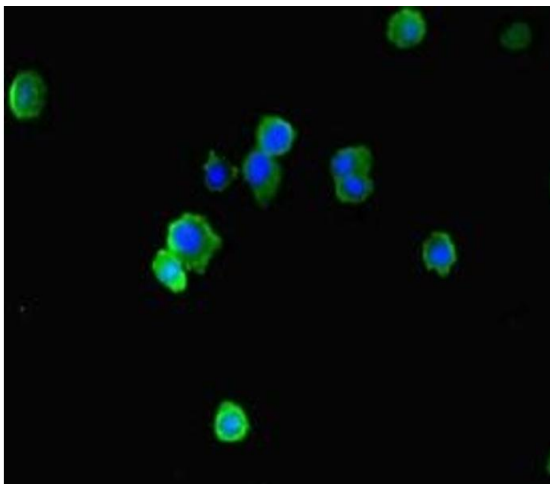
Immunohistochemistry

Image 1. IHC image of ABIN7151516 diluted at 1:1000 and staining in paraffin-embedded human appendix tissue performed on a Leica Bond™ system. After dewaxing and hydration, antigen retrieval was mediated by high pressure in a citrate buffer (pH 6.0). Section was blocked with 10 % normal goat serum 30 min at RT. Then primary antibody (1 % BSA) was incubated at 4 °C overnight. The primary is detected by a biotinylated secondary antibody and visualized using an HRP conjugated SP system.



Western Blotting

Image 2. Western Blot Positive WB detected in: Mouse kidney tissue All lanes: EAF2 antibody at 3 µg/mL Secondary Goat polyclonal to rabbit IgG at 1/50000 dilution Predicted band size: 29, 15 kDa Observed band size: 45 kDa



Immunofluorescence

Image 3. Immunofluorescence staining of HepG2 cells with ABIN7151516 at 1:333, counter-stained with DAPI. The cells were fixed in 4 % formaldehyde, permeabilized using 0.2 % Triton X-100 and blocked in 10 % normal Goat Serum. The cells were then incubated with the antibody overnight at 4 °C. The secondary antibody was Alexa Fluor 488-conjugated AffiniPure Goat Anti-Rabbit IgG(H+L).