

Datasheet for ABIN7151530
anti-ELMOD3 antibody (AA 1-102)[Go to Product page](#)

4 Images

Overview

Quantity:	100 µg
Target:	ELMOD3
Binding Specificity:	AA 1-102
Reactivity:	Human
Host:	Rabbit
Clonality:	Polyclonal
Conjugate:	This ELMOD3 antibody is un-conjugated
Application:	Western Blotting (WB), ELISA, Immunohistochemistry (IHC), Immunofluorescence (IF)

Product Details

Immunogen:	Recombinant Human ELMO domain-containing protein 3 protein (1-102AA)
Isotype:	IgG
Cross-Reactivity:	Human
Purification:	>95%, Protein G purified

Target Details

Target:	ELMOD3
Alternative Name:	ELMOD3 (ELMOD3 Products)
Background:	Background: Acts as a GTPase-activating protein (GAP) for ARL2 with low specific activity. Aliases: ELMOD3 antibody, RBED1 antibody, RBM29 antibody, PP4068ELMO domain-containing

Target Details

protein 3 antibody, RNA-binding motif and ELMO domain-containing protein 1 antibody, RNA-binding motif protein 29 antibody, RNA-binding protein 29 antibody

UniProt: [Q96FG2](#)

Application Details

Application Notes: Recommended dilution: WB:1:500-1:5000, IHC:1:500-1:1000, IF:1:50-1:200,

Restrictions: For Research Use only

Handling

Format: Liquid

Buffer: Preservative: 0.03 % Proclin 300
Constituents: 50 % Glycerol, 0.01M PBS, pH 7.4

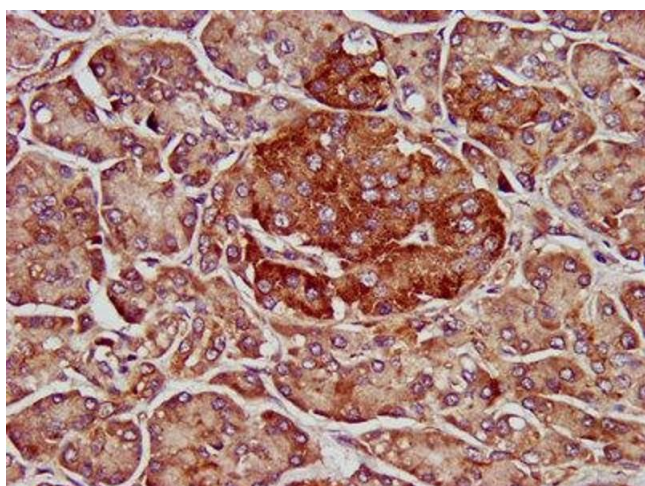
Preservative: ProClin

Precaution of Use: This product contains ProClin: a POISONOUS AND HAZARDOUS SUBSTANCE which should be handled by trained staff only.

Storage: -20 °C,-80 °C

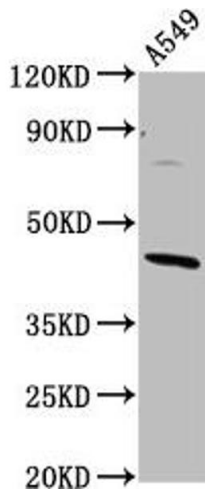
Storage Comment: Upon receipt, store at -20°C or -80°C. Avoid repeated freeze.

Images



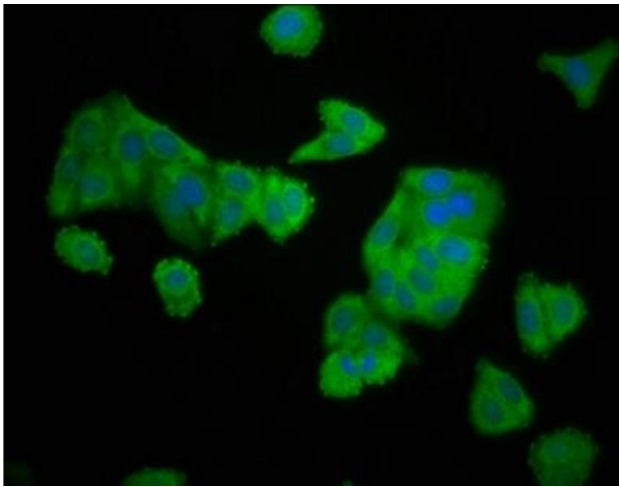
Immunohistochemistry

Image 1. IHC image of ABIN7151530 diluted at 1:500 and staining in paraffin-embedded human pancreatic tissue performed on a Leica Bond™ system. After dewaxing and hydration, antigen retrieval was mediated by high pressure in a citrate buffer (pH 6.0). Section was blocked with 10% normal goat serum 30min at RT. Then primary antibody (1% BSA) was incubated at 4°C overnight. The primary is detected by a biotinylated secondary antibody and visualized using an HRP conjugated SP system.



Western Blotting

Image 2. Western Blot Positive WB detected in: A549 whole cell lysate All lanes: ELMOD3 antibody at 4.3 µg/mL Secondary Goat polyclonal to rabbit IgG at 1/50000 dilution Predicted band size: 44, 29, 19, 21, 45 kDa Observed band size: 44 kDa



Immunofluorescence

Image 3. Immunofluorescence staining of HepG2 cells with ABIN7151530 at 1:166, counter-stained with DAPI. The cells were fixed in 4% formaldehyde, permeabilized using 0.2% Triton X-100 and blocked in 10% normal Goat Serum. The cells were then incubated with the antibody overnight at 4°C. The secondary antibody was Alexa Fluor 488-conjugated AffiniPure Goat Anti-Rabbit IgG(H+L).

Please check the [product details page](#) for more images. Overall 4 images are available for ABIN7151530.