



[Go to Product page](#)

Datasheet for ABIN7151538
anti-EEF1A2 antibody (AA 184-463)

2 Images

Overview

Quantity:	100 µL
Target:	EEF1A2
Binding Specificity:	AA 184-463
Reactivity:	Human
Host:	Rabbit
Clonality:	Polyclonal
Conjugate:	This EEF1A2 antibody is un-conjugated
Application:	Western Blotting (WB), ELISA, Immunohistochemistry (IHC)

Product Details

Immunogen:	Recombinant Human Elongation factor 1-alpha 2 protein (184-463AA)
Isotype:	IgG
Cross-Reactivity:	Human
Purification:	Antigen Affinity Purified

Target Details

Target:	EEF1A2
Alternative Name:	EEF1A2 (EEF1A2 Products)
Background:	Background: This protein promotes the GTP-dependent binding of aminoacyl-tRNA to the A-site of ribosomes during protein biosynthesis.

Target Details

Aliases: eEF1A-2 antibody, Eef1a2 antibody, EEF1AL antibody, EF 1 alpha 2 antibody, EF-1-alpha-2 antibody, EF1A antibody, EF1A2_HUMAN antibody, Elongation factor 1 A 2 antibody, Elongation factor 1 alpha antibody, Elongation factor 1 alpha 2 antibody, Elongation factor 1-alpha 2 antibody, Eukaryotic elongation factor 1 A-2 antibody, Eukaryotic translation elongation factor 1 alpha 2 antibody, FLJ41696 antibody, HS1 antibody, OTTHUMP00000031776 antibody, Statin like antibody, Statin S1 antibody, Statin-S1 antibody, STN antibody, STNL antibody

UniProt: [Q05639](#)

Application Details

Application Notes: Recommended dilution: WB:1:1000-1:5000, IHC:1:20-1:200,

Restrictions: For Research Use only

Handling

Format: Liquid

Buffer: PBS with 0.02 % sodium azide, 50 % glycerol, pH 7.3.

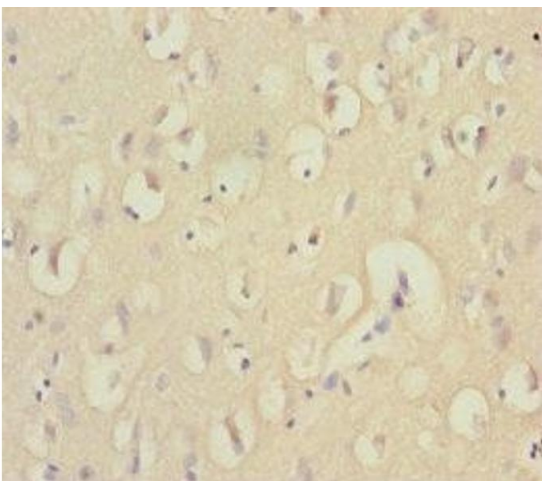
Preservative: Sodium azide

Precaution of Use: This product contains Sodium azide: a POISONOUS AND HAZARDOUS SUBSTANCE which should be handled by trained staff only.

Storage: -20 °C,-80 °C

Storage Comment: Upon receipt, store at -20°C or -80°C. Avoid repeated freeze.

Images



Immunohistochemistry

Image 1. Immunohistochemistry of paraffin-embedded human brain tissue using ABIN7151538 at dilution of 1:100



Western Blotting

Image 2. Western blot All lanes: EEF1A2 antibody at 2.23 μ g/mL Lane 1: MCF-7 whole cell lysate Lane 2: Hela whole cell lysate Lane 3: Raji whole cell lysate Secondary Goat polyclonal to rabbit IgG at 1/10000 dilution Predicted band size: 50 kDa Observed band size: 50 kDa