

Datasheet for ABIN7151576
anti-ELP2 antibody (AA 323-457)[Go to Product page](#)

3 Images

Overview

Quantity:	100 µg
Target:	ELP2
Binding Specificity:	AA 323-457
Reactivity:	Human
Host:	Rabbit
Clonality:	Polyclonal
Conjugate:	This ELP2 antibody is un-conjugated
Application:	ELISA, Immunohistochemistry (IHC), Immunofluorescence (IF)

Product Details

Immunogen:	Recombinant Human Elongator complex protein 2 protein (323-457AA)
Isotype:	IgG
Cross-Reactivity:	Human
Purification:	>95%, Protein G purified

Target Details

Target:	ELP2
Alternative Name:	ELP2 (ELP2 Products)
Background:	Background: Regulates the ligand-dependent activation of STAT3. Aliases: AU023723 antibody, Elongation protein 2 homolog (S. cerevisiae) antibody, Elongator

Target Details

acetyltransferase complex subunit 2 antibody, Elongator complex protein 2 antibody, elongator protein 2 antibody, ELP2 antibody, ELP2_HUMAN antibody, Epl2 antibody, FLJ10879 antibody, SHINC 2 antibody, SHINC-2 antibody, SHINC2 antibody, signal transducer and activator of transcription 3 interacting protein 1 antibody, signal transducer and activator of transcription interacting protein 1 antibody, STAT3 interacting protein 1 antibody, Stat3 interacting protein antibody, STAT3-interacting protein 1 antibody, STATIP 1 antibody, STATIP1 antibody, STATIP1 protein antibody, StIP antibody, StIP1 antibody

UniProt: [Q6IA86](#)

Pathways: [Stem Cell Maintenance](#), [Positive Regulation of Endopeptidase Activity](#), [Protein targeting to Nucleus](#)

Application Details

Application Notes: Recommended dilution: IHC:1:500-1:1000, IF:1:50-1:200,

Restrictions: For Research Use only

Handling

Format: Liquid

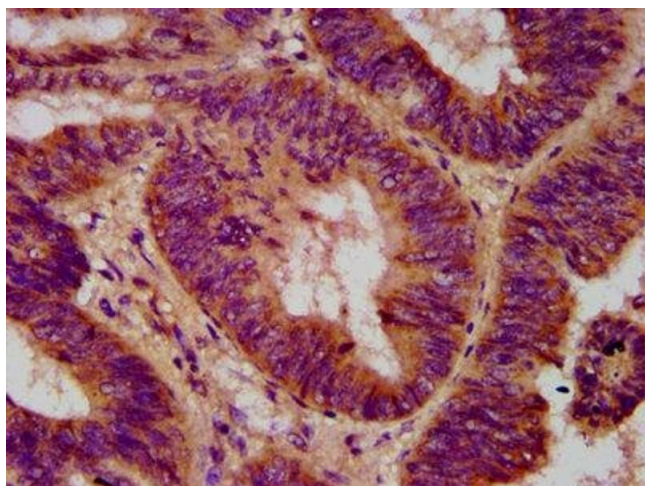
Buffer: Preservative: 0.03 % Proclin 300
Constituents: 50 % Glycerol, 0.01M PBS, pH 7.4

Preservative: ProClin

Precaution of Use: This product contains ProClin: a POISONOUS AND HAZARDOUS SUBSTANCE which should be handled by trained staff only.

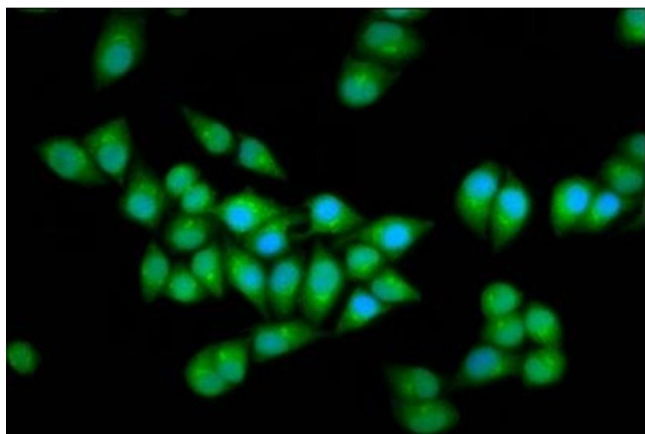
Storage: -20 °C, -80 °C

Storage Comment: Upon receipt, store at -20°C or -80°C. Avoid repeated freeze.



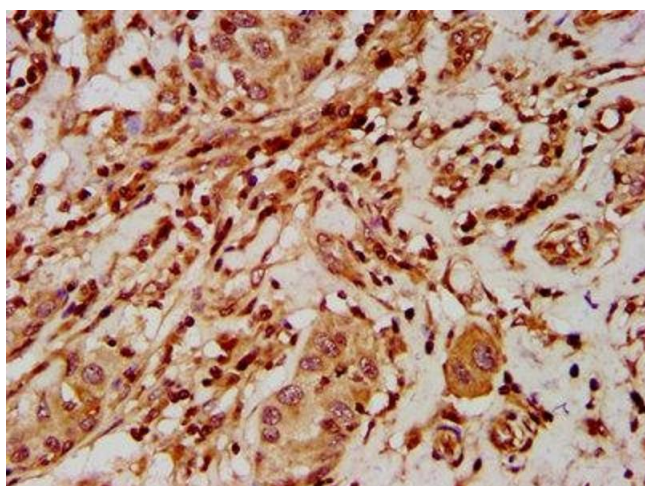
Immunohistochemistry

Image 1. IHC image of ABIN7151576 diluted at 1:500 and staining in paraffin-embedded human colon cancer performed on a Leica Bond™ system. After dewaxing and hydration, antigen retrieval was mediated by high pressure in a citrate buffer (pH 6.0). Section was blocked with 10% normal goat serum 30min at RT. Then primary antibody (1% BSA) was incubated at 4°C overnight. The primary is detected by a biotinylated secondary antibody and visualized using an HRP conjugated SP system.



Immunofluorescence

Image 2. Immunofluorescence staining of HeLa cells with ABIN7151576 at 1:166, counter-stained with DAPI. The cells were fixed in 4% formaldehyde, permeabilized using 0.2% Triton X-100 and blocked in 10% normal Goat Serum. The cells were then incubated with the antibody overnight at 4°C. The secondary antibody was Alexa Fluor 488-conjugated AffiniPure Goat Anti-Rabbit IgG(H+L).



Immunohistochemistry

Image 3. IHC image of ABIN7151576 diluted at 1:500 and staining in paraffin-embedded human liver cancer performed on a Leica Bond™ system. After dewaxing and hydration, antigen retrieval was mediated by high pressure in a citrate buffer (pH 6.0). Section was blocked with 10% normal goat serum 30min at RT. Then primary antibody (1% BSA) was incubated at 4°C overnight. The primary is detected by a biotinylated secondary antibody and visualized using an HRP conjugated SP system.