



[Go to Product page](#)

Datasheet for ABIN7151584
anti-ELP4 antibody (AA 117-223)

3 Images

Overview

Quantity:	100 µg
Target:	ELP4
Binding Specificity:	AA 117-223
Reactivity:	Human
Host:	Rabbit
Clonality:	Polyclonal
Conjugate:	This ELP4 antibody is un-conjugated
Application:	ELISA, Immunohistochemistry (IHC), Immunofluorescence (IF)

Product Details

Immunogen:	Recombinant Human Elongator complex protein 4 protein (117-223AA)
Isotype:	IgG
Cross-Reactivity:	Human
Purification:	>95%, Protein G purified

Target Details

Target:	ELP4
Alternative Name:	ELP4 (ELP4 Products)
Background:	Background: Acts as subunit of the RNA polymerase II elongator complex, which is a histone acetyltransferase component of the RNA polymerase II (Pol II) holoenzyme and is involved in

Target Details

transcriptional elongation. Elongator may play a role in chromatin remodeling and is involved in acetylation of histones H3 and probably H4.

Aliases: C11orf19 antibody, dJ68P15A.1 antibody, elongation protein 4 homolog (*S. cerevisiae*) antibody, Elongation protein 4 homolog antibody, Elongator complex protein 4 antibody, ELP4 antibody, ELP4_HUMAN antibody, FLJ20498 antibody, hELP4 antibody, PAX6 neighbor gene protein antibody, PAX6NEB antibody, PAXNEB antibody

UniProt: [Q96EB1](#)

Application Details

Application Notes: Recommended dilution: IHC:1:500-1:1000, IF:1:200-1:500,

Restrictions: For Research Use only

Handling

Format: Liquid

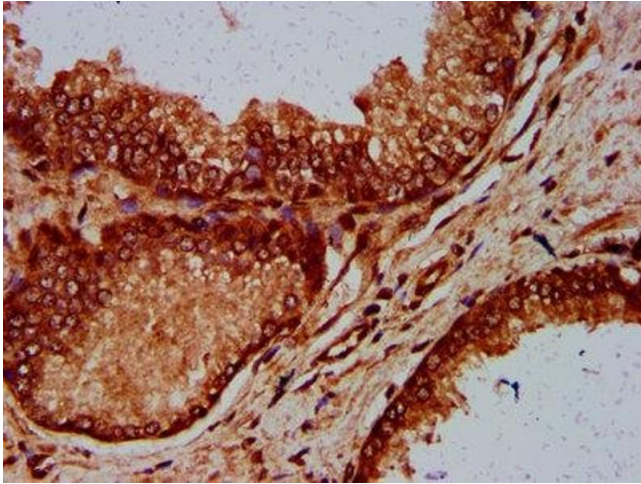
Buffer: Preservative: 0.03 % Proclin 300
Constituents: 50 % Glycerol, 0.01M PBS, pH 7.4

Preservative: ProClin

Precaution of Use: This product contains ProClin: a POISONOUS AND HAZARDOUS SUBSTANCE which should be handled by trained staff only.

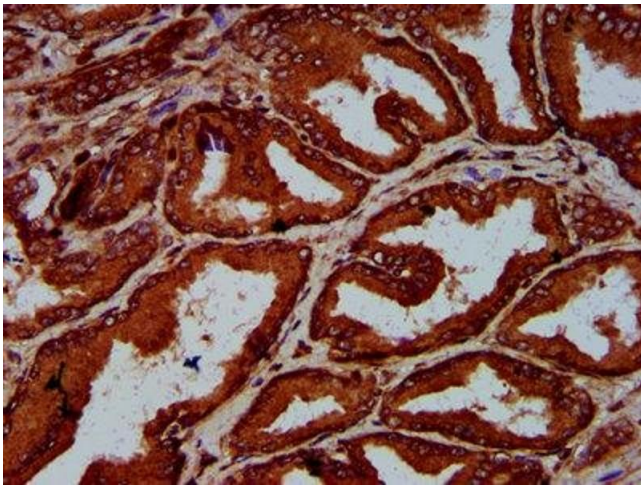
Storage: -20 °C,-80 °C

Storage Comment: Upon receipt, store at -20°C or -80°C. Avoid repeated freeze.



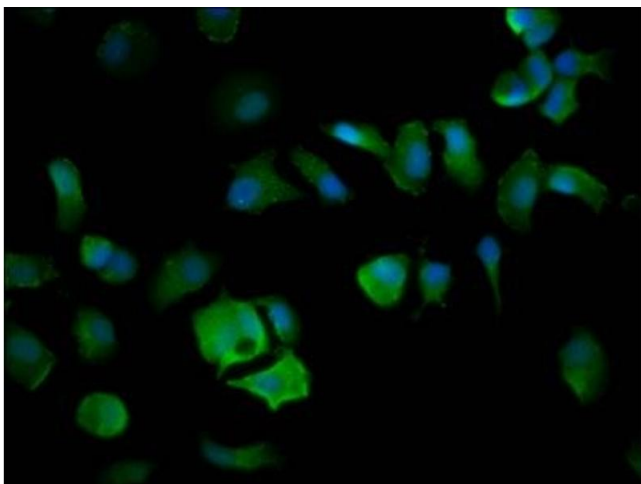
Immunohistochemistry

Image 1. IHC image of ABIN7151584 diluted at 1:600 and staining in paraffin-embedded human prostate cancer performed on a Leica Bond™ system. After dewaxing and hydration, antigen retrieval was mediated by high pressure in a citrate buffer (pH 6.0). Section was blocked with 10% normal goat serum 30min at RT. Then primary antibody (1% BSA) was incubated at 4°C overnight. The primary is detected by a biotinylated secondary antibody and visualized using an HRP conjugated SP system.



Immunohistochemistry

Image 2. IHC image of ABIN7151584 diluted at 1:600 and staining in paraffin-embedded human prostate tissue performed on a Leica Bond™ system. After dewaxing and hydration, antigen retrieval was mediated by high pressure in a citrate buffer (pH 6.0). Section was blocked with 10% normal goat serum 30min at RT. Then primary antibody (1% BSA) was incubated at 4°C overnight. The primary is detected by a biotinylated secondary antibody and visualized using an HRP conjugated SP system.



Immunofluorescence

Image 3. Immunofluorescence staining of MCF-7 cells with ABIN7151584 at 1:200, counter-stained with DAPI. The cells were fixed in 4% formaldehyde, permeabilized using 0.2% Triton X-100 and blocked in 10% normal Goat Serum. The cells were then incubated with the antibody overnight at 4°C. The secondary antibody was Alexa Fluor 488-conjugated AffiniPure Goat Anti-Rabbit IgG(H+L).