



[Go to Product page](#)

Datasheet for ABIN7151602  
**anti-ESRG antibody (AA 1-222)**

1 Image

Overview

Quantity:	100 µg
Target:	ESRG
Binding Specificity:	AA 1-222
Reactivity:	Human
Host:	Rabbit
Clonality:	Polyclonal
Conjugate:	This ESRG antibody is un-conjugated
Application:	ELISA, Immunohistochemistry (IHC)

Product Details

Immunogen:	Recombinant Human Embryonic stem cell-related gene protein (1-222AA)
Isotype:	IgG
Cross-Reactivity:	Human
Purification:	>95%, Protein G purified

Target Details

Target:	ESRG
Alternative Name:	ESRG ( <a href="#">ESRG Products</a> )
Background:	Background: nucleus Aliases: ESRG antibody, HESRG antibody, Embryonic stem cell-related gene protein antibody,

## Target Details

hES cell-related gene protein antibody

UniProt: [Q1W209](#)

## Application Details

Application Notes: Recommended dilution: IHC:1:20-1:200,

Restrictions: For Research Use only

## Handling

Format: Liquid

Buffer: Preservative: 0.03 % Proclin 300  
Constituents: 50 % Glycerol, 0.01M PBS, PH 7.4

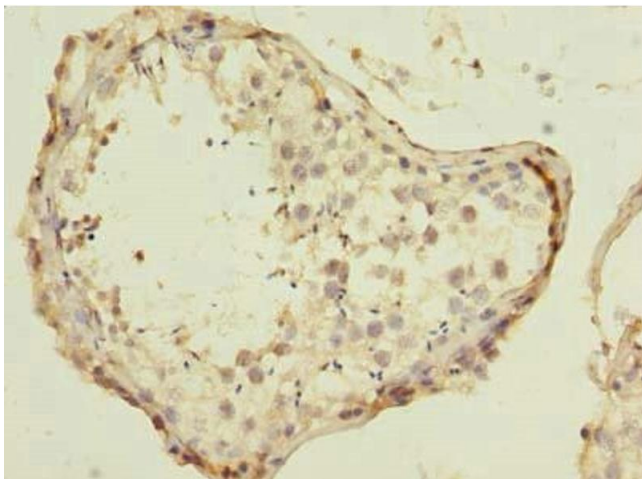
Preservative: ProClin

Precaution of Use: This product contains ProClin: a POISONOUS AND HAZARDOUS SUBSTANCE which should be handled by trained staff only.

Storage: -20 °C,-80 °C

Storage Comment: Upon receipt, store at -20°C or -80°C. Avoid repeated freeze.

## Images



### Immunohistochemistry

**Image 1.** Immunohistochemistry of paraffin-embedded human testis tissue using ABIN7151602 at dilution of 1:100