

Datasheet for ABIN7151606
anti-Emerin antibody (AA 1-222)

5 Images

[Go to Product page](#)

Overview

Quantity:	100 µg
Target:	Emerin (EMD)
Binding Specificity:	AA 1-222
Reactivity:	Human
Host:	Rabbit
Clonality:	Polyclonal
Conjugate:	This Emerin antibody is un-conjugated
Application:	Western Blotting (WB), ELISA, Immunofluorescence (IF), Immunohistochemistry (IHC), Immunoprecipitation (IP)

Product Details

Immunogen:	Recombinant Human Emerin protein (1-222AA)
Isotype:	IgG
Cross-Reactivity:	Human, Mouse
Purification:	>95%, Protein G purified

Target Details

Target:	Emerin (EMD)
Alternative Name:	EMD (EMD Products)
Background:	Background: Stabilizes and promotes the formation of a nuclear actin cortical network.

Target Details

Stimulates actin polymerization in vitro by binding and stabilizing the pointed end of growing filaments. Inhibits beta-catenin activity by preventing its accumulation in the nucleus. Acts by influencing the nuclear accumulation of beta-catenin through a CRM1-dependent export pathway. Links centrosomes to the nuclear envelope via a microtubule association. EMD and BAF are cooperative cofactors of HIV-1 infection. Association of EMD with the viral DNA requires the presence of BAF and viral integrase. The association of viral DNA with chromatin requires the presence of BAF and EMD. Required for proper localization of non-farnesylated prelamin-A/C.

Aliases: EDMD antibody, Emd antibody, EMD_HUMAN antibody, Emerin antibody, Emery Dreifuss muscular dystrophy antibody, STA antibody

UniProt: [P50402](#)

Application Details

Application Notes: Recommended dilution: WB:1:500-1:5000, IHC:1:20-1:200, IF:1:50-1:200, IP:1:200-1:2000,

Restrictions: For Research Use only

Handling

Format: Liquid

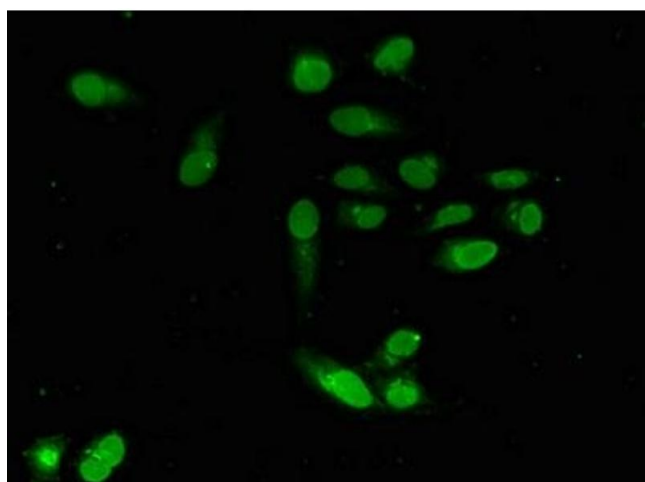
Buffer: Preservative: 0.03 % Proclin 300
Constituents: 50 % Glycerol, 0.01M PBS, pH 7.4

Preservative: ProClin

Precaution of Use: This product contains ProClin: a POISONOUS AND HAZARDOUS SUBSTANCE which should be handled by trained staff only.

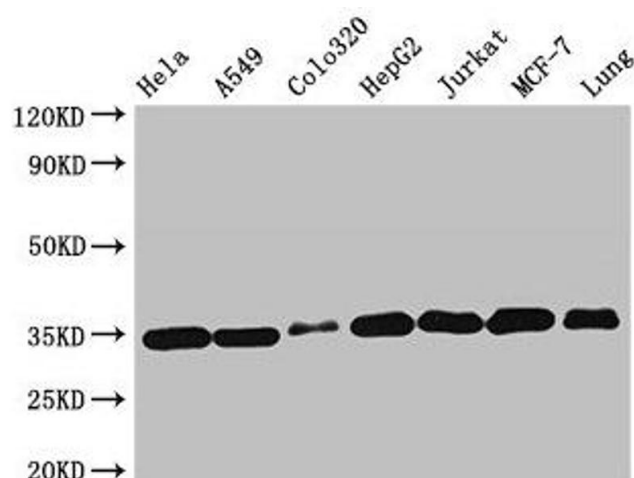
Storage: -20 °C, -80 °C

Storage Comment: Upon receipt, store at -20°C or -80°C. Avoid repeated freeze.



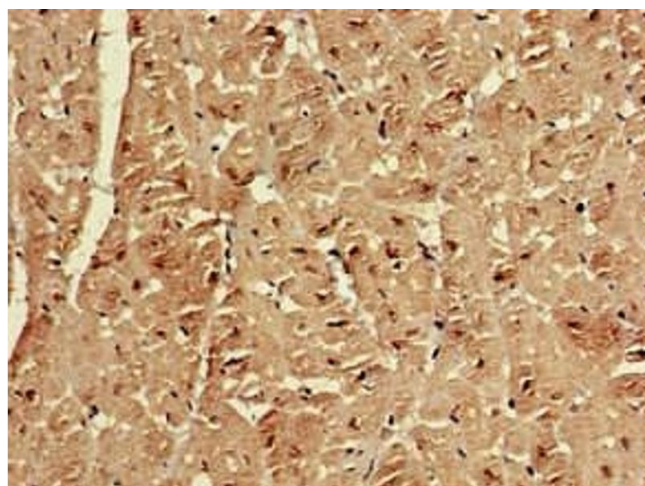
Immunofluorescence

Image 1. Immunofluorescent analysis of HeLa cells using ABIN7151606 at dilution of 1:100 and Alexa Fluor 488-conjugated AffiniPure Goat Anti-Rabbit IgG(H+L)



Western Blotting

Image 2. Western Blot Positive WB detected in: HeLa whole cell lysate, A549 whole cell lysate, Colo320 whole cell lysate, HepG2 whole cell lysate, Jurkat whole cell lysate, MCF-7 whole cell lysate, Mouse lung tissue All lanes: EMD antibody at 2 µg/mL Secondary Goat polyclonal to rabbit IgG at 1/50000 dilution Predicted band size: 29 kDa Observed band size: 35 kDa



Immunohistochemistry

Image 3. Immunohistochemistry of paraffin-embedded human heart tissue using ABIN7151606 at dilution of 1:100

Please check the [product details page](#) for more images. Overall 5 images are available for ABIN7151606.