



[Go to Product page](#)

Datasheet for ABIN7151610  
**anti-Emilin1 antibody (AA 1-347)**

1 Image

Overview

Quantity:	100 µg
Target:	Emilin1 (EMILIN1)
Binding Specificity:	AA 1-347
Reactivity:	Human
Host:	Rabbit
Clonality:	Polyclonal
Conjugate:	This Emilin1 antibody is un-conjugated
Application:	Immunohistochemistry (IHC), ELISA

Product Details

Immunogen:	Recombinant Human EMILIN-1 protein (1-347AA)
Isotype:	IgG
Cross-Reactivity:	Human
Purification:	>95%, Protein G purified

Target Details

Target:	Emilin1 (EMILIN1)
Alternative Name:	EMILIN1 ( <a href="#">EMILIN1 Products</a> )
Background:	Background: May be responsible for anchoring smooth muscle cells to elastic fibers, and may be involved not only in the formation of the elastic fiber, but also in the processes that regulate

## Target Details

vessel assembly. Has cell adhesive capacity.

Aliases: Elastin microfibril interface located protein 1 antibody, Elastin microfibril interface located protein antibody, Elastin microfibril interface-located protein 1 antibody, Elastin microfibril interfacer 1 antibody, EMIL1\_HUMAN antibody, EMILIN 1 antibody, EMILIN antibody, EMILIN-1 antibody, Emilin1 antibody, gp115 antibody

UniProt: [Q9Y6C2](#)

## Application Details

Application Notes: Recommended dilution: IHC:1:20-1:200,

Restrictions: For Research Use only

## Handling

Format: Liquid

Buffer: Preservative: 0.03 % Proclin 300  
Constituents: 50 % Glycerol, 0.01M PBS, PH 7.4

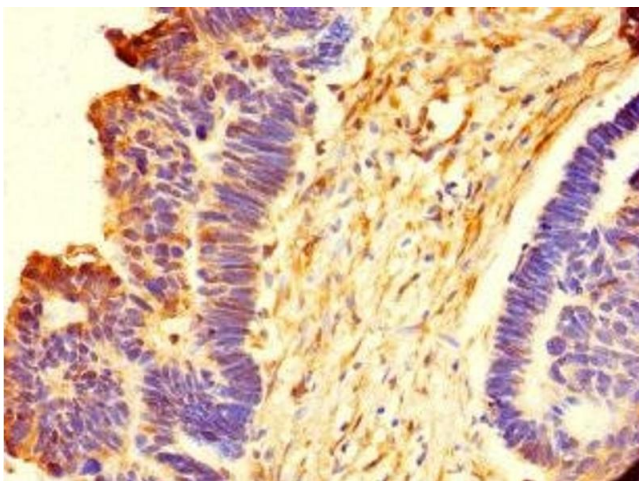
Preservative: ProClin

Precaution of Use: This product contains ProClin: a POISONOUS AND HAZARDOUS SUBSTANCE which should be handled by trained staff only.

Storage: -20 °C,-80 °C

Storage Comment: Upon receipt, store at -20°C or -80°C. Avoid repeated freeze.

## Images



### Immunohistochemistry

**Image 1.** Immunohistochemistry of paraffin-embedded human ovarian tissue using ABIN7151610 at dilution of 1:100