



[Go to Product page](#)

Datasheet for ABIN7151614  
**anti-EML4 antibody (AA 1-62)**

1 Image

### Overview

Quantity:	100 µg
Target:	EML4
Binding Specificity:	AA 1-62
Reactivity:	Human
Host:	Rabbit
Clonality:	Polyclonal
Conjugate:	This EML4 antibody is un-conjugated
Application:	Western Blotting (WB), ELISA

### Product Details

Immunogen:	Recombinant Human EML4 protein (1-62AA)
Isotype:	IgG
Cross-Reactivity:	Human
Purification:	>95%, Protein G purified

### Target Details

Target:	EML4
Alternative Name:	EML4 ( <a href="#">EML4 Products</a> )
Background:	Background: May modify the assembly dynamics of microtubules, such that microtubules are slightly longer, but more dynamic.

## Target Details

Aliases: Echinoderm microtubule-associated protein-like 4 (EMAP-4) (Restrictedly overexpressed proliferation-associated protein) (Ropp 120), EML4, C2orf2 EMAPL4

UniProt: [Q96HE3](#)

## Application Details

Application Notes: Recommended dilution: WB:1:500-1:5000,

Restrictions: For Research Use only

## Handling

Format: Liquid

Buffer: Preservative: 0.03 % Proclin 300  
Constituents: 50 % Glycerol, 0.01M PBS, pH 7.4

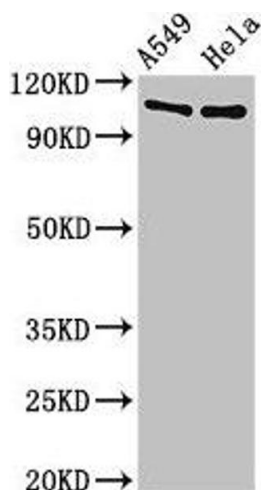
Preservative: ProClin

Precaution of Use: This product contains ProClin: a POISONOUS AND HAZARDOUS SUBSTANCE which should be handled by trained staff only.

Storage: -20 °C,-80 °C

Storage Comment: Upon receipt, store at -20°C or -80°C. Avoid repeated freeze.

## Images



### Western Blotting

**Image 1.** Western Blot Positive WB detected in: A549 whole cell lysate, HeLa whole cell lysate All lanes: EML4 antibody at 3 µg/mL Secondary Goat polyclonal to rabbit IgG at 1/50000 dilution Predicted band size: 109, 103 kDa Observed band size: 109 kDa