



[Go to Product page](#)

Datasheet for ABIN7151631

anti-Endonuclease G antibody (AA 49-297)

1 Image

Overview

Quantity:	100 µg
Target:	Endonuclease G (ENDOG)
Binding Specificity:	AA 49-297
Reactivity:	Human
Host:	Rabbit
Clonality:	Polyclonal
Conjugate:	This Endonuclease G antibody is un-conjugated
Application:	Western Blotting (WB), ELISA

Product Details

Immunogen:	Recombinant Human Endonuclease G, mitochondrial protein (49-297AA)
Isotype:	IgG
Cross-Reactivity:	Human, Mouse
Purification:	>95%, Protein G purified

Target Details

Target:	Endonuclease G (ENDOG)
Alternative Name:	ENDOG (ENDOG Products)
Background:	Background: Cleaves DNA at double-stranded (DG) _n (DC) _n and at single-stranded (DC) _n tracts. In addition to deoxyribonuclease activities, also has ribonuclease (RNase) and RNase H

Target Details

activities. Capable of generating the RNA primers required by DNA polymerase gamma to initiate replication of mitochondrial DNA (By similarity).

Aliases: ENDOG antibody, Endonuclease G antibody, mitochondrial antibody, Endo G antibody, EC 3.1.30.- antibody

UniProt: [Q14249](#)

Pathways: [Apoptosis](#)

Application Details

Application Notes: Recommended dilution: WB:1:500-1:5000,

Restrictions: For Research Use only

Handling

Format: Liquid

Buffer: Preservative: 0.03 % Proclin 300
Constituents: 50 % Glycerol, 0.01M PBS, pH 7.4

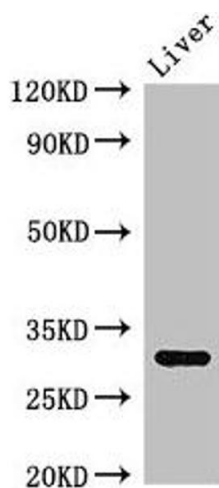
Preservative: ProClin

Precaution of Use: This product contains ProClin: a POISONOUS AND HAZARDOUS SUBSTANCE which should be handled by trained staff only.

Storage: -20 °C,-80 °C

Storage Comment: Upon receipt, store at -20°C or -80°C. Avoid repeated freeze.

Images



Western Blotting

Image 1. Western Blot Positive WB detected in: Mouse liver tissue All lanes: ENDOG antibody at 2.7 µg/mL Secondary Goat polyclonal to rabbit IgG at 1/50000 dilution Predicted band size: 33 kDa Observed band size: 33 kDa