



[Go to Product page](#)

Datasheet for ABIN7151639
anti-SH3G2 antibody (AA 1-270)

1 Image

Overview

Quantity:	100 µL
Target:	SH3G2
Binding Specificity:	AA 1-270
Reactivity:	Human
Host:	Rabbit
Clonality:	Polyclonal
Conjugate:	This SH3G2 antibody is un-conjugated
Application:	ELISA, Immunohistochemistry (IHC)

Product Details

Immunogen:	Recombinant Human Endophilin-A1 protein (1-270AA)
Isotype:	IgG
Cross-Reactivity:	Human
Purification:	Antigen Affinity Purified

Target Details

Target:	SH3G2
Alternative Name:	SH3GL2 (SH3G2 Products)
Background:	Background: Implicated in synaptic vesicle endocytosis. May recruit other proteins to membranes with high curvature.

Target Details

Aliases: bA335L15.1 (SH3 domain GRB2 like 2) antibody, CNSA2 antibody, EEN B1 antibody, EEN-B1 antibody, Endophilin 1 antibody, Endophilin A1 antibody, Endophilin A1 BAR domain antibody, Endophilin-1 antibody, Endophilin-A1 antibody, FLJ20276 antibody, FLJ25015 antibody, OTTHUMP00000021084 antibody, SH3 domain containing GRB2 like protein 2 antibody, SH3 domain GRB2 like 2 antibody, SH3 domain protein 2A antibody, SH3 domain-containing GRB2-like protein 2 antibody, SH3D2A antibody, SH3G2_HUMAN antibody, Sh3gl2 antibody, Sh3p4 antibody, SH3PA antibody

UniProt: [Q99962](#)

Pathways: [Neurotrophin Signaling Pathway](#), [EGFR Downregulation](#)

Application Details

Application Notes: Recommended dilution: IHC:1:20-1:200,

Restrictions: For Research Use only

Handling

Format: Liquid

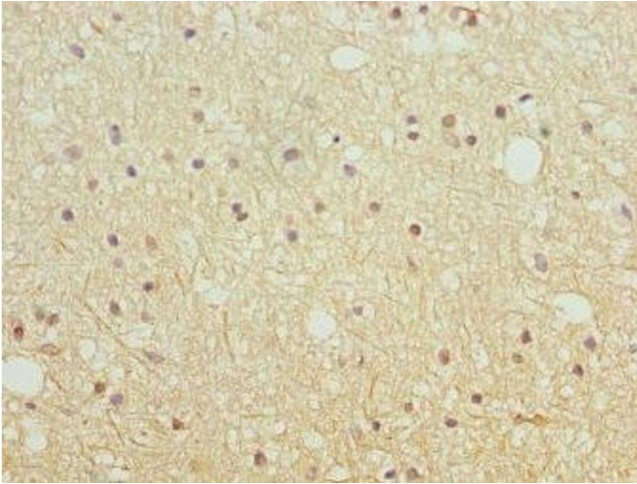
Buffer: PBS with 0.02 % sodium azide, 50 % glycerol, pH 7.3.

Preservative: Sodium azide

Precaution of Use: This product contains Sodium azide: a POISONOUS AND HAZARDOUS SUBSTANCE which should be handled by trained staff only.

Storage: -20 °C,-80 °C

Storage Comment: Upon receipt, store at -20°C or -80°C. Avoid repeated freeze.



Immunohistochemistry

Image 1. Immunohistochemistry of paraffin-embedded human brain tissue using ABIN7151639 at dilution of 1:100