

Datasheet for ABIN7151644
anti-SH3GLB1 antibody (AA 1-365)[Go to Product page](#)

1 Image

Overview

Quantity:	100 µg
Target:	SH3GLB1
Binding Specificity:	AA 1-365
Reactivity:	Human
Host:	Rabbit
Clonality:	Polyclonal
Conjugate:	This SH3GLB1 antibody is un-conjugated
Application:	ELISA, Immunofluorescence (IF)

Product Details

Immunogen:	Recombinant Human Endophilin-B1 protein (1-365AA)
Isotype:	IgG
Cross-Reactivity:	Human
Purification:	>95%, Protein G purified

Target Details

Target:	SH3GLB1
Alternative Name:	SH3GLB1 (SH3GLB1 Products)
Background:	Background: May be required for normal outer mitochondrial membrane dynamics (PubMed:15452144). Required for coatomer-mediated retrograde transport in certain cells. May

Target Details

recruit other proteins to membranes with high curvature. May promote membrane fusion (PubMed:11604418). Involved in activation of caspase-dependent apoptosis by promoting BAX/BAK1 activation (PubMed:16227588). Isoform 1 acts proapoptotic in fibroblasts. Involved in caspase-independent apoptosis during nutrition starvation and involved in the regulation of autophagy. Activates lipid kinase activity of PIK3C3 during autophagy probably by associating with the PI3K complex II (PI3KC3-C2) (PubMed:17891140). Associated with PI3KC3-C2 during autophagy may regulate the trafficking of ATG9A from the Golgi complex to the peripheral cytoplasm for the formation of autophagosomes by inducing Golgi membrane tubulation and fragmentation (PubMed:21068542). Involved in regulation of degradative endocytic trafficking and cytokinesis, probably in the context of PI3KC3-C2 (PubMed:20643123). Isoform 2 acts antiapoptotic in neuronal cells, involved in maintenance of mitochondrial morphology and promotes neuronal viability.

Aliases: Bax interacting factor 1 antibody, Bax-interacting factor 1 antibody, Bif 1 antibody, Bif antibody, Bif-1 antibody, CGI 61 antibody, dJ612B15.2 antibody, Endophilin B1 antibody, Endophilin-B1 antibody, PPP1R70 antibody, Protein phosphatase 1 regulatory subunit 70 antibody, SH3 containing protein SH3GLB1 antibody, SH3 domain GRB2 like endophilin B1 antibody, SH3 domain-containing GRB2-like protein B1 antibody, Sh3glb1 antibody, SH3p13 antibody, SHLB1_HUMAN antibody

UniProt: [Q9Y371](#)

Pathways: [Autophagy](#)

Application Details

Application Notes: Recommended dilution: IF:1:50-1:200,

Restrictions: For Research Use only

Handling

Format: Liquid

Buffer: Preservative: 0.03 % Proclin 300
Constituents: 50 % Glycerol, 0.01M PBS, PH 7.4

Preservative: ProClin

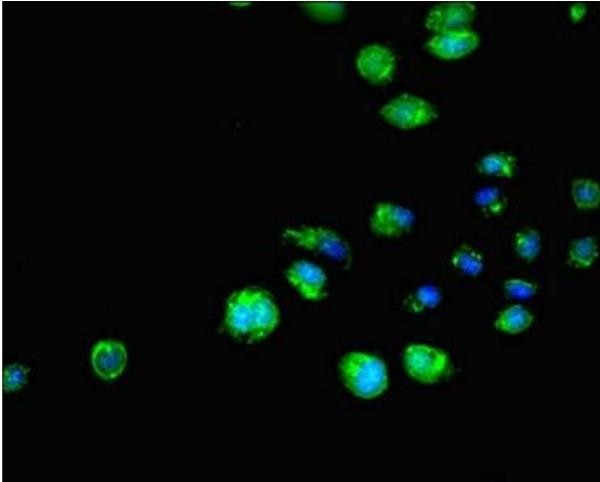
Precaution of Use: This product contains ProClin: a POISONOUS AND HAZARDOUS SUBSTANCE which should be handled by trained staff only.

Handling

Storage: -20 °C, -80 °C

Storage Comment: Upon receipt, store at -20°C or -80°C. Avoid repeated freeze.

Images



Immunofluorescence

Image 1. Immunofluorescent analysis of HepG2 cells using ABIN7151644 at dilution of 1:100 and Alexa Fluor 488-conjugated AffiniPure Goat Anti-Rabbit IgG(H+L)