



[Go to Product page](#)

Datasheet for ABIN7151649
anti-SH3GLB2 antibody (AA 1-250)

2 Images

Overview

Quantity:	100 µL
Target:	SH3GLB2
Binding Specificity:	AA 1-250
Reactivity:	Human
Host:	Rabbit
Clonality:	Polyclonal
Conjugate:	This SH3GLB2 antibody is un-conjugated
Application:	Western Blotting (WB), Immunohistochemistry (IHC), ELISA

Product Details

Immunogen:	Recombinant Human Endophilin-B2 protein (1-250AA)
Isotype:	IgG
Cross-Reactivity:	Human, Mouse
Purification:	Antigen Affinity Purified

Target Details

Target:	SH3GLB2
Alternative Name:	SH3GLB2 (SH3GLB2 Products)
Background:	Background: cytoplasm, nucleus Aliases: Endophilin B2 antibody, Endophilin-B2 antibody, OTTHUMP00000022320 antibody,

Target Details

PP6569 antibody, PP9455 antibody, Retinoid receptor induced gene 1 antibody, RRG1 antibody, SH3 containing protein SH3GLB2 antibody, SH3 domain GRB2 like endophilin B2 antibody, SH3 domain-containing GRB2-like protein B2 antibody, SH3GLB2 antibody, SHLB2_HUMAN antibody

UniProt: [Q9NR46](#)

Application Details

Application Notes: Recommended dilution: WB:1:1000-1:5000, IHC:1:20-1:200,

Restrictions: For Research Use only

Handling

Format: Liquid

Buffer: PBS with 0.02 % sodium azide, 50 % glycerol, pH 7.3.

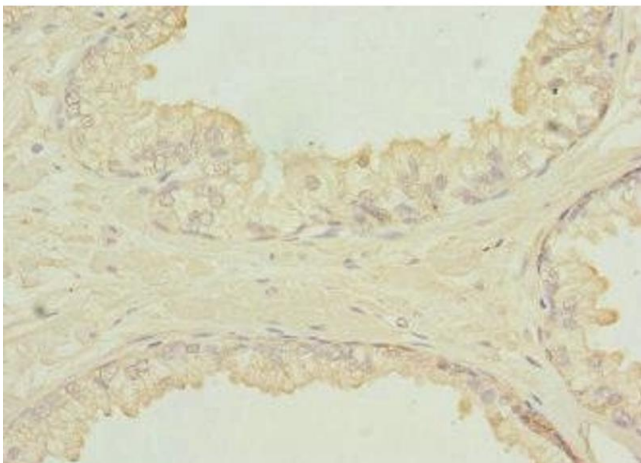
Preservative: Sodium azide

Precaution of Use: This product contains Sodium azide: a POISONOUS AND HAZARDOUS SUBSTANCE which should be handled by trained staff only.

Storage: -20 °C,-80 °C

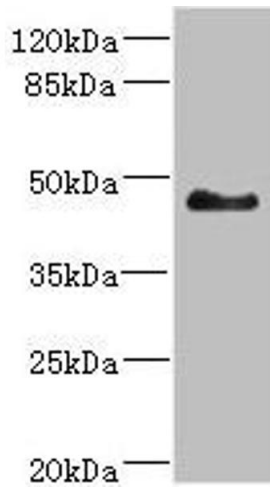
Storage Comment: Upon receipt, store at -20°C or -80°C. Avoid repeated freeze.

Images



Immunohistochemistry

Image 1. Immunohistochemistry of paraffin-embedded human prostate cancer using ABIN7151649 at dilution of 1:100



Western Blotting

Image 2. Western blot All lanes: SH3GLB2 antibody at 5.5 μ g/mL + Mouse liver tissue Secondary Goat polyclonal to rabbit IgG at 1/10000 dilution Predicted band size: 44, 45 kDa Observed band size: 44 kDa