



[Go to Product page](#)

Datasheet for ABIN7151651  
**anti-SH3GLB2 antibody (AA 1-395)**

2 Images

Overview

Quantity:	100 µg
Target:	SH3GLB2
Binding Specificity:	AA 1-395
Reactivity:	Human
Host:	Rabbit
Clonality:	Polyclonal
Conjugate:	This SH3GLB2 antibody is un-conjugated
Application:	Western Blotting (WB), Immunohistochemistry (IHC), ELISA

Product Details

Immunogen:	Recombinant Human Endophilin-B2 protein (1-395AA)
Isotype:	IgG
Cross-Reactivity:	Human, Mouse
Purification:	>95%, Protein G purified

Target Details

Target:	SH3GLB2
Alternative Name:	SH3GLB2 ( <a href="#">SH3GLB2 Products</a> )
Background:	Endophilin B2 antibody, Endophilin-B2 antibody, OTTHUMP00000022320 antibody, PP6569 antibody, PP9455 antibody, Retinoid receptor induced gene 1 antibody, RRG1 antibody, SH3

## Target Details

containing protein SH3GLB2 antibody, SH3 domain GRB2 like endophilin B2 antibody, SH3 domain-containing GRB2-like protein B2 antibody, SH3GLB2 antibody, SHLB2\_HUMAN antibody

UniProt: [Q9NR46](#)

## Application Details

Application Notes: Recommended dilution: WB:1:1000-1:5000, IHC:1:20-1:200,

Restrictions: For Research Use only

## Handling

Format: Liquid

Buffer: Preservative: 0.03 % Proclin 300  
Constituents: 50 % Glycerol, 0.01M PBS, PH 7.4

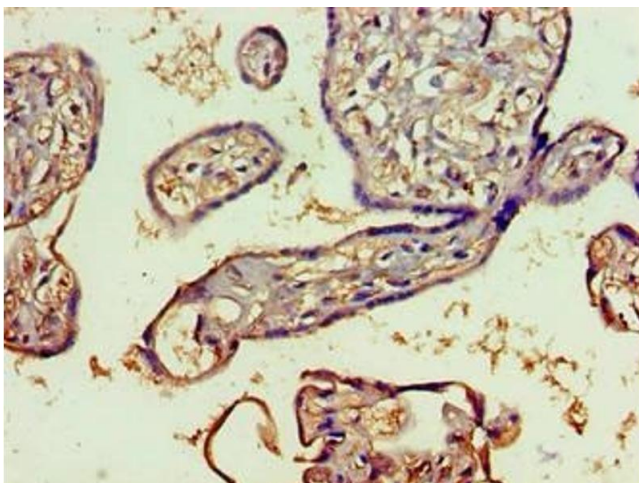
Preservative: ProClin

Precaution of Use: This product contains ProClin: a POISONOUS AND HAZARDOUS SUBSTANCE which should be handled by trained staff only.

Storage: -20 °C,-80 °C

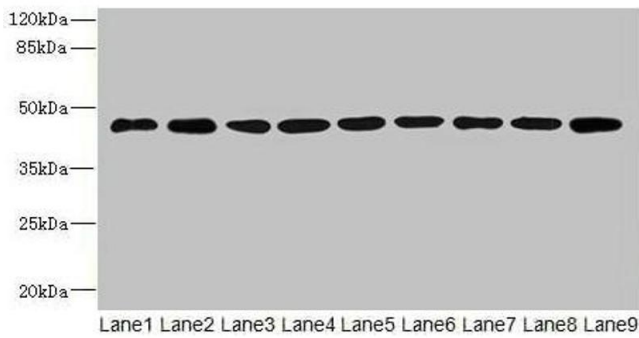
Storage Comment: Upon receipt, store at -20°C or -80°C. Avoid repeated freeze.

## Images



### Immunohistochemistry

**Image 1.** Immunohistochemistry of paraffin-embedded human placenta tissue using ABIN7151651 at dilution of 1:100



### Western Blotting

**Image 2.** Western blot All lanes: SH3GLB2 antibody at 1  $\mu$ g/mL Lane 1: Hela whole cell lysate Lane 2: Mouse gonadal tissue Lane 3: Mouse lung tissue Lane 4: U87 whole cell lysate Lane 5: THP-1 whole cell lysate Lane 6: A549 whole cell lysate Lane 7: MCF-7 whole cell lysate Lane 8: Mouse liver tissue Lane 9: A431 whole cell lysate Secondary Goat polyclonal to rabbit IgG at 1/10000 dilution Predicted band size: 44, 45 kDa Observed band size: 44 kDa