



[Go to Product page](#)

Datasheet for ABIN7151655
anti-ERAP1 antibody (AA 642-941)

4 Images

Overview

Quantity:	100 µg
Target:	ERAP1
Binding Specificity:	AA 642-941
Reactivity:	Human
Host:	Rabbit
Clonality:	Polyclonal
Conjugate:	This ERAP1 antibody is un-conjugated
Application:	Western Blotting (WB), ELISA, Immunohistochemistry (IHC), Immunofluorescence (IF)

Product Details

Immunogen:	Recombinant Human Endoplasmic reticulum aminopeptidase 1 protein (642-941AA)
Isotype:	IgG
Cross-Reactivity:	Human
Purification:	>95%, Protein G purified

Target Details

Target:	ERAP1
Alternative Name:	ERAP1 (ERAP1 Products)
Background:	Background: Aminopeptidase that plays a central role in peptide trimming, a step required for the generation of most HLA class I-binding peptides. Peptide trimming is essential to

Target Details

customize longer precursor peptides to fit them to the correct length required for presentation on MHC class I molecules. Strongly prefers substrates 9-16 residues long. Rapidly degrades 13-mer to a 9-mer and then stops. Preferentially hydrolyzes the residue Leu and peptides with a hydrophobic C-terminus, while it has weak activity toward peptides with charged C-terminus. May play a role in the inactivation of peptide hormones. May be involved in the regulation of blood pressure through the inactivation of angiotensin II and/or the generation of bradykinin in the kidney.

Aliases: A LAP antibody, A-LAP antibody, Adipocyte derived leucine aminopeptidase antibody, Adipocyte-derived leucine aminopeptidase antibody, ALAP antibody, Aminopeptidase PILS antibody, Aminopeptidase regulator of TNFR1 shedding antibody, APPILS antibody, ARTS 1 antibody, ARTS-1 antibody, Arts1 antibody, Endoplasmic reticulum aminopeptidase 1 antibody, Endoplasmic reticulum aminopeptidase associated with antigen processing antibody, ERAAP antibody, ERAAP1 antibody, ERAP 1 antibody, Erap1 antibody, ERAP1_HUMAN antibody, KIAA0525 antibody, kiaa0525 protein antibody, PILS AP antibody, PILS-AP antibody, PILSA antibody, PILSAP antibody, Puromycin insensitive leucyl specific aminopeptidase antibody, Puromycin-insensitive leucyl-specific aminopeptidase antibody, Type 1 tumor necrosis factor receptor shedding aminopeptidase regulator antibody, type 1 tumor necrosis factor receptors shedding aminopeptidase regulator antibody, VEGF-induced aminopeptidase antibody

UniProt: [Q9NZ08](#)

Application Details

Application Notes: Recommended dilution: WB:1:1000-1:5000, IHC:1:20-1:200, IF:1:50-1:200,

Restrictions: For Research Use only

Handling

Format: Liquid

Buffer: Preservative: 0.03 % Proclin 300
Constituents: 50 % Glycerol, 0.01M PBS, pH 7.4

Preservative: ProClin

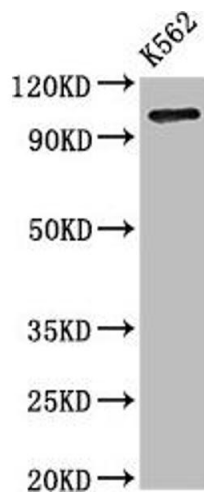
Precaution of Use: This product contains ProClin: a POISONOUS AND HAZARDOUS SUBSTANCE which should be handled by trained staff only.

Storage: -20 °C,-80 °C

Handling

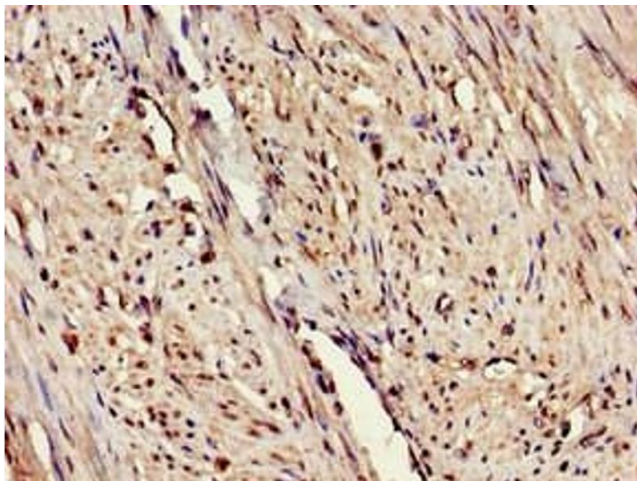
Storage Comment: Upon receipt, store at -20°C or -80°C. Avoid repeated freeze.

Images



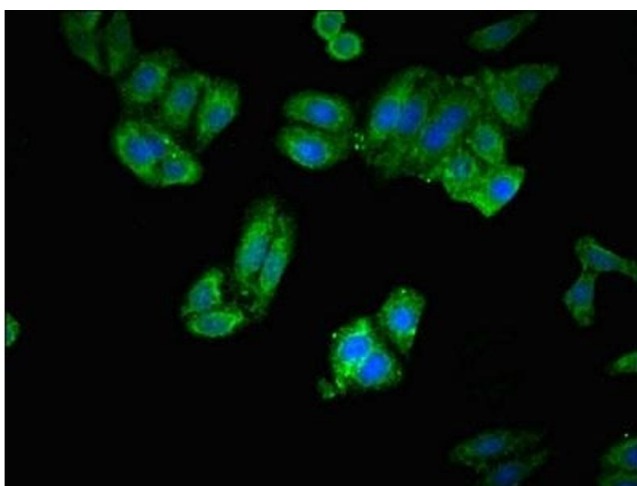
Western Blotting

Image 1. Western Blot Positive WB detected in: K562 whole cell lysate All lanes: ERAP1 antibody at 3.2 µg/mL Secondary Goat polyclonal to rabbit IgG at 1/50000 dilution Predicted band size: 108 kDa Observed band size: 108 kDa



Immunohistochemistry

Image 2. Immunohistochemistry of paraffin-embedded human endometrial cancer using ABIN7151655 at dilution of 1:100



Immunofluorescence

Image 3. Immunofluorescent analysis of HepG2 cells using ABIN7151655 at dilution of 1:100 and Alexa Fluor 488-conjugated AffiniPure Goat Anti-Rabbit IgG(H+L)

Please check the [product details page](#) for more images. Overall 4 images are available for ABIN7151655.