

Datasheet for ABIN7151659
anti-ERAP2 antibody (AA 406-522)[Go to Product page](#)

1 Image

Overview

Quantity:	100 µL
Target:	ERAP2
Binding Specificity:	AA 406-522
Reactivity:	Human
Host:	Rabbit
Clonality:	Polyclonal
Conjugate:	This ERAP2 antibody is un-conjugated
Application:	ELISA, Immunohistochemistry (IHC)

Product Details

Immunogen:	Recombinant Human Endoplasmic reticulum aminopeptidase 2 protein (406-522AA)
Isotype:	IgG
Cross-Reactivity:	Human
Purification:	>95%, Protein G purified

Target Details

Target:	ERAP2
Alternative Name:	ERAP2 (ERAP2 Products)
Background:	Background: Aminopeptidase that plays a central role in peptide trimming, a step required for the generation of most HLA class I-binding peptides. Peptide trimming is essential to

Target Details

customize longer precursor peptides to fit them to the correct length required for presentation on MHC class I molecules. Preferentially hydrolyzes the basic residues Arg and Lys.

Aliases: ERAP2 antibody, LRAPEndoplasmic reticulum aminopeptidase 2 antibody, EC 3.4.11.- antibody, Leukocyte-derived arginine aminopeptidase antibody, L-RAP antibody

UniProt: [Q6P179](#)

Application Details

Application Notes: Recommended dilution: IHC:1:200-1:500,

Restrictions: For Research Use only

Handling

Format: Liquid

Buffer: Preservative: 0.03 % Proclin 300
Constituents: 50 % Glycerol, 0.01M PBS, pH 7.4

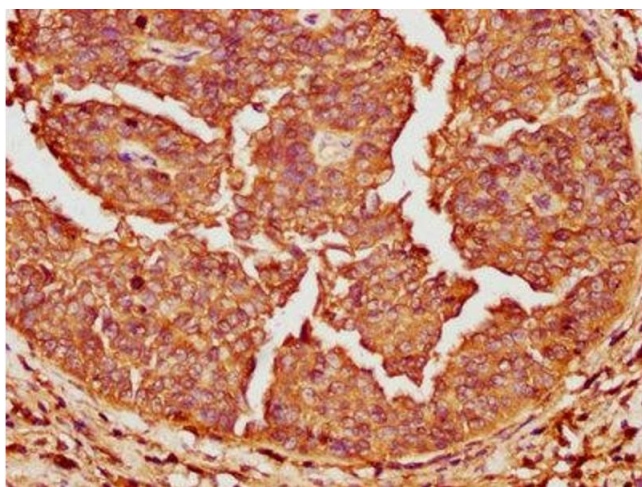
Preservative: ProClin

Precaution of Use: This product contains ProClin: a POISONOUS AND HAZARDOUS SUBSTANCE which should be handled by trained staff only.

Storage: -20 °C,-80 °C

Storage Comment: Upon receipt, store at -20°C or -80°C. Avoid repeated freeze.

Images



Immunohistochemistry

Image 1. IHC image of ABIN7151659 diluted at 1:200 and staining in paraffin-embedded human cervical cancer performed on a Leica Bond™ system. After dewaxing and hydration, antigen retrieval was mediated by high pressure in a citrate buffer (pH 6.0). Section was blocked with 10% normal goat serum 30min at RT. Then primary antibody (1% BSA) was incubated at 4°C overnight. The primary is detected by a biotinylated secondary antibody and visualized using an HRP conjugated SP system.