



[Go to Product page](#)

Datasheet for ABIN7151677  
**anti-ERP27 antibody (AA 26-273)**

1 Image

Overview

Quantity:	100 µg
Target:	ERP27
Binding Specificity:	AA 26-273
Reactivity:	Human
Host:	Rabbit
Clonality:	Polyclonal
Conjugate:	This ERP27 antibody is un-conjugated
Application:	ELISA, Immunohistochemistry (IHC)

Product Details

Immunogen:	Recombinant Human Endoplasmic reticulum resident protein 27 protein (26-273AA)
Isotype:	IgG
Cross-Reactivity:	Human
Purification:	>95%, Protein G purified

Target Details

Target:	ERP27
Alternative Name:	ERP27 ( <a href="#">ERP27 Products</a> )
Background:	C12orf46 antibody, Chromosome 12 open reading frame 46 antibody, Endoplasmic reticulum protein 27 antibody, Endoplasmic reticulum protein 27 kDa antibody, Endoplasmic reticulum

## Target Details

resident protein 27 antibody, Endoplasmic reticulum resident protein ERp27 antibody, ER protein 27 antibody, ERp 27 antibody, ERp27 antibody, ERP27\_HUMAN antibody, FLJ32115 antibody, PDIA8 antibody, Protein disulfide isomerase family A, member 8 antibody

UniProt: [Q96DN0](#)

## Application Details

Application Notes: Recommended dilution: IHC:1:20-1:200,

Restrictions: For Research Use only

## Handling

Format: Liquid

Buffer: Preservative: 0.03 % Proclin 300  
Constituents: 50 % Glycerol, 0.01M PBS, PH 7.4

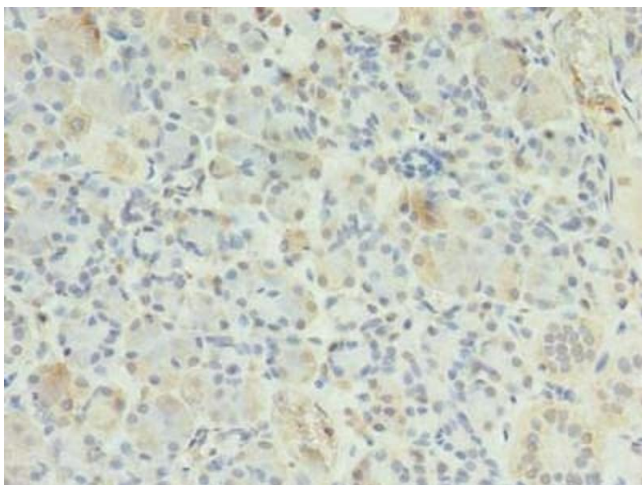
Preservative: ProClin

Precaution of Use: This product contains ProClin: a POISONOUS AND HAZARDOUS SUBSTANCE which should be handled by trained staff only.

Storage: -20 °C,-80 °C

Storage Comment: Upon receipt, store at -20°C or -80°C. Avoid repeated freeze.

## Images



### Immunohistochemistry

**Image 1.** Immunohistochemistry of paraffin-embedded human pancreatic tissue using ABIN7151677 at dilution of 1:100