



[Go to Product page](#)

Datasheet for ABIN7151681
anti-ERP29 antibody (AA 40-251)

2 Images

Overview

Quantity:	100 µg
Target:	ERP29
Binding Specificity:	AA 40-251
Reactivity:	Human
Host:	Rabbit
Clonality:	Polyclonal
Conjugate:	This ERP29 antibody is un-conjugated
Application:	Western Blotting (WB), ELISA, Immunohistochemistry (IHC)

Product Details

Immunogen:	Recombinant Human Endoplasmic reticulum resident protein 29 protein (40-251AA)
Isotype:	IgG
Cross-Reactivity:	Human
Purification:	>95%, Protein G purified

Target Details

Target:	ERP29
Alternative Name:	ERP29 (ERP29 Products)
Background:	Background: Proper protein folding and post-translational modifications are essential for secretory protein export out of the endoplasmic reticulum. This task is accomplished by

Target Details

chaperone proteins such as protein disulfide isomerase (PDI), GRP94, and BiP. A recently characterized protein, designated ERp29, is closely related to these chaperone proteins and appears to be upregulated during ER stress conditions. ERp29 is a soluble 259-residue protein that is localized to the lumen of the endoplasmic reticulum in all mammalian cells. Research has shown that there are two primary domains within ERp29. The first is the C-terminal region that is a novel, all helical, fold that is most likely involved with ERp29 retention to the ER. The second is the N-terminal region that resembles that of PDI's thioredoxin module. The protein shows sequence similarity to the protein disulfide isomerase family. However, it lacks the thioredoxin motif characteristic of this family, suggesting that this protein does not function as a disulfide isomerase. The protein dimerizes and is thought to play a role in the processing of secretory proteins within the ER.

Aliases: ERP29 antibody, C12orf8 antibody, ERP28Endoplasmic reticulum resident protein 29 antibody, ERp29 antibody, Endoplasmic reticulum resident protein 28 antibody, ERp28 antibody, Endoplasmic reticulum resident protein 31 antibody, ERp31 antibody

UniProt: [P30040](#)

Application Details

Application Notes: Recommended dilution: WB:1:1000-1:5000, IHC:1:20-1:200,

Restrictions: For Research Use only

Handling

Format: Liquid

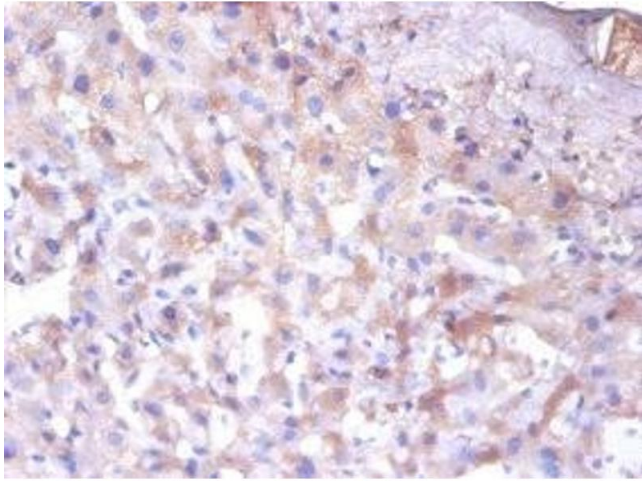
Buffer: Preservative: 0.03 % Proclin 300
Constituents: 50 % Glycerol, 0.01M PBS, PH 7.4

Preservative: ProClin

Precaution of Use: This product contains ProClin: a POISONOUS AND HAZARDOUS SUBSTANCE which should be handled by trained staff only.

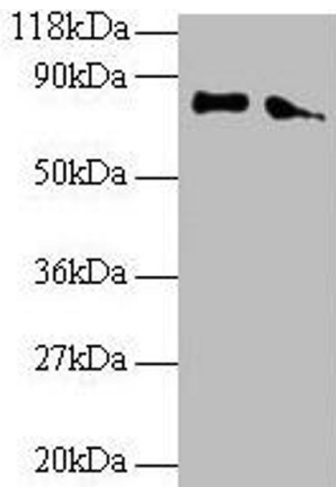
Storage: -20 °C,-80 °C

Storage Comment: Upon receipt, store at -20°C or -80°C. Avoid repeated freeze.



Immunohistochemistry

Image 1. Immunohistochemistry of paraffin-embedded human liver tissue using ABIN7151681 at dilution of 1:100



Western Blotting

Image 2. Western blot All lanes: ERP29 antibody at 2 μ g/mL
Lane 1: EC109 whole cell lysate Lane 2: 293T whole cell lysate
Secondary Goat polyclonal to rabbit IgG at 1/15000 dilution
Predicted band size: 29, 6 kDa Observed band size: 80 kDa