



[Go to Product page](#)

Datasheet for ABIN7151689
anti-ERGIC1 antibody (AA 48-254)

3 Images

Overview

Quantity:	100 µg
Target:	ERGIC1
Binding Specificity:	AA 48-254
Reactivity:	Human
Host:	Rabbit
Clonality:	Polyclonal
Conjugate:	This ERGIC1 antibody is un-conjugated
Application:	ELISA, Western Blotting (WB), Immunohistochemistry (IHC), Immunofluorescence (IF)

Product Details

Immunogen:	Recombinant Human Endoplasmic reticulum-Golgi intermediate compartment protein 1 protein (48-254AA)
Isotype:	IgG
Cross-Reactivity:	Human
Purification:	>95%, Protein G purified

Target Details

Target:	ERGIC1
Alternative Name:	ERGIC1 (ERGIC1 Products)
Background:	Background: Possible role in transport between endoplasmic reticulum and Golgi.

Target Details

Aliases: endoplasmic reticulum-golgi intermediate compartment 32 kDa protein antibody, Endoplasmic reticulum-Golgi intermediate compartment protein 1 antibody, ER-Golgi intermediate compartment 32 kDa protein antibody, ERG11_HUMAN antibody, ERGIC-32 antibody, ergic1 antibody, ERGIC32 antibody, KIAA1181 antibody, NET24 antibody

UniProt: [Q969X5](#)

Pathways: [SARS-CoV-2 Protein Interactome](#)

Application Details

Application Notes: Recommended dilution: WB:1:500-1:2000, IHC:1:20-1:200, IF:1:50-1:200,

Restrictions: For Research Use only

Handling

Format: Liquid

Buffer: Preservative: 0.03 % Proclin 300
Constituents: 50 % Glycerol, 0.01M PBS, PH 7.4

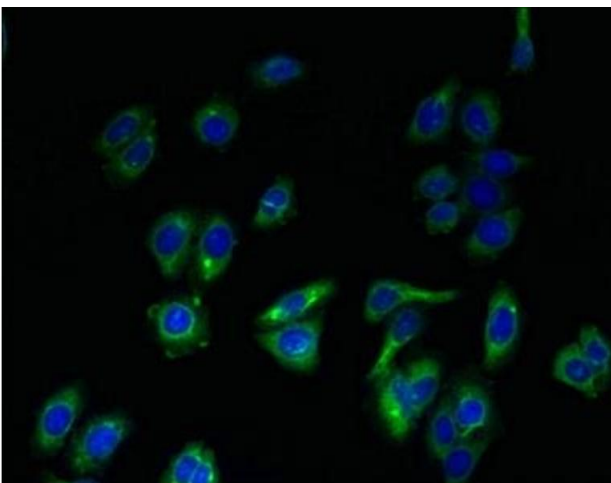
Preservative: ProClin

Precaution of Use: This product contains ProClin: a POISONOUS AND HAZARDOUS SUBSTANCE which should be handled by trained staff only.

Storage: -20 °C,-80 °C

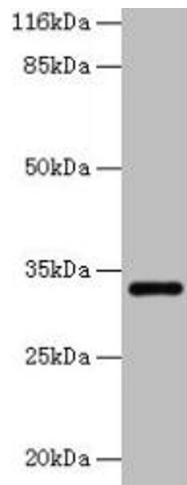
Storage Comment: Upon receipt, store at -20°C or -80°C. Avoid repeated freeze.

Images



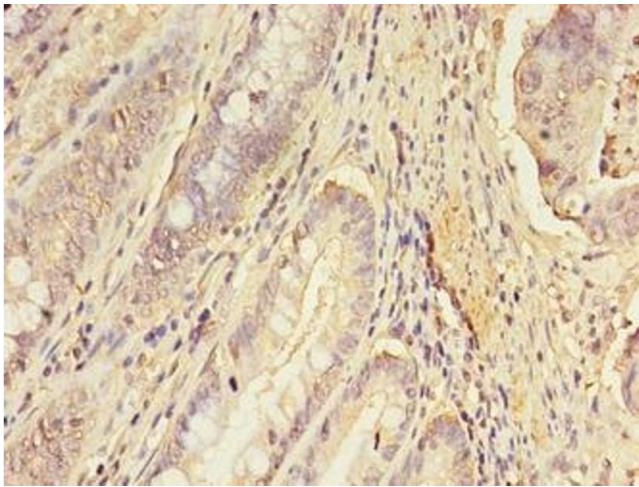
Immunofluorescence

Image 1. Immunofluorescent analysis of HepG2 cells using ABIN7151689 at dilution of 1:100 and Alexa Fluor 488-conjugated AffiniPure Goat Anti-Rabbit IgG(H+L)



Western Blotting

Image 2. Western blot All lanes: ERGIC1 antibody at 2 μ g/mL + HepG2 whole cell lysate Secondary Goat polyclonal to rabbit IgG at 1/10000 dilution Predicted band size: 33, 23, 18 kDa Observed band size: 33 kDa



Immunohistochemistry

Image 3. Immunohistochemistry of paraffin-embedded human colon cancer using ABIN7151689 at dilution of 1:100