



[Go to Product page](#)

Datasheet for ABIN7151711
anti-LACTB2 antibody (AA 6-288)

3 Images

Overview

Quantity:	100 µg
Target:	LACTB2
Binding Specificity:	AA 6-288
Reactivity:	Human
Host:	Rabbit
Clonality:	Polyclonal
Conjugate:	This LACTB2 antibody is un-conjugated
Application:	ELISA, Immunohistochemistry (IHC), Immunofluorescence (IF)

Product Details

Immunogen:	Recombinant Human Endoribonuclease LACTB2 protein (6-288AA)
Isotype:	IgG
Cross-Reactivity:	Human
Purification:	>95%, Protein G purified

Target Details

Target:	LACTB2
Alternative Name:	LACTB2 (LACTB2 Products)
Background:	Background: Endoribonuclease, cleaves preferentially 3' to purine-pyrimidine dinucleotide motifs in single-stranded RNA. The cleavage product contains a free 3'-OH group. Has no

Target Details

activity with double-stranded RNA or DNA. Required for normal mitochondrial function and cell viability.

Aliases: Beta lactamase like protein 2 antibody, Beta-lactamase-like protein 2 antibody, CGI 83 antibody, CGI-83 antibody, LACB2_HUMAN antibody, Lactamase beta 2 antibody, LACTB2 antibody, MGC112672 antibody, MGC140671 antibody, MGC7674 antibody, OTTHUMP00000226691 antibody, OTTHUMP00000226692 antibody

UniProt: [Q53H82](#)

Application Details

Application Notes: Recommended dilution: IHC:1:20-1:200, IF:1:50-1:200,

Restrictions: For Research Use only

Handling

Format: Liquid

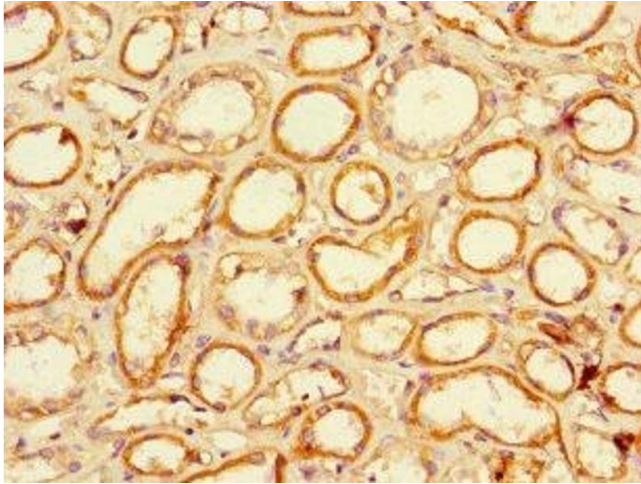
Buffer: Preservative: 0.03 % Proclin 300
Constituents: 50 % Glycerol, 0.01M PBS, PH 7.4

Preservative: ProClin

Precaution of Use: This product contains ProClin: a POISONOUS AND HAZARDOUS SUBSTANCE which should be handled by trained staff only.

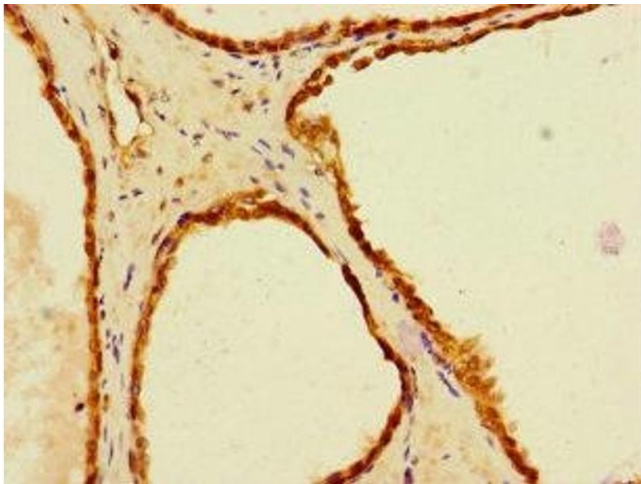
Storage: -20 °C,-80 °C

Storage Comment: Upon receipt, store at -20°C or -80°C. Avoid repeated freeze.



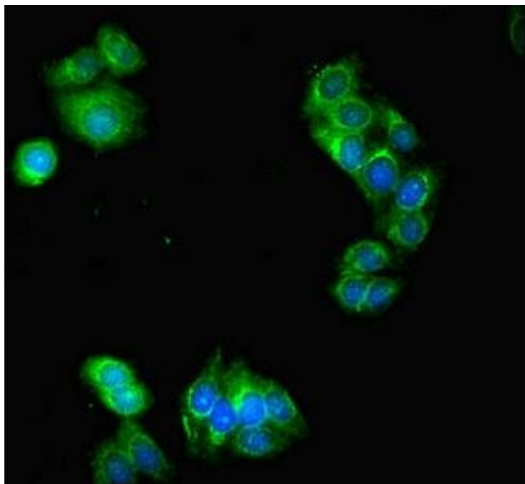
Immunohistochemistry

Image 1. Immunohistochemistry of paraffin-embedded human kidney tissue using ABIN7151711 at dilution of 1:100



Immunohistochemistry

Image 2. Immunohistochemistry of paraffin-embedded human prostate cancer using ABIN7151711 at dilution of 1:100



Immunofluorescence

Image 3. Immunofluorescent analysis of HepG2 cells using ABIN7151711 at dilution of 1:100 and Alexa Fluor 488-conjugated AffiniPure Goat Anti-Rabbit IgG(H+L)