



[Go to Product page](#)

Datasheet for ABIN7151743
anti-LIPG antibody (AA 360-500)

3 Images

Overview

Quantity:	100 µg
Target:	LIPG
Binding Specificity:	AA 360-500
Reactivity:	Human
Host:	Rabbit
Clonality:	Polyclonal
Conjugate:	This LIPG antibody is un-conjugated
Application:	Immunohistochemistry (IHC), Immunofluorescence (IF), Immunoprecipitation (IP), ELISA

Product Details

Immunogen:	Recombinant Human Endothelial lipase protein (360-500AA)
Isotype:	IgG
Cross-Reactivity:	Human
Purification:	>95%, Protein G purified

Target Details

Target:	LIPG
Alternative Name:	LIPG (LIPG Products)
Background:	Background: Has phospholipase and triglyceride lipase activities. Hydrolyzes high density lipoproteins (HDL) more efficiently than other lipoproteins. Binds heparin.

Target Details

Aliases: EDL antibody, EL antibody, Endothelial cell-derived lipase antibody, Endothelial lipase antibody, Endothelial lipase precursor antibody, Lipase endothelial antibody, LIPE_HUMAN antibody, LIPG antibody, Lipoprotein lipase H antibody, PRO719 antibody

UniProt: [Q9Y5X9](#)

Application Details

Application Notes: Recommended dilution: IHC:1:20-1:200, IF:1:50-1:200, IP:1:200-1:2000,

Restrictions: For Research Use only

Handling

Format: Liquid

Buffer: Preservative: 0.03 % Proclin 300
Constituents: 50 % Glycerol, 0.01M PBS, PH 7.4

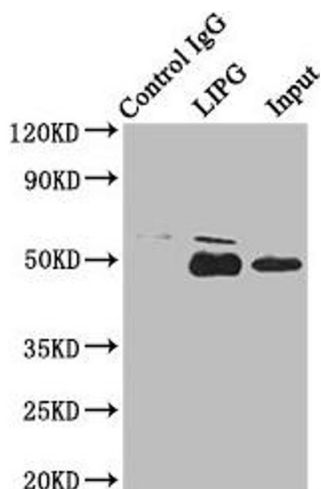
Preservative: ProClin

Precaution of Use: This product contains ProClin: a POISONOUS AND HAZARDOUS SUBSTANCE which should be handled by trained staff only.

Storage: -20 °C,-80 °C

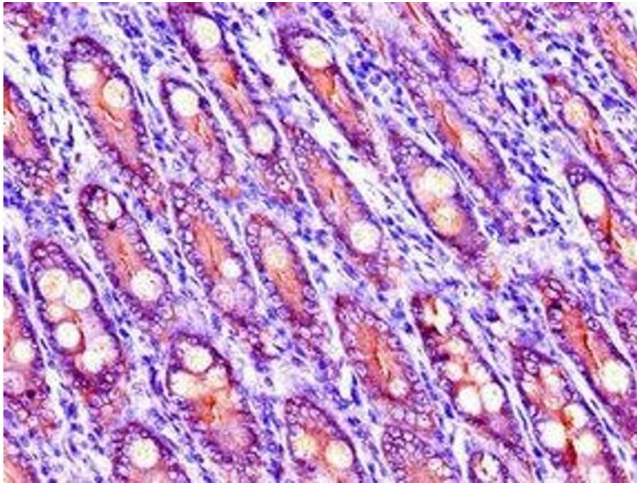
Storage Comment: Upon receipt, store at -20°C or -80°C. Avoid repeated freeze.

Images



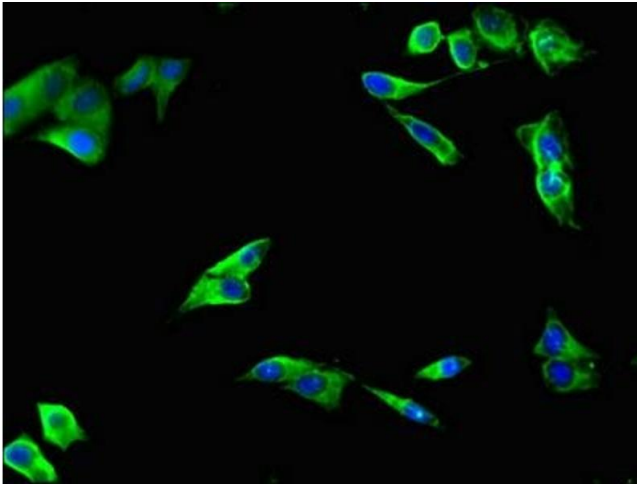
Western Blotting

Image 1. Immunoprecipitating LIPG in HepG2 whole cell lysate Lane 1: Rabbit control IgG instead of ABIN7151743 in HepG2 whole cell lysate. For western blotting, a HRP-conjugated Protein G antibody was used as the secondary antibody (1/2000) Lane 2: ABIN7151743 (8 µg) + HepG2 whole cell lysate (500 µg) Lane 3: HepG2 whole cell lysate (10 µg)



Immunohistochemistry

Image 2. Immunohistochemistry of paraffin-embedded human small intestine tissue using ABIN7151743 at dilution of 1:100



Immunofluorescence

Image 3. Immunofluorescent analysis of HeLa cells using ABIN7151743 at dilution of 1:100 and Alexa Fluor 488-conjugated AffiniPure Goat Anti-Rabbit IgG(H+L)