

Datasheet for ABIN7151798  
**anti-ENO2/NSE antibody**



[Go to Product page](#)

3 Images

## Overview

Quantity:	100 µg
Target:	ENO2/NSE (ENO2)
Reactivity:	Human
Host:	Mouse
Clonality:	Monoclonal
Conjugate:	This ENO2/NSE antibody is un-conjugated
Application:	Western Blotting (WB), Immunohistochemistry (IHC), ELISA

## Product Details

Immunogen:	Recombinant Human ENO2
Clone:	4B1F5
Isotype:	IgG2a
Cross-Reactivity:	Human, Mouse
Purification:	Protein G purified

## Target Details

Target:	ENO2/NSE (ENO2)
Alternative Name:	ENO2 ( <a href="#">ENO2 Products</a> )
Background:	Background: Has neurotrophic and neuroprotective properties on a broad spectrum of central nervous system (CNS) neurons. Binds, in a calcium-dependent manner, to cultured neocortical

## Target Details

neurons and promotes cell survival

Aliases: 2-phospho-D-glycerate hydro-lyase,Enolase 2,Neural enolase,Neuron-specific enolase,NSE,ENO2

UniProt: [P09104](#)

## Application Details

Application Notes: Recommended dilution:WB:1:500-1:5000,IHC:1:50-1:500,

Restrictions: For Research Use only

## Handling

Format: Liquid

Buffer: Preservative: 0.03 % Proclin 300  
Constituents: 50 % Glycerol, 0.01M PBS, PH 7.4

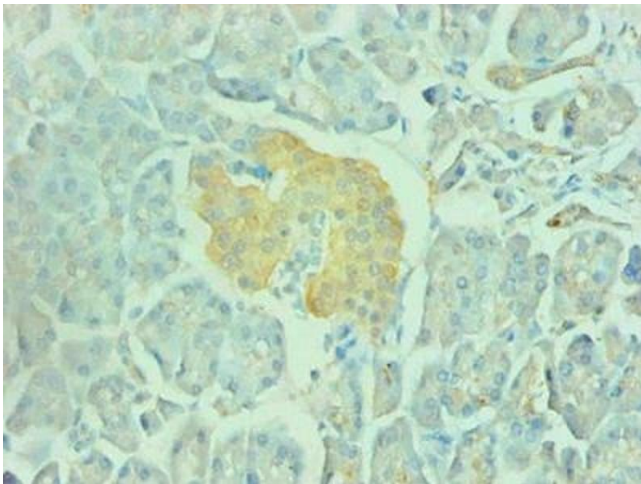
Preservative: ProClin

Precaution of Use: This product contains ProClin: a POISONOUS AND HAZARDOUS SUBSTANCE which should be handled by trained staff only.

Storage: -20 °C,-80 °C

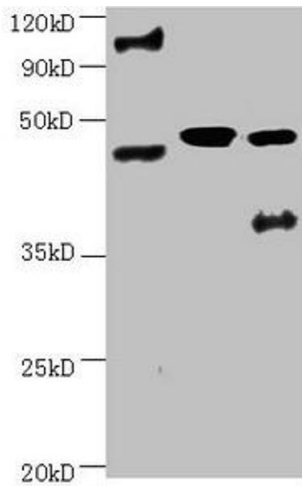
Storage Comment: Upon receipt, store at -20°C or -80°C. Avoid repeated freeze.

## Images



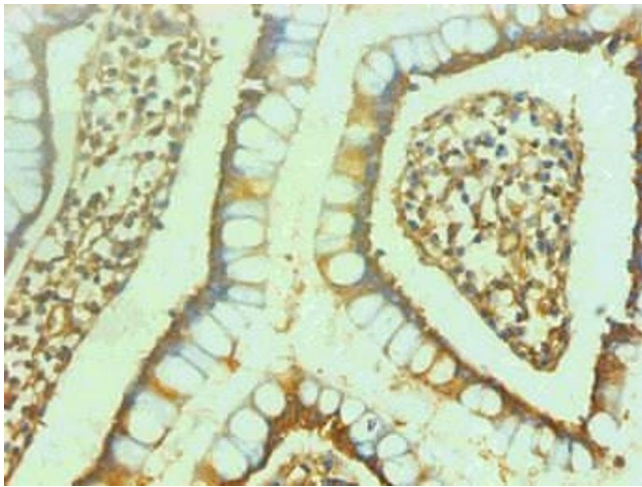
### Immunohistochemistry

**Image 1.** Immunohistochemical of paraffin-embedded human pancreas using ABIN7151798 at dilution of 1:200



### Western Blotting

**Image 2.** All lanes: Mouse anti-human ENO2 monoclonal antibody at 1 µg/mL Lane 1: Hela cell lysate Lane 2: Recombinant Human Gamma-enolase(ENO2) at 10 µg Lane 3: U251 cell lysate Secondary Goat polyclonal to Mouse IgG at 1/3000 dilution Predicted band size : 43,48 kD Observed band size: 48 kD Additional bands at : 100 kDa.



### Immunohistochemistry

**Image 3.** Immunohistochemical of paraffin-embedded human small intestine using ABIN7151798 at dilution of 1:200