

Datasheet for ABIN7151831
anti-EPHA1 antibody (AA 242-564)[Go to Product page](#)

1 Image

Overview

Quantity:	100 µL
Target:	EPHA1
Binding Specificity:	AA 242-564
Reactivity:	Human
Host:	Rabbit
Clonality:	Polyclonal
Conjugate:	This EPHA1 antibody is un-conjugated
Application:	ELISA, Immunofluorescence (IF)

Product Details

Immunogen:	Recombinant Human Ephrin type-A receptor 10 protein (242-564aa)
Isotype:	IgG
Cross-Reactivity:	Human
Purification:	>95%, Protein G purified

Target Details

Target:	EPHA1
Alternative Name:	EPHA1 (EPHA1 Products)
Background:	Background: Receptor for members of the ephrin-A family. Binds to EFNA3, EFNA4 and EFNA5. Aliases: Ephrin type-A receptor 10 (EC 2.7.10.1), EPHA10

Target Details

UniProt: [Q5JZY3](#)

Application Details

Application Notes: Recommended dilution: IF:1:100-1:500,

Restrictions: For Research Use only

Handling

Format: Liquid

Buffer: Preservative: 0.03 % Proclin 300
Constituents: 50 % Glycerol, 0.01M PBS, pH 7.4

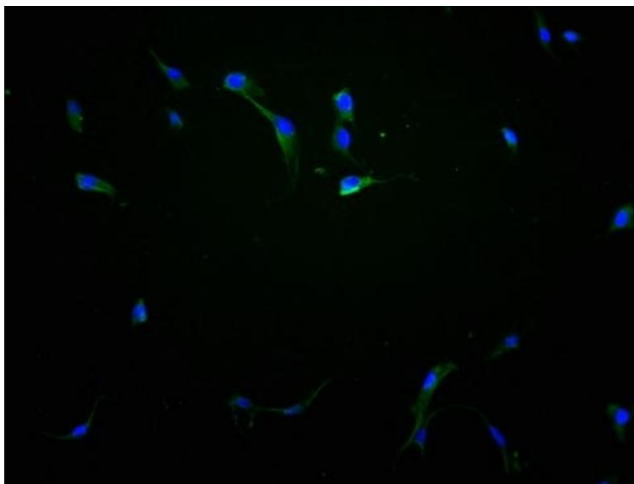
Preservative: ProClin

Precaution of Use: This product contains ProClin: a POISONOUS AND HAZARDOUS SUBSTANCE which should be handled by trained staff only.

Storage: -20 °C,-80 °C

Storage Comment: Upon receipt, store at -20°C or -80°C. Avoid repeated freeze.

Images



Immunofluorescence

Image 1. Immunofluorescence staining of NIH/3T3 cells with ABIN7151831 at 1:100, counter-stained with DAPI. The cells were fixed in 4 % formaldehyde and blocked in 10 % normal Goat Serum. The cells were then incubated with the antibody overnight at 4 °C. The secondary antibody was Alexa Fluor 488-conjugated AffiniPure Goat Anti-Rabbit IgG(H+L).