

Datasheet for ABIN7151860

anti-EPH Receptor B2 antibody (AA 261-465)[Go to Product page](#)**2** Images

Overview

Quantity:	100 µg
Target:	EPH Receptor B2 (EPHB2)
Binding Specificity:	AA 261-465
Reactivity:	Human
Host:	Rabbit
Clonality:	Polyclonal
Application:	ELISA, Immunohistochemistry (IHC), Immunofluorescence (IF)

Product Details

Immunogen:	Recombinant Human Ephrin type-B receptor 2 protein (261-465AA)
Isotype:	IgG
Cross-Reactivity:	Human
Purification:	>95%, Protein G purified

Target Details

Target:	EPH Receptor B2 (EPHB2)
Alternative Name:	EPHB2 (EPHB2 Products)
Background:	Background: Receptor tyrosine kinase which binds promiscuously transmembrane ephrin-B family ligands residing on adjacent cells, leading to contact-dependent bidirectional signaling into neighboring cells. The signaling pathway downstream of the receptor is referred to as forward signaling while the signaling pathway downstream of the ephrin ligand is referred to as

Target Details

reverse signaling. Functions in axon guidance during development. Involved in the guidance of commissural axons, that form a major interhemispheric connection between the 2 temporal lobes of the cerebral cortex. Also involved in guidance of contralateral inner ear efferent growth cones at the midline and of retinal ganglion cell axons to the optic disk. In addition to axon guidance, also regulates dendritic spines development and maturation and stimulates the formation of excitatory synapses. Upon activation by EFNB1, abolishes the ARHGEF15-mediated negative regulation on excitatory synapse formation. Controls other aspects of development including angiogenesis, palate development and in inner ear development through regulation of endolymph production. Forward and reverse signaling through the EFNB2/EPHB2 complex regulate movement and adhesion of cells that tubularize the urethra and septate the cloaca. May function as a tumor suppressor.

Aliases: cek5 antibody, Developmentally regulated EPH related tyrosine kinase antibody, DRT antibody, EK5 antibody, ELK related protein tyrosine kinase antibody, Eph receptor B2 antibody, EPH tyrosine kinase 3 antibody, EPH-like kinase 5 antibody, EPHB2 antibody, EPHB2_HUMAN antibody, Ephrin type B receptor 2 antibody, Ephrin type-B receptor 2 antibody, EPHT 3 antibody, ERK antibody, ETECK antibody, hEK5 antibody, Nuk antibody, Prkm 5 antibody, Receptor protein tyrosine kinase HEK 5 antibody, Renal carcinoma antigen NY-REN-47 antibody, Sek 3 antibody, Tyro 5 antibody, Tyrosine protein kinase receptor CEK 5 antibody, Tyrosine protein kinase receptor EPH 3 antibody, Tyrosine protein kinase receptor QEK 5 antibody, Tyrosine-protein kinase receptor EPH-3 antibody, Tyrosine-protein kinase TYRO5 antibody

UniProt:	P29323
Pathways:	RTK Signaling , Regulation of long-term Neuronal Synaptic Plasticity , S100 Proteins

Application Details

Application Notes:	Recommended dilution: IHC:1:20-1:200, IF:1:50-1:200,
Restrictions:	For Research Use only

Handling

Format:	Liquid
Buffer:	Preservative: 0.03 % Proclin 300 Constituents: 50 % Glycerol, 0.01M PBS, PH 7.4
Preservative:	ProClin
Precaution of Use:	This product contains ProClin: a POISONOUS AND HAZARDOUS SUBSTANCE which should be

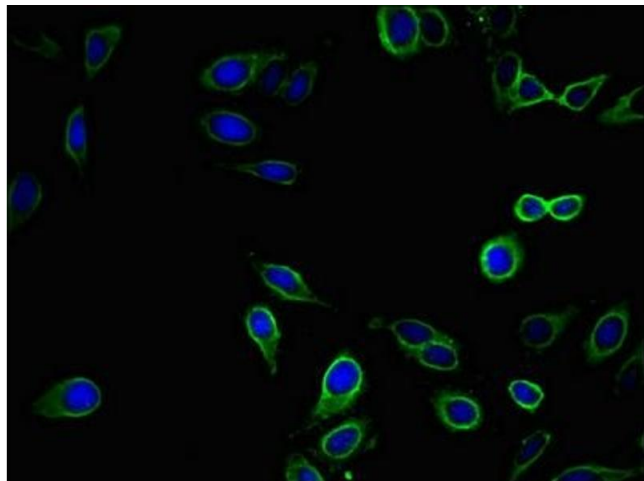
Handling

handled by trained staff only.

Storage: -20 °C, -80 °C

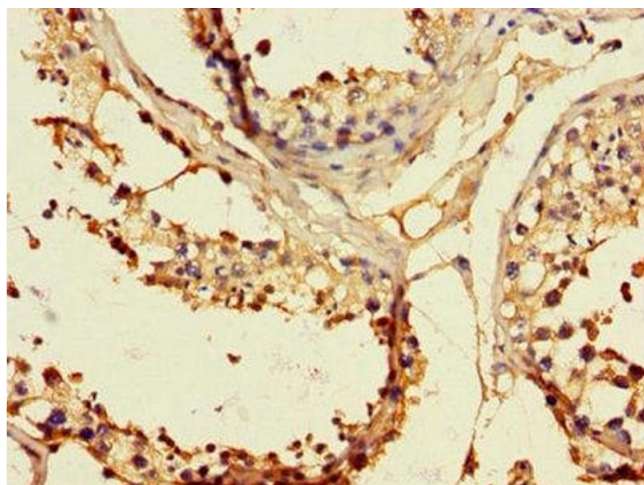
Storage Comment: Upon receipt, store at -20°C or -80°C. Avoid repeated freeze.

Images



Immunofluorescence

Image 1. Immunofluorescent analysis of HeLa cells using ABIN7151860 at dilution of 1:100 and Alexa Fluor 488-conjugated AffiniPure Goat Anti-Rabbit IgG(H+L)



Immunohistochemistry

Image 2. Immunohistochemistry of paraffin-embedded human testis tissue using ABIN7151860 at dilution of 1:100