



[Go to Product page](#)

Datasheet for ABIN7151868

anti-EPH Receptor B4 antibody (AA 300-540)

3 Images

Overview

Quantity:	100 µL
Target:	EPH Receptor B4 (EPHB4)
Binding Specificity:	AA 300-540
Reactivity:	Human
Host:	Rabbit
Clonality:	Polyclonal
Conjugate:	This EPH Receptor B4 antibody is un-conjugated
Application:	Western Blotting (WB), ELISA, Immunohistochemistry (IHC)

Product Details

Immunogen:	Recombinant Human Ephrin type-B receptor 4 protein (300-540AA)
Isotype:	IgG
Cross-Reactivity:	Human
Purification:	Antigen Affinity Purified

Target Details

Target:	EPH Receptor B4 (EPHB4)
Alternative Name:	EPHB4 (EPHB4 Products)
Background:	Background: Receptor tyrosine kinase which binds promiscuously transmembrane ephrin-B family ligands residing on adjacent cells, leading to contact-dependent bidirectional signaling

Target Details

into neighboring cells. The signaling pathway downstream of the receptor is referred to as forward signaling while the signaling pathway downstream of the ephrin ligand is referred to as reverse signaling. Together with its cognate ligand/functional ligand EFNB2 plays a central role in heart morphogenesis and angiogenesis through regulation of cell adhesion and cell migration. EPHB4-mediated forward signaling controls cellular repulsion and segregation from EFNB2-expressing cells. Plays also a role in postnatal blood vessel remodeling, morphogenesis and permeability and is thus important in the context of tumor angiogenesis.

Aliases: Ephb4 antibody, EPHB4_HUMAN antibody, Ephrin receptor EphB4 antibody, Ephrin type-B receptor 4 antibody, Hepatoma Transmembrane Kinase antibody, HTK antibody, MYK 1 antibody, MYK1 antibody, TYRO 11 antibody, TYRO11 antibody, Tyrosine-protein kinase receptor HTK antibody, Tyrosine-protein kinase TYRO11 antibody

UniProt: [P54760](#)

Pathways: [RTK Signaling](#)

Application Details

Application Notes: Recommended dilution: WB:1:1000-1:5000, IHC:1:20-1:200,

Restrictions: For Research Use only

Handling

Format: Liquid

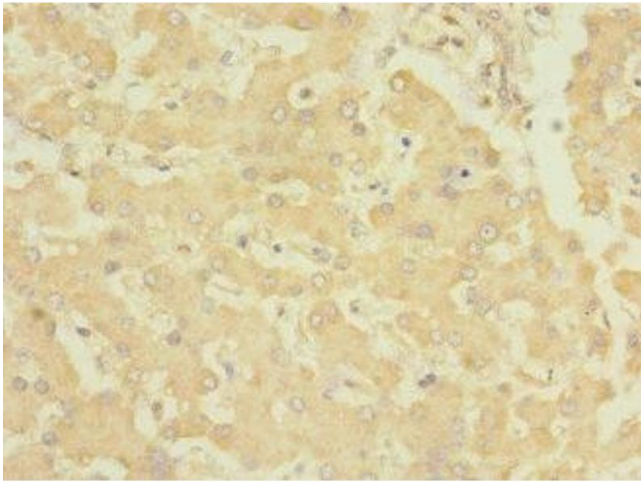
Buffer: PBS with 0.02 % sodium azide, 50 % glycerol, pH 7.3.

Preservative: Sodium azide

Precaution of Use: This product contains Sodium azide: a POISONOUS AND HAZARDOUS SUBSTANCE which should be handled by trained staff only.

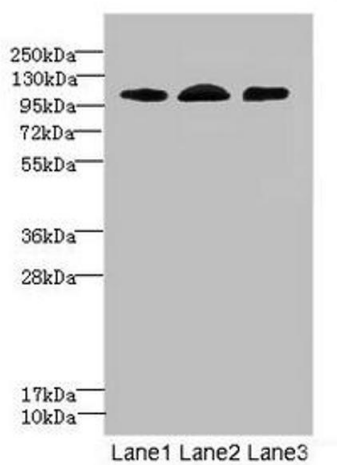
Storage: -20 °C,-80 °C

Storage Comment: Upon receipt, store at -20°C or -80°C. Avoid repeated freeze.



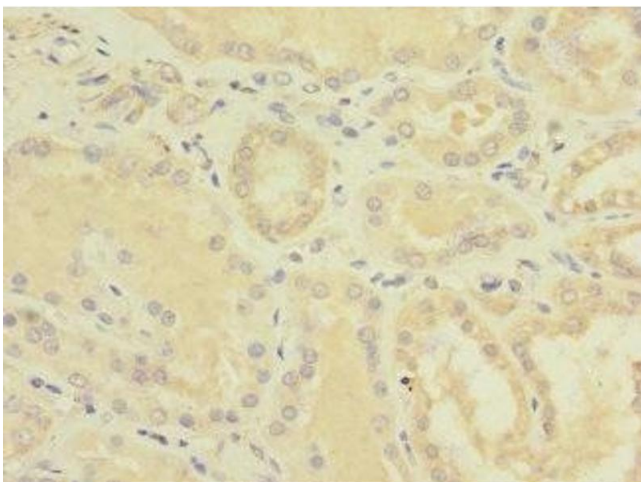
Immunohistochemistry

Image 1. Immunohistochemistry of paraffin-embedded human liver tissue using ABIN7151868 at dilution of 1:100



Western Blotting

Image 2. Western blot All lanes: EPHB4 antibody at 2.71 μ g/mL Lane 1: A549 whole cell lysate Lane 2: 293T whole cell lysate Lane 3: Hela whole cell lysate Secondary Goat polyclonal to rabbit IgG at 1/10000 dilution Predicted band size: 109, 56, 34, 46 kDa Observed band size: 109 kDa



Immunohistochemistry

Image 3. Immunohistochemistry of paraffin-embedded human kidney tissue using ABIN7151868 at dilution of 1:100