



[Go to Product page](#)

Datasheet for ABIN7151874

anti-Ephrin A1 antibody (AA 19-182)

2 Images

Overview

Quantity:	100 µL
Target:	Ephrin A1 (EFNA1)
Binding Specificity:	AA 19-182
Reactivity:	Human
Host:	Rabbit
Clonality:	Polyclonal
Conjugate:	This Ephrin A1 antibody is un-conjugated
Application:	ELISA, Immunohistochemistry (IHC)

Product Details

Immunogen:	Recombinant Human Ephrin-A1 protein (19-182AA)
Isotype:	IgG
Cross-Reactivity:	Human
Purification:	Antigen Affinity Purified

Target Details

Target:	Ephrin A1 (EFNA1)
Alternative Name:	EFNA1 (EFNA1 Products)
Background:	Background: Cell surface GPI-bound ligand for Eph receptors, a family of receptor tyrosine kinases which are crucial for migration, repulsion and adhesion during neuronal, vascular and

Target Details

epithelial development. Binds promiscuously Eph receptors residing on adjacent cells, leading to contact-dependent bidirectional signaling into neighboring cells. Plays an important role in angiogenesis and tumor neovascularization. The recruitment of VAV2, VAV3 and PI3-kinase p85 subunit by phosphorylated EPHA2 is critical for EFNA1-induced RAC1 GTPase activation and vascular endothelial cell migration and assembly. Exerts anti-oncogenic effects in tumor cells through activation and down-regulation of EPHA2. Activates EPHA2 by inducing tyrosine phosphorylation which leads to its internalization and degradation. Acts as a negative regulator in the tumorigenesis of gliomas by down-regulating EPHA2 and FAK. Can evoke collapse of embryonic neuronal growth cone and regulates dendritic spine morphogenesis.

Aliases: B61 antibody, ECKLG antibody, EFL 1 antibody, EFL1 antibody, EFNA 1 antibody, Efna1 antibody, EFNA1_HUMAN antibody, EPH related receptor tyrosine kinase ligand 1 antibody, EPH-related receptor tyrosine kinase ligand 1 antibody, Ephrin-A1 antibody, Ephrin-A1, secreted form antibody, EphrinA1 antibody, EPLG 1 antibody, EPLG1 antibody, Immediate early response protein B61 antibody, LERK 1 antibody, LERK-1 antibody, LERK1 antibody, Ligand of eph related kinase 1 antibody, OTTHUMP00000033242 antibody, OTTHUMP00000033271 antibody, secreted form antibody, TNF alpha-induced protein 4 antibody, TNFAIP 4 antibody, TNFAIP4 antibody, Tumor necrosis factor alpha induced protein 4 antibody, Tumor necrosis factor alpha-induced protein 4 antibody

UniProt: [P20827](#)

Pathways: [RTK Signaling](#)

Application Details

Application Notes: Recommended dilution: IHC:1:20-1:200,

Restrictions: For Research Use only

Handling

Format: Liquid

Buffer: PBS with 0.02 % sodium azide, 50 % glycerol, pH 7.3.

Preservative: Sodium azide

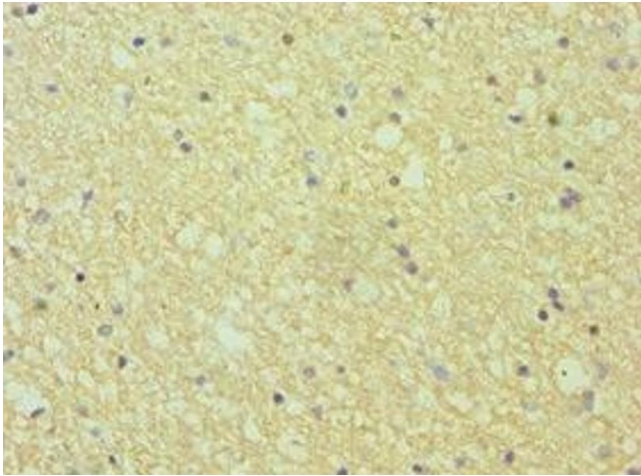
Precaution of Use: This product contains Sodium azide: a POISONOUS AND HAZARDOUS SUBSTANCE which should be handled by trained staff only.

Storage: -20 °C,-80 °C

Handling

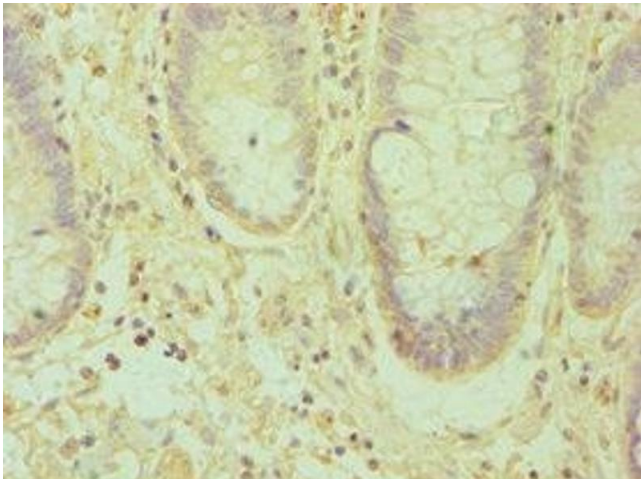
Storage Comment: Upon receipt, store at -20°C or -80°C. Avoid repeated freeze.

Images



Immunohistochemistry

Image 1. Immunohistochemistry of paraffin-embedded human brain tissue using ABIN7151874 at dilution of 1:100



Immunohistochemistry

Image 2. Immunohistochemistry of paraffin-embedded human colon cancer using ABIN7151874 at dilution of 1:100