



[Go to Product page](#)

Datasheet for ABIN7151886
anti-EPS8-Like 2 antibody (AA 201-500)

2 Images

Overview

Quantity:	100 µg
Target:	EPS8-Like 2 (EPS8L2)
Binding Specificity:	AA 201-500
Reactivity:	Human
Host:	Rabbit
Clonality:	Polyclonal
Conjugate:	This EPS8-Like 2 antibody is un-conjugated
Application:	ELISA, Immunohistochemistry (IHC)

Product Details

Immunogen:	Recombinant Human Epidermal growth factor receptor kinase substrate 8-like protein 2 protein (201-500AA)
Isotype:	IgG
Cross-Reactivity:	Human
Purification:	>95%, Protein G purified

Target Details

Target:	EPS8-Like 2 (EPS8L2)
Alternative Name:	EPS8L2 (EPS8L2 Products)
Background:	Background: Stimulates guanine exchange activity of SOS1. May play a role in membrane

Target Details

ruffling and remodeling of the actin cytoskeleton.

Aliases: Epidermal growth factor receptor kinase substrate 8 like protein 2 antibody, Epidermal growth factor receptor kinase substrate 8-like protein 2 antibody, Epidermal growth factor receptor pathway substrate 8 like protein 2 antibody, Epidermal growth factor receptor pathway substrate 8 related protein 2 antibody, Epidermal growth factor receptor pathway substrate 8-related protein 2 antibody, EPS8 like 2 antibody, EPS8 like protein 2 antibody, EPS8 related protein 2 antibody, EPS8-like protein 2 antibody, EPS8-related protein 2 antibody, EPS8L 2 antibody, EPS8L2 antibody, EPS8R 2 antibody, EPS8R2 antibody, ES8L2_HUMAN antibody, FLJ16738 antibody, FLJ21935 antibody, FLJ22171 antibody, MGC126530 antibody, MGC3088 antibody

UniProt: [Q9H6S3](#)

Application Details

Application Notes: Recommended dilution: IHC:1:20-1:200,

Restrictions: For Research Use only

Handling

Format: Liquid

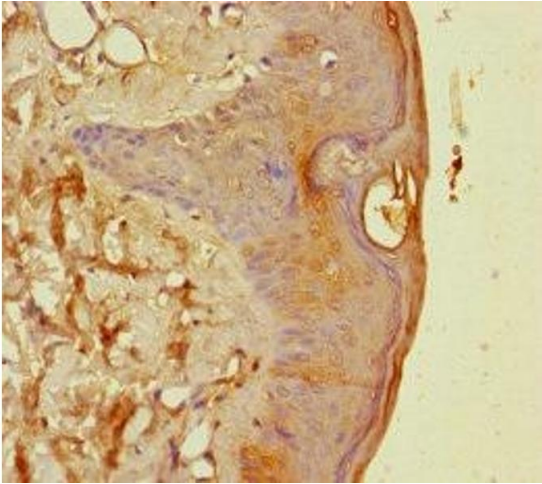
Buffer: Preservative: 0.03 % Proclin 300
Constituents: 50 % Glycerol, 0.01M PBS, PH 7.4

Preservative: ProClin

Precaution of Use: This product contains ProClin: a POISONOUS AND HAZARDOUS SUBSTANCE which should be handled by trained staff only.

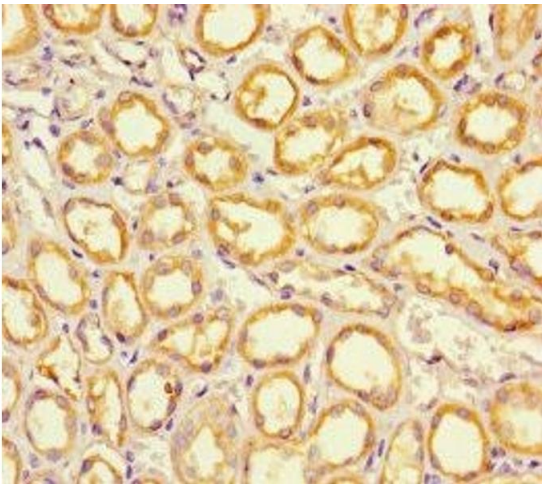
Storage: -20 °C,-80 °C

Storage Comment: Upon receipt, store at -20°C or -80°C. Avoid repeated freeze.



Immunohistochemistry

Image 1. Immunohistochemistry of paraffin-embedded human skin tissue using ABIN7151886 at dilution of 1:100



Immunohistochemistry

Image 2. Immunohistochemistry of paraffin-embedded human kidney tissue using ABIN7151886 at dilution of 1:100