

Datasheet for ABIN7151890
anti-EPS8-Like 3 antibody (AA 367-521)[Go to Product page](#)

2 Images

Overview

Quantity:	100 µg
Target:	EPS8-Like 3 (EPS8L3)
Binding Specificity:	AA 367-521
Reactivity:	Human
Host:	Rabbit
Clonality:	Polyclonal
Conjugate:	This EPS8-Like 3 antibody is un-conjugated
Application:	ELISA, Immunohistochemistry (IHC)

Product Details

Immunogen:	Recombinant Human Epidermal growth factor receptor kinase substrate 8-like protein 3 protein (367-521AA)
Isotype:	IgG
Cross-Reactivity:	Human
Purification:	>95%, Protein G purified

Target Details

Target:	EPS8-Like 3 (EPS8L3)
Alternative Name:	EPS8L3 (EPS8L3 Products)
Background:	EPS8L3 antibody, EPS8R3Epidermal growth factor receptor kinase substrate 8-like protein 3

Target Details

antibody, EPS8-like protein 3 antibody, Epidermal growth factor receptor pathway substrate 8-related protein 3 antibody, EPS8-related protein 3 antibody

UniProt: [Q8TE67](#)

Application Details

Application Notes: Recommended dilution: IHC:1:500-1:1000,

Restrictions: For Research Use only

Handling

Format: Liquid

Buffer: Preservative: 0.03 % Proclin 300
Constituents: 50 % Glycerol, 0.01M PBS, pH 7.4

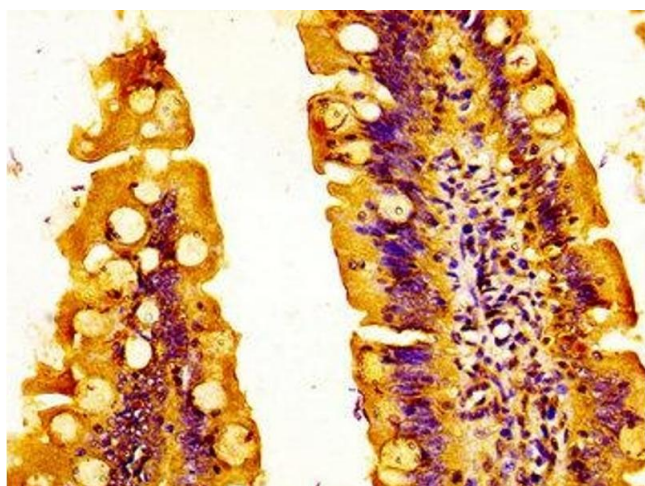
Preservative: ProClin

Precaution of Use: This product contains ProClin: a POISONOUS AND HAZARDOUS SUBSTANCE which should be handled by trained staff only.

Storage: -20 °C,-80 °C

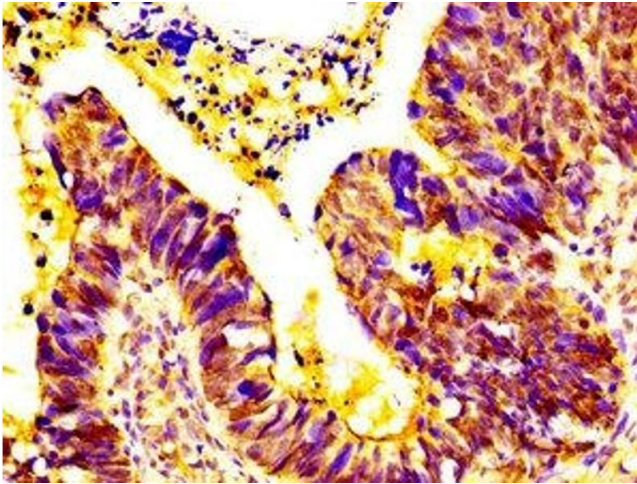
Storage Comment: Upon receipt, store at -20°C or -80°C. Avoid repeated freeze.

Images



Immunohistochemistry

Image 1. IHC image of ABIN7151890 diluted at 1:500 and staining in paraffin-embedded human small intestine tissue performed on a Leica Bond™ system. After dewaxing and hydration, antigen retrieval was mediated by high pressure in a citrate buffer (pH 6.0). Section was blocked with 10% normal goat serum 30min at RT. Then primary antibody (1% BSA) was incubated at 4°C overnight. The primary is detected by a biotinylated secondary antibody and visualized using an HRP conjugated SP system.



Immunohistochemistry

Image 2. IHC image of ABIN7151890 diluted at 1:500 and staining in paraffin-embedded human ovarian cancer performed on a Leica Bond™ system. After dewaxing and hydration, antigen retrieval was mediated by high pressure in a citrate buffer (pH 6.0). Section was blocked with 10% normal goat serum 30min at RT. Then primary antibody (1% BSA) was incubated at 4°C overnight. The primary is detected by a biotinylated secondary antibody and visualized using an HRP conjugated SP system.